



FREEMAN
MARINE EQUIPMENT

ADVANTEC ADVANTAGE



3 YEAR
HASSLE-FREE
WARRANTY

WE ARE PASSIONATE ABOUT DELIVERING

RELIABLE *SOLUTIONS*
SUPERIOR *QUALITY*
WORLD-CLASS *SUPPORT*

FREEMAN CAST HATCHES

**2400
SERIES**



Proudly part of the AdvanTec family of brands



WWW.ADVANTECMARINE.COM

ADVANTEC ADVANTAGE



3 YEAR
HASSLE-FREE
WARRANTY

WE ARE PASSIONATE ABOUT DELIVERING

RELIABLE **SOLUTIONS**
SUPERIOR **QUALITY**
WORLD-CLASS **SUPPORT**

OPENING THE FUTURE TO SECURITY AT SEA

CRAFTSMAN TRAINING AND CERTIFICATION

Freeman Marine craftsmen participate regularly in training and certification programs to gain new skills, update capabilities and certify compliance with industry standards for design, machining, welding, fabrication, painting and other specialized skills. Our goal is to constantly improve not only its products but also the quality of life and work of its valued employees.

ACCEPTANCE GIVEN TO 2400 CAST HATCHES ON CASE BY CASE APPROVALS:

- DNV - Det Norske Veritas
- BV - Bureau Veritas
- MCA - Maritime Coastguard Agency
- USCG - US Coast Guard
- CCG - Canadian Coast Guard (Transport Canada)
- RS - Russian Maritime Register of shipping
- RINA - RINA S.P.A., Italy
- CRS - Croatian Registry of Shipping
- USCG - US Coast Guard
- CCG - Canadian Coast Guard (Transport Canada)
- ABYC - American Boat & Yacht Council

ADVANTEC MANUFACTURING USA - FACTORY APPROVALS

CERTIFICATE OF MANUFACTURING ASSESSMENT
BV MODE II | ISO 9001:2015



FREEMAN CAST HATCH TYPE APPROVALS

2400 Series Watertight Hatches: Cert # 23-2417921-PDA
2400 Series Watertight Hatches: Cert # LR23366654TA



Lloyd's
Register



• USCG - US Coast Guard, CE, ISO-12216 Compliant

✓ **Buy America Act Compliant** (52.225-1)

OUR WARRANTY

All Non-Powered Equipment:

- Platinum Warranty - 3 years from date of shipment

All Powered Equipment:

- Standard Warranty - 2 years from date of shipment
- 1 year extension - Onsite commissioning required by AdvanTec Marine or certified technician

Scan for more information



TABLE OF CONTENTS

2400 CAST HATCHES

ABOUT FREEMAN HATCHES & FEATURES	4
SEALING METHOD	6
HOW TO MEASURE HATCH SIZE	7

HATCH SIZES

OVAL HATCHES	8
ROUND HATCHES	10
RECTANGUL HATCHES	14
SQUARE HATCHES	16
DUCTILE IRON	18

OPTIONS

FLAT TOPS	20
CUSTOMIZATIONS	22
HANDLES	23
HINGES	24
HOLD OPENS	25
NON-SKID	26

QUICK-SHIP PRODUCTS 27

DOORS	28
HATCHES	32

DISTRIBUTORS 33

CAST ALUMINUM CLOSURES 34

CONSOLE DOORS	35
MISCELANIOUS CAST ITEMS	35

FREEMAN CAST HATCHES

2400 SERIES

FREEMAN brand hatches have more quick-acting flush hatch models and features than any manufacturer.

AdvanTec Marine's Freeman hatches are used on a wide variety of fishing boats, tugs, barges, research vessels, offshore tenders, rescue craft and other workboats. The Freeman hatch is designed for new boats, or replacing other hatches in standard openings, or for improving existing craft.

The hatches are fast acting and easy to use. Simply grasp the handle and pull, the shaft slides into place, and with less than a quarter turn, completely disengages the locking mechanism. The dogs and linked handle do the work smoothly in just a second.

Our easy lift system allows simple removal. With the locking mechanism disengaged, the hatch is resting on the deck ring and can be lifted out with one hand.

Freeman Cast Hatch Standard Features:

- Evenly spaced dogging arms exert uniform force on the cover plate. (Either 3, 4, or 8 dogs depending on size of hatches)
- Handle position shows when dogging arms are engaged or disengaged.
- Handle is always attached. Hatch and handle fit flush with the deck with the handle in a recessed locked position.
- Watertight hatches, designed to seal up to 30' intermittent head, the double-sealing gasket seals tighter under pressure.
- Versatile installation, hatches can be installed in steel, aluminum, wood, or fiberglass decks.
- Complete units include aluminum or steel mounting rings for bolt-in or weld-in installations.
- Dogging mechanism assures smooth consistent action; no binding or jamming.
- Quick-acting dogging eliminates over or under tightening; hatch operates the same each time.

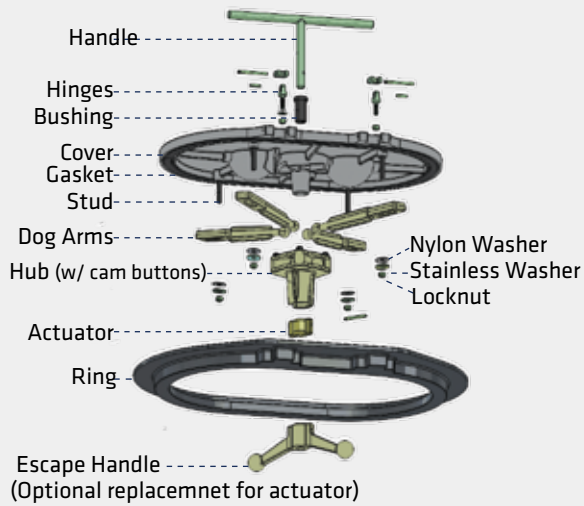
STANDARD FEATURES

- Built in T-Handle
- Knife-edge or Compression Seal
- Quick-Acting
- Easy Operating Dogging Mechanism
- Lift-Out or Hinged Style
- Aluminum, Steel or Stainless Steel Rings
- Double Acting Hinges Open 180°

UDGRADED FEATURES

- Yoke or Raised Hinges
- Flat Top
- Removable Exterior Handles
- Raised Coaming
- Vertical Mount
- Hold Open Options
- Inside Escape Handle Options
- Painted Awlcraft 2000 finish

TYPICAL HATCH ASSEMBLY



2400 SERIES

• **LIFT OUT**
15x24 Oval,
Aluminum Ring

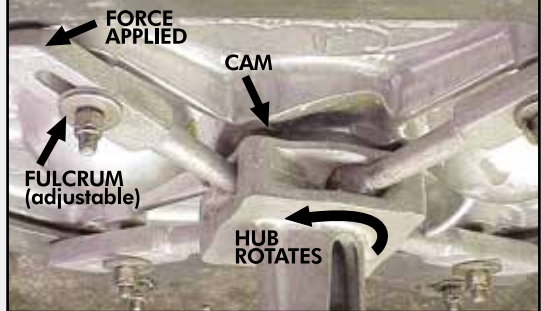


• **HINGED**
18x24 Rectangle,
Aluminum Ring



FREEMAN DOGGING MECHANISM

Cam at center of rotating mechanism exponentially increases force through fulcrum at the opposite end of the dog arm.



EACH DOG CAN BE INDIVIDUALLY ADJUSTED



Evenly spaced dogging arms (either 3, 4 or 8 depending on size of hatch) exert uniform sealing pressure on the cover plate. The unique design, fit, and adjustability of Freeman's dogging mechanism assure smooth, consistent action; no binding or jamming of parts.



HINGED HATCHES

For hinged models, the unique hinging device allows the hatch to be opened 180° and "floats" when the hatch is closed to facilitate a tighter seal. Round hatches 18" and larger, and all oval and square hatches with aluminum covers are available hinged from the factory.

COMPRESSION vs. KNIFE EDGE

COMPRESSION SEAL

ROUND & OVAL HATCHES

ALUMINUM RING



A-C



S-C

STEEL & STAINLESS RINGS



Compression Seal 2400 Series Hatches

These hatches have easy-to-clean spigots, feature long gasket life, and are economical to purchase.

- Aluminum Deck Rings are intended to be weld installed into aluminum decks and bolt installed into other deck materials.
- Steel Deck Rings are to be weld installed into steel decks only.
- Watertight seal to 30 foot intermittent head, continuous 10 foot head top-loaded pressure (on properly installed and adjusted hatch assemblies).



The Freeman Marine 2400 series hatches provided us with watertight and secure deck storage, where we could store our gear and supplies without worrying about leaks or damage.

-Michelle and Leah
F/V No Limits

KNIFE EDGE SEAL

SQUARE, RECTANGLE, OVAL & ROUND

ALUMINUM RING



A-K



S-K

STEEL & STAINLESS RINGS

Knife-edge Seal 2400 Series Hatches

These hatches feature a coaming with drain gutter and an aggressive sealing rim edge. A drain fitting can be installed to minimize water from entering enclosure when hatch is initially opened.

- Aluminum Deck Rings are intended to be weld installed into aluminum decks and bolt installed into other deck materials.
- Steel Deck Rings are to be weld installed into steel decks only.

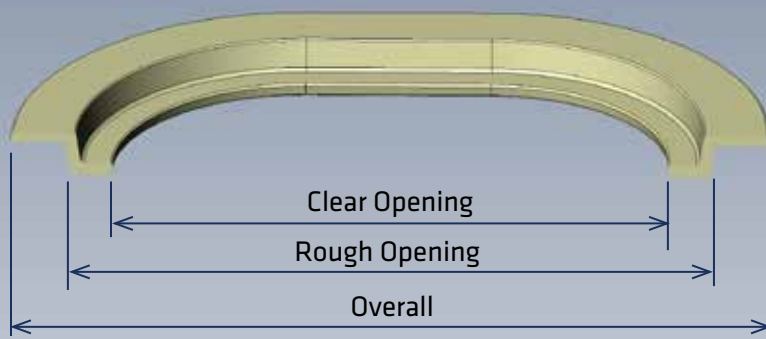
HOW TO MEASURE HATCHES

FREEMAN 2400 SERIES HATCHES

Hatches are identified by their shape and clear opening size. To determine cast hatch size, measure the clear opening of the ring (coaming), which is the smallest dimension of the hole as shown in these examples.

NOTES

OVAL

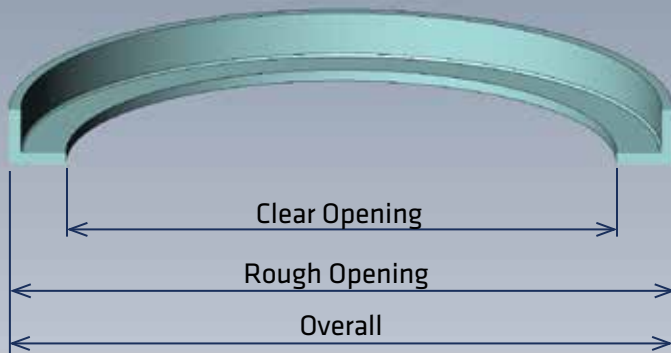


Oval Hatches

Measure the distance of the hole at the narrow and wide points. 2 dimension needed.

*Example (left) shown with aluminum ring, compression seal

ROUND

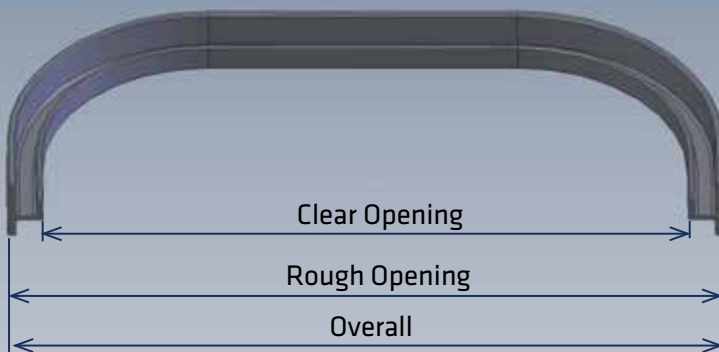


Round Hatches

Measure the diameter of the hole at the center point. Only 1 dimension needed.

*Example (left) shown with steel ring, compression seal

SQUARE / RECTANGLE



Square & Rectangle Hatches

Square - Measure the distance of the hole at the narrowest point. 1 dimension needed.

Rectangle - Measure the distance of the hole at the narrow and wide points. 2 dimension needed.

*Example (left) shown with stainless steel ring, knife edge seal

*Drawings are available from AdvanTecMarine.com or contact any sales representative

HATCH SIZES

2400 Series CAST HATCHES



Oval Hatches

Lift-Out, Aluminum Ring



Lift-Out, Steel Ring



LIFT-OUT COMPRESSION SEAL

Part No	Style	Ring	Clear (in) TOL +.20/-0	Clear (mm) TOL +5.1/-0	Rough (in)	Rough (mm)	Overall (cover+ring) (in)	Overall (cover+ring) (mm)	lbs	kg
2431-0002	Lift-Out	A-C	12.0 x 18.0	304.7 x 457.1	15.2 x 21.2	386.7 x 539.1	18.6 x 24.6	472.5 x 624.9	28	14
2431-0003	Lift-Out	S-C	12.0 x 18.0	304.7 x 457.1	15.1 x 21.1	382.1 x 534.5	15.1 x 21.1	382.1 x 534.5	35	16
2431-0005	Lift-Out	S-C	12.0 x 18.0	304.7 x 457.1	15.1 x 21.1	382.1 x 534.5	15.1 x 21.1	382.1 x 534.5	35	16
2433-0002	Lift-Out	A-C	15.0 x 24.0	381.0 x 609.6	17.7 x 26.7	450.0 x 677.0	21.3 x 30.2	542.0 x 768	35	16
2433-0003	Lift-Out	S-C	15.0 x 24.0	381.0 x 610.0	17.5 x 26.5	445.0 x 673.0	17.5 x 26.5	445.0 x 673.0	37	17
2433-0005	Lift-Out	S-C	15.0 x 24.0	381.0 x 610.0	17.5 x 26.5	445.0 x 673.0	17.5 x 26.5	445.0 x 673.0	37	17

LIFT-OUT KNIFE EDGE SEAL

Part No	Style	Ring	Clear (in) TOL +.20/-0	Clear (mm) TOL +5.1/-0	Rough (in)	Rough (mm)	Overall (cover+ring) (in)	Overall (cover+ring) (mm)	lbs	kg
2434-0002	Lift-Out	A-K	15.0 x 24.0	381.0 x 610.0	17.9 x 26.9	455.2 x 683.8	21.4 x 30.4	544.0 x 773.0	36	16
2434-0003	Lift-Out	S-K	15.0 x 24.0	381.0 x 610.0	17.9 x 26.7	454.0 x 678.0	18.1 x 26.9	460.0 x 684.0	49	22
2434-0005	Lift-Out	S-K	15.0 x 24.0	381.0 x 610.0	17.9 x 26.7	454.0 x 678.0	18.1 x 26.9	460.0 x 684.0	49	22
2435-0002	Lift-Out	A-K	19.0 x 26.0	483.0 x 660.0	21.9 x 28.9	557.0 x 734.0	25.2 x 32.2	641.0 x 819.0	47	23
2435-0003	Lift-Out	S-K	19.0 x 26.0	483.0 x 660.0	21.7 x 28.7	551.0 x 729.0	24.7 x 28.7	551.0 x 729.0	56	25
2435-0005	Lift-Out	S-K	19.0 x 26.0	483.0 x 660.0	21.7 x 28.7	551.0 x 729.0	24.7 x 28.7	551.0 x 729.0	56	25

Hinged, Aluminum Ring



Hinged, Steel Ring



HINGED COMPRESSION SEAL

Part No	Style	Ring	Clear (in) TOL +.20/-0	Clear (mm) TOL +5.1/-0	*Rough (in)	*Rough (mm)	Overall (cover+ring) (in)	Overall (cover+ring) (mm)	lbs	kg
2471-0002	Hinged	A-C	12.0 x 18.0	304.0 x 457.0	15.2 x 21.2	386.0 x 539.0	20.5 x 24.7	520.0 x 627.0	29	14
2471-0003	Hinged	S-C	12.0 x 18.0	305.0 x 457.0	14.9 x 20.8	379.0 x 529.0	17.2 x 20.8	437.0 x 529.0	32	14
2471-0005	Hinged	S-C	12.0 x 18.0	305.0 x 457.0	14.9 x 20.8	379.0 x 529.0	17.2 x 20.8	437.0 x 529.0	32	14
2473-0002	Hinged	A-C	15.0 x 24.0	381.0 x 610.0	17.8 x 26.7	451.0 x 678.0	23.4 x 30.6	594.0 x 777.0	37	17
2473-0003	Hinged	S-C	15.0 x 24.0	381.0 x 610.0	17.4 x 26.5	443.0 x 673.0	19.7 x 26.5	500.0 x 673.0	40	18
2473-0005	Hinged	S-C	15.0 x 24.0	381.0 x 610.0	17.4 x 26.5	443.0 x 673.0	19.7 x 26.5	500.0 x 673.0	40	18

*does not include hinge pockets

HINGED KNIFE EDGE SEAL

Part No	Style	Ring	Clear (in) TOL +.20/-0	Clear (mm) TOL +5.1/-0	*Rough (in)	*Rough (mm)	Overall (cover+ring) (in)	Overall (cover+ring) (mm)	lbs	kg
2474-0002	Hinged	A-K	15.0 x 24.0	380.0 x 610.0	18.1 x 27.2	460.0 x 690.0	22.8 x 30.5	578.0 x 775.0	39	18
2474-0003	Hinged	S-K	15.0 x 24.0	381.0 x 610.0	17.9 x 26.7	454.0 x 678.0	20.1 x 26.7	510.0 x 678.0	53	24
2474-0005	Hinged	S-K	15.0 x 24.0	381.0 x 610.0	17.9 x 26.7	454.0 x 678.0	20.1 x 26.7	510.0 x 678.0	53	24
2475-0002	Hinged	A-K	19.0 x 26.0	483.0 x 660.0	21.9 x 28.7	557.0 x 730.0	27.2 x 32.4	691.0 x 824.0	46	21
2475-0003	Hinged	S-K	19.0 x 26.0	483.0 x 660.0	21.9 x 28.8	557.0 x 732.0	24.0 x 28.8	610.0 x 732.0	61	28
2475-0005	Hinged	S-K	19.0 x 26.0	483.0 x 660.0	21.9 x 28.8	557.0 x 732.0	24.0 x 28.8	610.0 x 732.0	61	28

*does not include hinge pockets



Round Hatches (Compression)

Lift-Out,
Aluminum Ring



Lift-Out,
Steel Ring



Lift-Out, Aluminum Ring



LIFT-OUT COMPRESSION SEAL

Part No	Style	Ring	Clear (in) TOL +.20/-0	Clear (mm) TOL +5.1/-0	Rough (in)	Rough (mm)	Overall (cover+ring) (in)	Overall (cover+ring) (mm)	lbs	kg
2401-0002	Lift-Out	A-C	8.0	203.2	10.4	264.9	12.2	309.9	8	4
2402-0002	Lift-Out	A-C	12.0	304.8	14.3	364.3	17.4	441.2	14	6
2402-0003	Lift-Out	S-C	12.0	304.8	14.7	372.4	14.7	372.4	16	7
2402-0005	Lift-Out	S-C	12.0	304.8	14.7	372.4	14.7	372.4	16	7
2403-0002	Lift-Out	A-C	15.02	381.4	17.6	447.8	21.6	549.4	29	13
2403-0003	Lift-Out	S-C	15.0	381.0	17.5	444.5	17.5	444.5	32	14
2403-0005	Lift-Out	S-C	15.0	381.0	17.5	444.5	17.5	444.5	32	14
2404-0002	Lift-Out	A-C	18.0	457.4	21.0	533.1	24.5	621.1	31	14
2404-0003	Lift-Out	S-C	18.0	457.0	20.7	526.0	20.7	526.0	32	14
2404-0005	Lift-Out	S-C	18.0	457.0	20.7	526.0	20.7	526.0	32	14
2406-0002	Lift-Out	A-C	20.0	508.0	22.7	575.5	26.5	674.0	37	17
2406-0003	Lift-Out	S-C	20.0	507.9	22.5	571.5	22.5	571.5	44	20
2406-0005	Lift-Out	S-C	20.0	508.0	22.6	574.9	22.6	574.9	44	20
2408-0002	Lift-Out	A-C	22.0	558.8	24.7	627.8	28.2	717.0	43	19
2408-0003	Lift-Out	S-C	22.0	558.8	24.5	622.3	24.5	622.3	44	20
2408-0005	Lift-Out	S-C	22.0	558.8	24.5	622.3	24.5	622.3	45	20
2411-0002	Lift-Out	A-C	23.8	603.0	26.9	683	30.8	781.0	54	25
2411-0003	Lift-Out	S-C	23.8	603.3	26.8	679.5	26.8	679.5	55	25
2411-0005	Lift-Out	S-C	23.8	603.3	26.8	679.5	26.8	679.5	55	25
2415-0006*	Lift-Out	A-C	30.0	762.0	33.5	850.0	37.1	943.0	81	37
2415-0007*	Lift-Out	S-C	30.0	762.0	33.5	851.0	33.5	851.0	87	40
2415-0009*	Lift-Out	S-C	30.0	762.0	33.5	851.0	33.5	851.0	87	40

Hinged, Aluminum Ring



Hinged, Steel Ring



HINGED COMPRESSION SEAL

Part No	Style	Ring	Clear (in) TOL +.20/-0	Clear (mm) TOL +5.1/-0	*Rough (in)	*Rough (mm)	Overall (cover+ring) (in)	Overall (cover+ring) (mm)	lbs	kg
2441-0002	Hinged	A-C	18.0	457.0	20.7	578.0	25.7	652.0	41	19
2441-0003	Hinged	S-C	18.0	457.0	20.7	578.0	22.9	580.0	41	19
2441-0005	Hinged	S-C	18.0	457.0	20.7	578.0	22.9	580.0	41	19
2443-0002	Hinged	A-C	19.5	495.0	22.7	578.0	27.4	697.0	44	20
2443-0003	Hinged	S-C	20.2	512.0	22.7	577.0	24.9	631.0	51	23
2443-0005	Hinged	S-C	20.2	512.0	22.7	577.0	24.9	631.0	51	23
2447-0002	Hinged	A-C	24.0	610.0	26.6	674.0	32.3	820.0	59	27
2447-0003	Hinged	S-C	24.0	610.0	26.4	670.0	29.1	740.0	59	27
2447-0005	Hinged	S-C	24.0	610.0	26.6	674.0	30.4	772.0	59	27
2452-0006 [~]	Hinged	A-C	30.4	773	33.5	850.0	39.1	994.0	93	42
2452-0007 [~]	Hinged	S-C	30.4	773	33.5	850.0	37.3	948.0	115	52

*does not include hinge pockets

[~] denotes stainless steel dogging mechanism



Round Hatches (Knife Edge)

Lift-Out, Aluminum Ring



Lift-Out, Steel Ring



LIFT-OUT KNIFE EDGE SEAL

Part No	Style	Ring	Clear (in) TOL +.20/-0	Clear (mm) TOL +5.1/-0	Rough (in)	Rough (mm)	Overall (cover+ring) (in)	Overall (cover+ring) (mm)	lbs	kg
2405-0002	Lift-Out	A-K	18.3	463.7	20.9	531.6	24.50	622.3	31	14
2405-0003	Lift-Out	S-K	18.0	457.2	21.1	534.9	21.1	534.9	44	20
2405-0005	Lift-Out	S-K	18.0	457.2	21.1	534.9	21.1	534.9	44	20
2407-0002	Lift-Out	A-K	20.0	508.0	22.9	580.4	26.0	600.4	35	16
2407-0003	Lift-Out	S-K	20.0	508.0	22.6	574.5	22.6	574.5	51	23
2407-0005	Lift-Out	S-K	20.0	508.0	22.6	574.5	22.6	574.5	51	23
2412-0002	Lift-Out	A-K	24.1	612.2	27.1	688.7	30.6	777.9	55	25
2412-0003	Lift-Out	S-K	24.0	609.6	26.6	676.3	26.6	676.3	65	30
2412-0005	Lift-Out	S-K	24.0	609.6cc	26.6	676.3	26.6	676.3	65	30

Hinged, Aluminum Ring



Hinged, Steel Ring



HINGED KNIFE EDGE SEAL

Part No	Style	Ring	Clear (in) TOL +.20/-0	Clear (mm) TOL +5.1/-0	*Rough (in)	*Rough (mm)	Overall (cover+ring) (in)	Overall (cover+ring) (mm)	lbs	kg
2442-0002	Hinged	A-K	18.0	457.0	22.6	574.0	25.8	656.0	34	15.4
2442-0003	Hinged	S-K	18.0	457.0	22.6	573.0	22.9	580.0	47	21.4
2442-0005	Hinged	S-K	18.0	457.0	22.6	573.0	22.9	580.0	47	21.4
2444-0002	Hinged	A-K	20.0	511.3	24.9	633.3	27.7	702.3	40	18.1
2444-0003	Hinged	S-K	20.0	508.0	24.7	627.4	24.7	627.4	52	24
2444-0005	Hinged	S-K	20.0	508.0	24.7	627.4	24.7	627.4	52	24
2448-0002	Hinged	A-K	24.0	609.6	29.1	739.1	32.3	820.4	56	26
2448-0003	Hinged	S-K	24.0	609.6	29.0	734.5	29.3	743.0	71	33
2448-0005	Hinged	S-K	24.0	610.0	28.9	734.0	29.3	743.0	71	33

*does not include hinge pockets

^ denotes stainless steel dogging mechanism



Rectangle Hatches

Lift-Out, Aluminum Ring



Lift-Out, Steel Ring



LIFT-OUT RECTANGLE KNIFE EDGE SEAL

Part No	Style	Ring	Clear (in) TOL +.20/-0	Clear (mm) TOL +5.1/-0	Rough (in)	Rough (mm)	Overall (cover+ring) (in)	Overall (cover+ring) (mm)	lbs	kg
2421-0002	Lift-Out	A-K	18.0 x 24.0	457 x 610	20.3 x 26.2	515 x 665	24.0 x 29.9	610 x 760	42	19
2421-0003	Lift-Out	S-K	18.0 x 24.0	457 x 610	20.6 x 26.6	524 x 676	20.6 x 26.6	524 x 676	50	23
2421-0005	Lift-Out	S-K	18.0 x 24.0	457 x 610	20.6 x 26.6	524 x 676	20.6 x 26.6	524 x 676	50	23
2436-0002	Lift-Out	A-K	24.6 x 28.6	625 x 727	27.5 x 31.5	697 x 799	31.2 x 35.2	793 x 894	?	?
2436-0003	Lift-Out	S-K	24.7 x 28.7	627.4 x 729.0	27.3 x 31.3	693.4 x 795.0	27.3 x 31.3	693.4 x 795.0	?	?
2436-0005	Lift-Out	S-K	24.7 x 28.7	627.4 x 729.0	27.3 x 31.3	693.4 x 795.0	27.3 x 31.3	693.4 x 795.0	?	?
2429-0002	Lift-Out	A-K	30.0 x 36.0	762 x 914	32.8 x 38.8	834 x 987	36.3 x 42.3	923 x 1075	90	41
2429-0003	Lift-Out	S-K	30.0 x 36.0	762 x 914	33.5 x 39.5	850 x 1003	33.5 x 39.5	850 x 1003	113	50
2429-0005	Lift-Out	S-K	30.0 x 36.0	762 x 914	33.5 x 39.5	850 x 1003	33.5 x 39.5	850 x 1003	113	50

Hinged, Aluminum Ring



Hinged, Steel Ring



HINGED RECTANGLE KNIFE EDGE SEAL

Part No	Style	Ring	Clear (in) TOL +.20/-0	Clear (mm) TOL +5.1/-0	*Rough (in)	*Rough (mm)	Overall (cover+ring) (in)	Overall (cover+ring) (mm)	lbs	kg
2461-0002	Hinged	A-K	18.0 x 24.0	458 x 610	20.9 x 26.9	532 x 684	25.7 x 30.1	652 x 765	41	19
2461-0003	Hinged	S-K	18.0 x 24.0	458 x 610	20.5 x 26.5	521 x 673	22.8 x 26.5	578 x 673	60	27
2461-0005	Hinged	S-K	18.0 x 24.0	458 x 610	20.5 x 26.5	521 x 673	22.8 x 26.5	578 x 673	60	27
2476-0002	Hinged	A-K	24.8 x 28.5	629 x 724	27.5 x 31.4	629 x 797	33.1 x 35.1	841 x 891	68	31
2476-0003	Hinged	S-K	24.8 x 28.8	629 x 730	27.5 x 31.4	629 x 797	29.7 x 31.4	755 x 797	?	?
2476-0005	Hinged	S-K	24.8 x 28.8	629 x 730	27.5 x 31.4	629 x 797	29.7 x 31.4	755 x 797	?	?
2469-0002	Hinged	A-K	30.6 x 36.6	778 x 931	32.8 x 38.8	834 x 987	38.0 x 42.3	964 x 1075	94	43
2469-0003	Hinged	S-K	30.0 x 36.0	762 x 914	33.5 x 39.5	850 x 1003	37.5 x 39.5	952 x 1003	140	64
2469-0005	Hinged	S-K	30.0 x 36.0	762 x 914	33.5 x 39.5	850 x 1003	37.5 x 39.5	952 x 1003	140	64

*does not include hinge pockets

Square Hatches

Hinged, Aluminum Ring



Lift-Out, Steel Ring



LIFT-OUT SQUARE KNIFE EDGE SEAL

Part No	Style	Ring	Clear (in) TOL +.20/-0	Clear (mm) TOL +5.1/-0	Rough (in)	Rough (mm)	Overall (cover+ring) (in)	Overall (cover+ring) (mm)	lbs	kg
2422-0002	Lift-Out	A-K	20.1 x 20.1	512.0 x 512.0	22.7 x 22.7	576.0 x 576.0	26.5 x 26.5	673.0 x 673.0	47	21
2422-0003	Lift-Out	S-K	20.1 x 20.1	511.0 x 511.0	22.8 x 22.8	578.0 x 578.0	22.8 x 22.8	578.0 x 578.0	61	28
2422-0005	Lift-Out	S-K	20.0 x 20.0	508.0 x 508.0	22.8 x 22.8	578.0 x 578.0	22.8 x 22.8	578.0 x 578.0	61	28
2423-0002	Lift-Out	A-K	22.0 x 22.0	559.0 x 559.0	24.8 x 24.8	630.0 x 630.0	28.6 x 28.6	727.0 x 727.0	48	22
2423-0003	Lift-Out	S-K	22.0 x 22.0	559.0 x 559.0	24.9 x 24.9	632.0 x 632.0	24.9 x 24.9	632.0 x 632.0	62	29
2423-0005	Lift-Out	S-K	22.0 x 22.0	559.0 x 559.0	24.9 x 24.9	632.0 x 632.0	24.9 x 24.9	632.0 x 632.0	62	29
2424-0002	Lift-Out	A-K	24.6 x 24.6	625.0 x 625.0	27.5 x 27.5	697.0 x 697.0	31.2 x 31.2	792.5 x 792.5	57	26
2424-0003	Lift-Out	S-K	24.0 x 24.0	610.0 x 610.0	27.4 x 27.4	695.0 x 695.0	27.4 x 27.4	695.0 x 695.0	74	33
2424-0005	Lift-Out	S-K	24.0 x 24.0	610.0 x 610.0	27.2 x 27.2	692.0 x 692.0	27.2 x 27.2	692.0 x 692.0	74	33
2427-0002	Lift-Out	A-K	27.2 x 27.2	690.3 x 690.3	29.6 x 29.6	752.0 x 752.0	33.6 x 33.6	853.9 x 853.9	59	26
2427-0003	Lift-Out	S-K	27.0 x 27.0	686.0 x 686.0	29.6 x 29.6	752.0 x 752.0	29.6 x 29.6	752.0 x 752.0	78	35
2427-0005	Lift-Out	S-K	27.0 x 27.0	686.0 x 686.0	29.6 x 29.6	752.0 x 752.0	29.6 x 29.6	752.0 x 752.0	78	35
2426-0006 ¹	Lift-Out	A-K	30.1 x 30.1	765.0 x 765.0	32.8 x 32.8	833.0 x 833	36.7 x 36.7	932.0 x 932.0	85	38
2426-0007 ¹	Lift-Out	S-K	30.0 x 30.0	762.0 x 762.0	32.6 x 32.6	829.0 x 829.0	32.6 x 32.6	829.0 x 829.0	107	49
2426-0009 ¹	Lift-Out	S-K	30.0 x 30.0	762.0 x 762.0	32.6 x 32.6	829.0 x 829.0	32.6 x 32.6	829.0 x 829.0	107	49
2428-0002	Lift-Out	A-K	36.0 x 36.0	914.0 x 914.0	39.3 x 39.3	998.0 x 998.0	42.5 x 42.5	1080.0 x 1080.0	100	45
2428-0003	Lift-Out	S-K	36.0 x 36.0	914.0 x 914.0	39.3 x 39.6	997.0 x 1005.0	39.3 x 39.6	997.0 x 1005.0	110	50
2428-0005	Lift-Out	S-K	36.0 x 36.0	914.0 x 914.0	39.3 x 39.3	997.0 x 997.0	39.3 x 39.3	997.0 x 997.0	110	50

¹ denotes stainless steel dogging mechanism

Hinged, Aluminum Ring



Hinged, Steel Ring

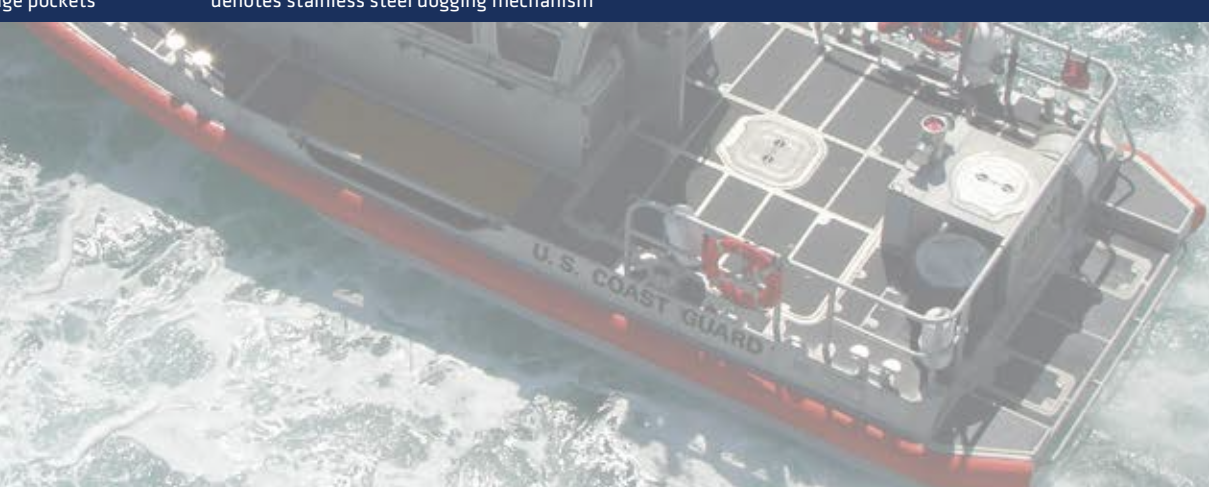


HINGED SQUARE KNIFE EDGE SEAL

Part No	Style	Ring	Clear (in) TOL +.20/-0	Clear (mm) TOL +5.1/-0	*Rough (in)	*Rough (mm)	Overall (cover+ring) (in)	Overall (cover+ring) (mm)	lbs	kg
2462-0002	Hinged	A-K	20.0 x 20.0	508.0 x 508.0	22.5 x 22.9	571.0 x 582.0	26.4 x 28.2	672.0 x 715.0	42	19
2462-0003	Hinged	S-K	20.2 x 20.2	512.0 x 512.0	22.8 x 22.8	579.4 x 579.4	22.8 x 25.03	579.4 x 635.7	59	27
2462-0005	Hinged	S-K	20.2 x 20.2	512.0 x 512.0	22.8 x 22.8	579.4 x 579.4	22.8 x 25.03	579.4 x 635.7	59	27
2463-0002	Hinged	A-K	22.0 x 22.0	559.0 x 559.0	25.2 x 25.2	640.0 x 640.0	28.8 x 29.9	730.0 x 759.0	51	23
2463-0003	Hinged	S-K	22.0 x 22.1	559.0 x 562.0	24.6 x 24.6	625.0 x 625.0	24.6 x 26.8	625.0 x 681.0	64	29
2463-0005	Hinged	S-K	22.0 x 22.0	559.0 x 559.0	24.6 x 24.6	625.0 x 625.0	24.6 x 26.8	625.0 x 681.0	64	29
2464-0002	Hinged	A-K	24.0 x 24.0	610.0 x 610.0	27.5 x 27.5	698.0 x 698.0	31.2 x 33.1	792.0 x 840.0	57	26
2464-0003	Hinged	S-K	24.0 x 24.0	610.0 x 610.0	27.4 x 27.4	695.0 x 695.0	27.4 x 29.6	695.0 x 752.0	65	29
2464-0005	Hinged	S-K	24.0 x 24.0	610.0 x 610.0	27.4 x 27.4	695.0 x 695.0	27.4 x 29.6	695.0 x 752.0	65	29
2467-0002	Hinged	A-K	27.2 x 27.2	690.3 x 690.3	29.5 x 29.5	749.1 x 749.1	33.6 x 35.5	854.9 x 901.5	68	33
2467-0003	Hinged	S-K	27.0 x 27.0	685.8 x 685.8	29.6 x 29.6	752.3 x 752.3	29.6 x 31.8	752.3 x 807.9	83	37
2467-0005	Hinged	S-K	27.0 x 27.0	685.8 x 685.8	29.6 x 29.6	752.3 x 752.3	29.6 x 31.8	752.3 x 807.9	83	37
2466-0006 [^]	Hinged	A-K	30.0 x 30.0	762.0 x 762.0	32.8 x 32.8	833.0 x 833.0	36.7 x 37.8	932.0 x 960.0	88	40
2466-0007 [^]	Hinged	S-K	30.0 x 30.0	762.0 x 762.0	32.6 x 32.7	829.0 x 830.0	32.6 x 34.8	829.0 x 884.0	110	50
2466-0009 [^]	Hinged	S-K	30.0 x 30.0	762.0 x 762.0	32.6 x 32.7	829.0 x 830.0	32.6 x 34.8	829.0 x 884.0	110	50
2468-0002	Hinged	A-K	36.4 x 36.7	923.7 x 931.7	39.3 x 40.0	998.6 x 1016.0	42.2 x 44.2	1072.0 x 1123.8	106	45
2468-0003	Hinged	S-K	36.6 x 36.9	930.3 x 938.2	39.3 x 39.9	997.0 x 1013.5	39.3 x 43.6	997.0 x 1106.5	145	66
2468-0005	Hinged	S-K	36.6 x 36.9	930.3 x 938.2	39.3 x 40.0	997.0 x 1016.0	39.3 x 43.6	997.0 x 1106.5	146	66

[^] does not include hinge pockets

[^] denotes stainless steel dogging mechanism



Ductile Iron Hatches

Lift-Out, Steel Ring



Lift-Out, Steel Ring

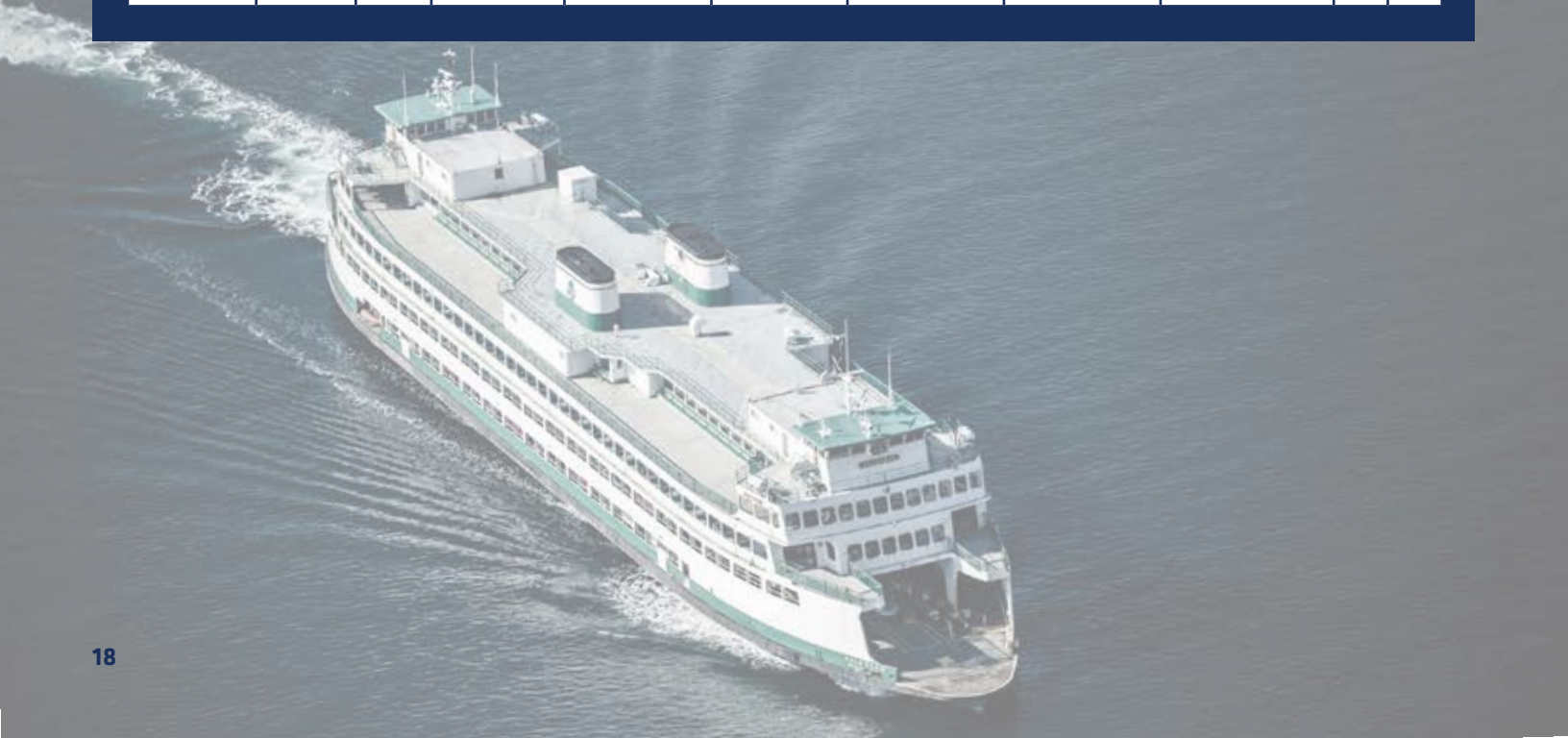


Hinged, Steel Ring



DUCTILE IRON HATCHES

Part No	Style	Ring	Clear (in) TOL $\pm.20/-0$	Clear (mm) TOL $+5.1/-0$	Rough (in)	Rough (mm)	Overall (cover+ring) (in)	Overall (cover+ring) (mm)	lbs	kg
2481-0107	Lift-Out	S-K	18.1	460.0	20.6	523.0	20.6	523.0	78	35
2481-0109	Lift-Out	S-K	18.1	460.0	20.6	523.0	20.6	523.0	78	35
2482-0107	Lift-Out	S-K	23.6	599.0	26.6	676.0	26.6	676.0	110	50
2482-0109	Lift-Out	S-K	23.6	599.0	26.6	676.0	26.6	676.0	110	50
2483-0107	Lift-Out	S-K	15.0 x 24.0	382.0 x 610.0	16.8 x 25.6	427.0 x 650.2	16.8 x 25.6	427.0 x 650.0	85	39
2483-0109	Lift-Out	S-K	15.0 x 24.0	382.0 x 610.0	16.8 x 25.6	427.0 x 650.2	16.8 x 25.6	427.0 x 650.0	85	39
2480-0107	Hinged	S-K	24.7 x 24.7	629.0 x 629.0	27.4 x 27.4	695.0 x 695.0	29.6 x 27.4	752.0 x 695.0	155	70
2480-0109	Hinged	S-K	24.7 x 24.7	629.0 x 629.0	27.4 x 27.4	695.0 x 695.0	29.6 x 27.4	752.0 x 695.0	155	70



Ductile Iron Loading Limits

Below is the maximum allowable loading for cast iron covers listed and their aluminium equivalents. The following values CANNOT be used to extrapolate loading limits on other models or cover/ring combinations.

Hatch Part Number, Description	Max Load kN (lbf)	Max Load- Fatigue kN (lbf)	Max Watertight pressure kPa (psi)	Comment
2483-1101 (0136-4001), Oval 15"x24" Cast Iron	13 (2900)	-	28 (4)	All rings excluding aluminium
2433-1001 (2433-3001), Oval 15"x24" Aluminium	2.5 (550)	1.5 (350)	28 (4)	All rings, As cast
2482-1101 (0136-4003), Round 24" Cast Iron	17 (3800)	-	43 (6.2)	All rings excluding aluminium
2411-1001 (2411-3001), Round 24" Aluminium	4.5 (1000)	3 (650)	43 (6.2)	All rings, As cast
2481-1101 (0136-4002), Round 18" Cast Iron	16 (3600)	-	38 (5.5)	All rings excluding aluminium
2404-1001 (0111-4106), Round 18" Aluminium	3 (650)	2 (450)	38 (5.5)	All rings, As cast
2480-1101 (0136-4006), Hinged Square 24"x24" Cast Iron	*3.5 (800)	-	*55 (8)	All rings excluding aluminium
2464-1001 (2464-3001), Hinged Square 24"x24" Aluminium	1.5 (350)	1 (200)	55 (8)	All rings, As cast
* Failure mode is non-typical and found at hinge pin				

Definitions

- Max load: maximum point load acceptable on any point on top of the cover.
- Max load-fatigue: maximum cyclic point load acceptable on any point on top of the cover. Higher loads will result in non-infinite fatigue life which may be acceptable in certain applications.
- Max watertightness pressure: Maximum tank test pressure (inside direction).

Analysis

The load results are based on finite element analysis of hatch/ring combinations. In the case of aluminium castings, the fatigue limit is also included as it is lower than the yield limit. A 2x safety factor was assumed in all instances.

The watertightness pressures listed are based on Type Approvals and previous sealing results. Note that only the aluminium models hold TA certificates.

Higher loading results may be acceptable based on the application and other requirements. Please contact Engineering if additional clarity is required.

OPTIONS

2400 Series CAST HATCHES

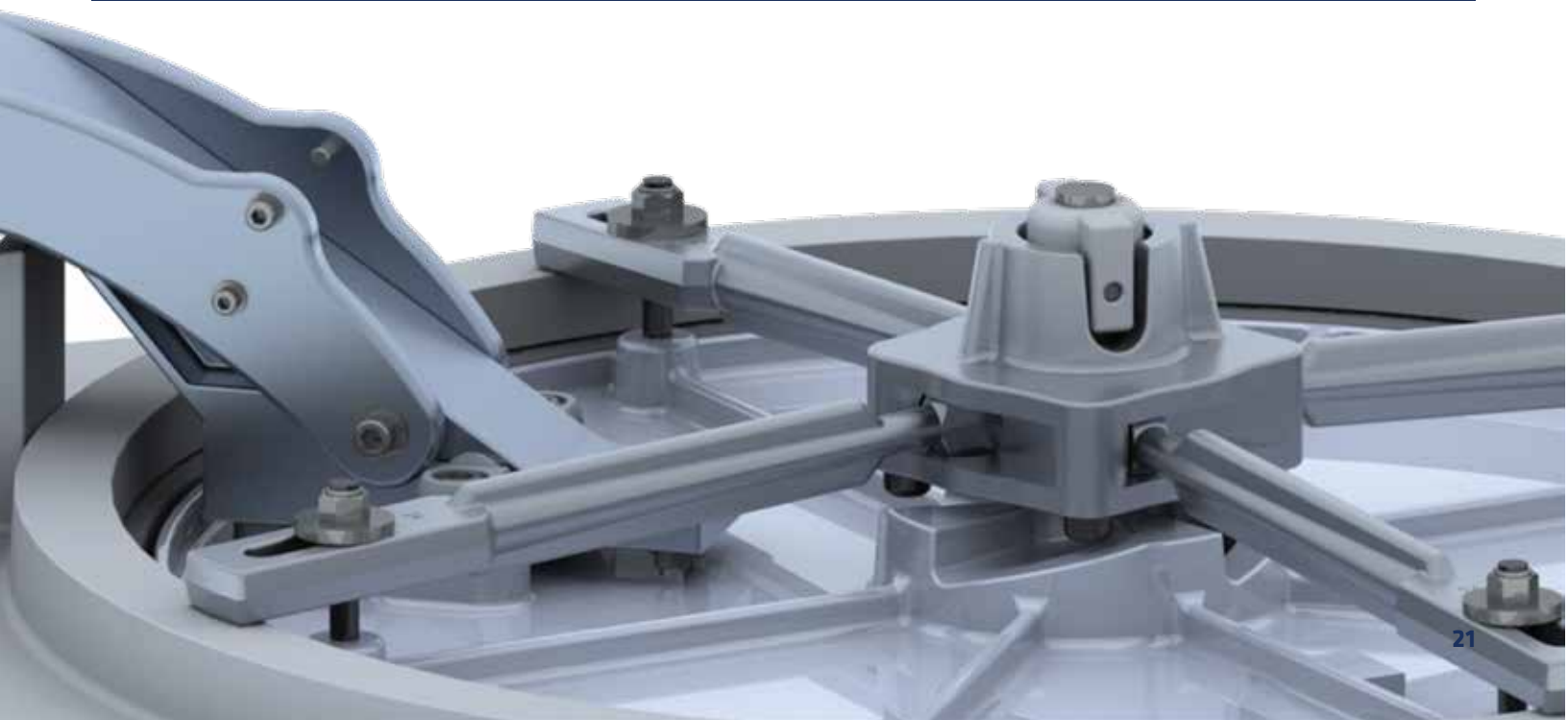
Flat Top - Yoke Hinge

YOKE HINGE KNIFE EDGE SEAL

Part No	Shape	Ring	Clear Opening (in) TOL +.20/-0	Clear Opening (mm) TOL +5.1/-0	Rough (in)	Rough (mm)	Overall (cover+ring) (in)	Overall (cover+ring) (mm)	lbs	kg
2485-0062	Round	Aluminum	20.0	508	22.5	571	26.0 x 31.3	660 x 795	52	24
2485-0063	Round	Steel	20.0	508	22.5	571	22.6 x 29.3	575 x 744	62	28
2485-0065	Round	Stainless	20.0	508	22.5	571	22.6 x 29.3	575 x 744	62	28
2486-0062	Round	Aluminum	22.0	559	24.8	630	28.3 x 31.1	718 x 789	55	25
2486-0063	Round	Steel	22.0	559	25.1	638	25.1 x 30.6	638 x 776	66	30
2486-0065	Round	Stainless	22.0	559	25.1	638	25.1 x 30.6	638 x 776	66	30
2487-0062	Round	Aluminum	24.0	610	26.9	682	30.6 x 36.2	778 x 921	58	26
2487-0063	Round	Steel	24.0	610	26.9	682	26.9 x 32.9	682 x 835	70	32
2487-0065	Round	Stainless	24.0	610	26.9	682	26.9 x 32.9	682 x 835	70	32
2490-0062	Oval	Aluminum	15.0 x 24.0	381 x 610	18.1 x 27.0	459 x 655	21.6 x 35.6	548 x 905	48	22
2492-0062	Oval	Aluminum	19.0 x 26.0	483 x 660	21.4 x 28.4	544 x 722	30.2 x 32.2	768 x 819	56	25
2492-0063	Oval	Steel	19.0 x 26.0	483 x 660	21.7 x 28.7	551 x 729	28.7 x 28.5	729 x 724	56	25
2492-0065	Oval	Stainless	19.1 x 26.1	485 x 662	24.7 x 28.7	551 x 729	28.7 x 28.5	729 x 724	70	32

YOKE HINGE KNIFE EDGE SEAL

Part No	Shape	Ring	Clear Opening (in) TOL +.20/-0	Clear Opening (mm) TOL +5.1/-0	Rough (in)	Rough (mm)	Overall (cover+ring) (in)	Overall (cover+ring) (mm)	lbs	kg
2491-0062	Rectangle	Aluminum	18.0 x 24.0	457 x 610	20.4 x 26.1	517 x 663	29.1 x 29.9	739 x 760	41	19
2491-0063	Rectangle	Steel	18.0 x 24.0	457 x 610	20.5 x 26.5	521 x 673	27.5 x 26.5	699 x 673	41	18
2491-0065	Rectangle	Stainless	18.0 x 24.0	457 x 610	20.5 x 26.5	521 x 673	27.5 x 26.5	699 x 673	41	18
2493-0062	Square	Aluminum	20.0 x 20.0	508 x 508	22.8 x 22.8	580 x 580	26.5 x 31.4	673 x 799	55	25
2493-0063	Square	Steel	20.0 x 20.0	508 x 508	22.8 x 22.8	578 x 578	22.8 x 29.8	578 x 757	72	33
2493-0065	Square	Stainless	20.0 x 20.0	508 x 508	22.8 x 22.8	578 x 578	22.8 x 29.8	578 x 757	72	33
2494-0062	Square	Aluminum	22.0 x 22.0	559 x 559	24.8 x 24.8	630 x 630	28.6 x 33.8	727 x 857	64	30
2494-0063	Square	Steel	22.4 x 22.4	568 x 568	24.9 x 24.9	632 x 632	24.9 x 30.9	632 x 784	77	35
2494-0065	Square	Stainless	22.0 x 22.0	559 x 559	24.6 x 24.6	624 x 624	24.6 x 30.6	624 x 776	77	35
2495-0062	Square	Aluminum	24.6 x 24.6	624 x 625	27.5 x 27.4	697 x 696	31.1 x 36.2	791 x 919	74	34
2495-0063	Square	Steel	24.5 x 24.5	622 x 622	27.1 x 27.1	689 x 689	27.1 x 34.18	689 x 868	81	37
2495-0065	Square	Stainless	24.7 x 24.7	629 x 629	27.2 x 27.2	692 x 692	27.2 x 34.2	691 x 869	81	37
2497-0062	Square	Aluminum	36.6 x 36.6	929 x 929	39.7 x 39.7	1009 x 1009	43.2 x 48.2	1096 x 1225	125	57
2497-0062	Square	Steel	36.0 x 36.0	914 x 914	39.6 x 39.6	1005 x 1005	39.6 x 45.3	1005 x 1150	125	57
2497-0063	Square	Stainless	36.0 x 36.0	914 x 914	39.6 x 39.6	1005 x 1005	39.6 x 45.3	1005 x 1150	125	57
2499-0062	Square	Aluminum	27.2 x 27.2	690 x 690	29.5 x 29.6	749 x 751	33.6 x 38.7	854 x 983	78	35
2499-0063	Square	Steel	27.0 x 27.0	686 x 686	29.6 x 29.6	753 x 753	29.6 x 36.6	753 x 930	104	47
2499-0065	Square	Stainless	27.0 x 27.0	686 x 686	29.6 x 29.6	753 x 753	29.6 x 36.6	753 x 930	104	47



Customizations

RAISED COAMINGS



RAISED COAMING

- Aluminum, Steel, or Stainless Steel Options
- Custom Coaming Height Available
- Knife-edge or Compression Seal
- Lift-Out or Hinged Style
- Dog Pocket Options (shown top right)
- Spring Assist
- Hold Opens

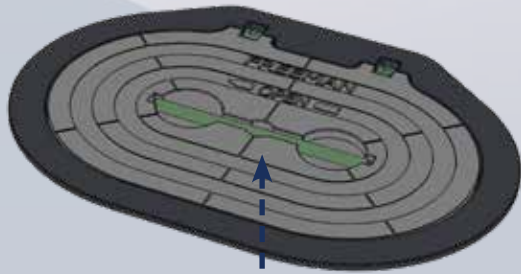
VERTICAL MOUNT

- Aluminum, Steel or Stainless Steel Coaming Options
- Hinged or Lift-Out
 - Blade Hinge (below left)
 - Fixed Pivot Hinge (below right)
- Lift-Out, alignment wedges available
- Spring Loaded Dog Arms
- Detent Topside Handle

VERTICAL MOUNT



Topside Handle Options



Standard Handle 0031-2158

[SS] Standard
Integral Handle
Includes o-ring and pin



Optional Removable Handles:

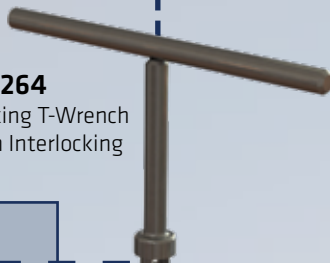
0435-2012

Winch Handle
Use with Flat Top
Bi-square Spindle



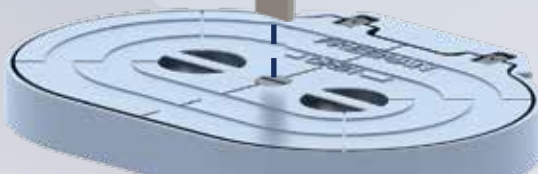
0031-2264

Interlocking T-Wrench
Use with Interlocking
Spindle



0021-2008

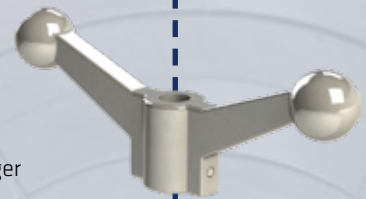
T-Style Wrench Handle
Use with T-Style
Slot Spindle



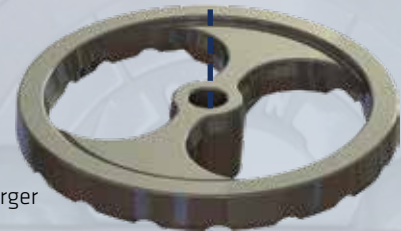
Handle Options

Inside Escape Handle Options

-0001 **0031-2064**
[AL] w/ Pin
18" Hatches and larger



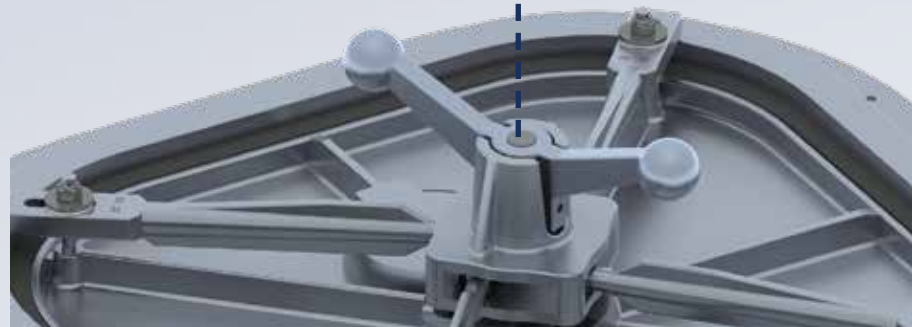
-0002 **0031-2065**
7.5" O. D.
[AL] w/ Pin
20" Hatch and larger



-0003 **0031-2087**
12.5" O.D.
[AL] w/ Pin
20" Hatches and larger



-0004 **0031-2119**
[SS mill finish] w/ Pin
Use with hatches that have SS
dogging mechanism



Hinge Options



0461-2205
 [SS] Standard
 Hinge Assembly
 Double Acting
 Allows cover to lay flat



0461-2202
 [SS] Standard
 Hinge Assembly
 Single Pivot
 Use with hold open or
 Gas Shocks



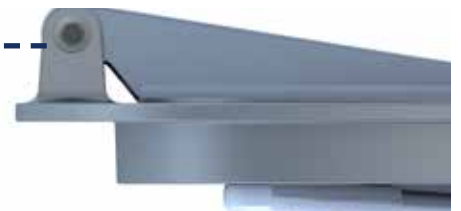
0461-2077
 Yoke Hinge, Concealed
 Includes Hold Open



0461-2071
 [SS] 2 x 4 Hinge, Raised
 Use with Teak for Flush
 Fit



0462-2021
 Blade Hinge
 Use with Raised Coaming
 & Vertical Mount Hatches

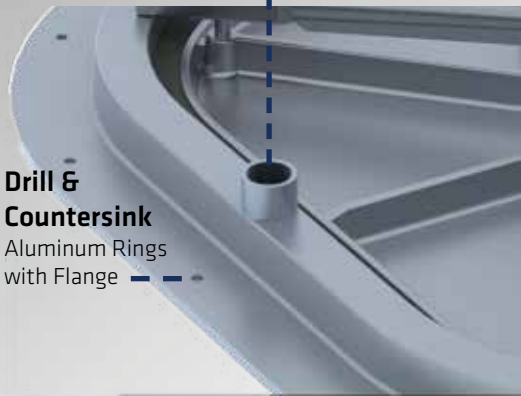


Hold Open Options

Miscellaneous Options



Coaming Drain
Use with Knife-Edge



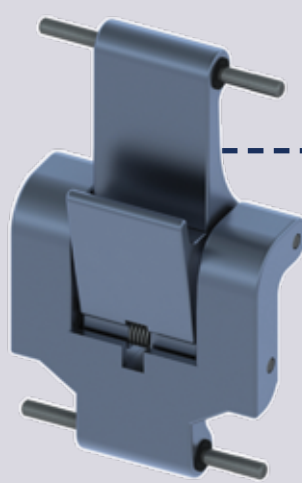
Drill & Countersink
Aluminum Rings with Flange

Sensor Assembly

Magnetic Contact
Senses if hatch isn't
Dogged Completely



Hatch Shown above
with Inside Escape Handle, Drain Hold Open
Ring Drilled and Countersunk



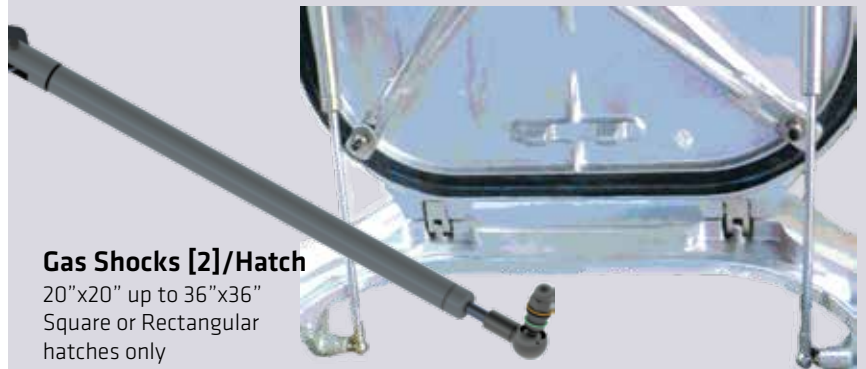
0031-2007

Hold Open
Use with 18", 20", 24", 18"x24", 15"x24",
20"x20", 22"x22", 24"x24", 19"x26"



0423-1023

Hold Open , Slide Rod
Use with 24"x24" or larger



Gas Shocks [2]/Hatch

20"x20" up to 36"x36"
Square or Rectangular
hatches only

SCAN TO GET A QUOTE
FROM OUR STORE



ADVANTECSTORE.COM/
PRODUCTS/2400-NON-SKID

3M™ 2400 NON-SKID

FOR ALL HINGED OR LIFT-OUT FM 2400 SERIES HATCHES



UPGRADE, PROTECT, AND ENJOY A SAFER DECK EXPERIENCE

Upgrade your hatches or order new ones directly from the factory with ease. With 3M™ Non-Skid available in black or gray, you can enhance both safety and style on your vessel. Installation is a breeze, taking less than 30 minutes!

Non-Skid Key Features

EASY TO CLEAN

- An open abrasive pattern resists clogging and reduces clean up time

ENHANCED SAFETY & STYLE

- Our 3M Non-Skid is available in both black and gray, allowing you to choose the color that best complements your vessel. Not only does it add a touch of elegance, but it also provides superior grip to ensure a safer deck experience.

3M™ SAFETY WALK™

- 310 & 710 Coarse Tape & Tread
- Applied Thickness .048 in. (1.22 mm)

DURABLE AND SLIP RESISTANT IN THE MOST EXTREME CONDITIONS

- Tough polymer construction designed to withstand heavy traffic areas
- Extra-large abrasive particles provide additional slip and fall protection on wet surfaces

NON-SKID SIZES

	Black	Hatch Size	Gray
Round	0921-2411	8IN	0921-2410
	0921-2415	12IN	0921-2414
	0921-2417	15IN	0921-2416
	0921-2419	18/18K	0921-2418
	0921-2409	18H/18HK	0921-2408
	0921-2407	20/20K	0921-2400
	0921-2405	20H/20HK	0921-2398
	0921-2421	22IN	0921-2420
	0921-2423	24/24K	0921-2422
	0921-2413	24HK	0921-2412
	0921-2401	24H	0921-2394
	0921-2425	30IN	0921-2424
	0921-2427	30H	0921-2426
	Oval	0921-2431	12x18H
0921-2429		12x18	0921-2428
0921-2404		15x24H/15x24HK	0921-2397
0921-2406		15x24/15x24K	0921-2399
0921-2433		19x26K	0921-2432
0921-2435		19x26HK	0921-2434

	Black	Hatch Size	Gray
Rectangle	0921-2457	18x24K	0921-2456
	0921-2459	18x24HK	0921-2458
	0921-2461	24x28K	0921-2460
	0921-2463	24x28HK	0921-2462
	0921-2465	30x36K	0921-2464
	0921-2467	30x36HK	0921-2466
	0921-2437	20x20K	0921-2436
	0921-2439	20x20HK	0921-2438
	0921-2441	22x22K	0921-2440
	0921-2443	22x22HK	0921-2442
	0921-2403	24x24K	0921-2396
	0921-2402	24x24HK	0921-2395
	0921-2445	27x27K	0921-2444
	0921-2447	27x27HK	0921-2446
Square	0921-2449	30x30K	0921-2448
	0921-2451	30x30HK	0921-2450
	0921-2453	36x36K	0921-2452
	0921-2455	36x36HK	0921-2454

Fits both hinged and lift-out hatches

FREEMAN MARINE
NON-SKID



Ready in 3 Weeks or Less

Quick-Ship Program

These items are in stock or ready to ship within 3 weeks or less, guaranteed. If not, AdvanTec Marine will pay for ground shipping within the Continental North America*.

*Excluding Alaska & Hawaii.

We apply the spirit of invention and collaboration to evolve our business and industry; allowing us to deliver the most innovative solutions to our customers.

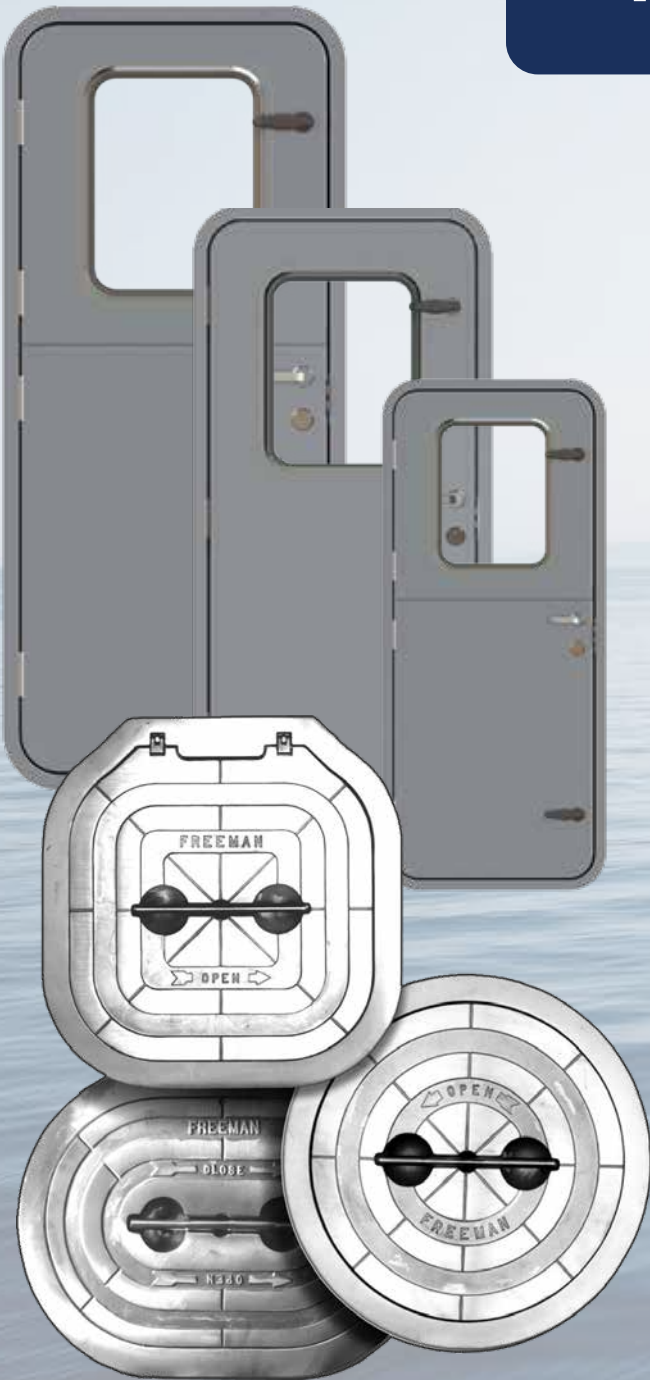
AdvanTec Marine's Quick-Ship program delivers rapid turn-around on watertight and weather tight doors and hatches. Value engineered at the company's manufacturing centers, standard size in-stock doors and hatches ship the next day.

AdvanTec Marine's engineering and design teams wanted to create a turnkey cost effective solution to meet the urgent replacement needs their customers often expressed.

Our Client base includes North America & International Navies, Governments, Militaries and Super Yacht Builders. With a growing team of close to 300 people; we host a wide variety of engineers and technical experts that strive to excel and push the market forward.

Whether you have an emergency replacement need, or a refit that can't wait,

AdvanTec Marine's Quick-Ship program delivers high-quality door and hatch closures quickly.



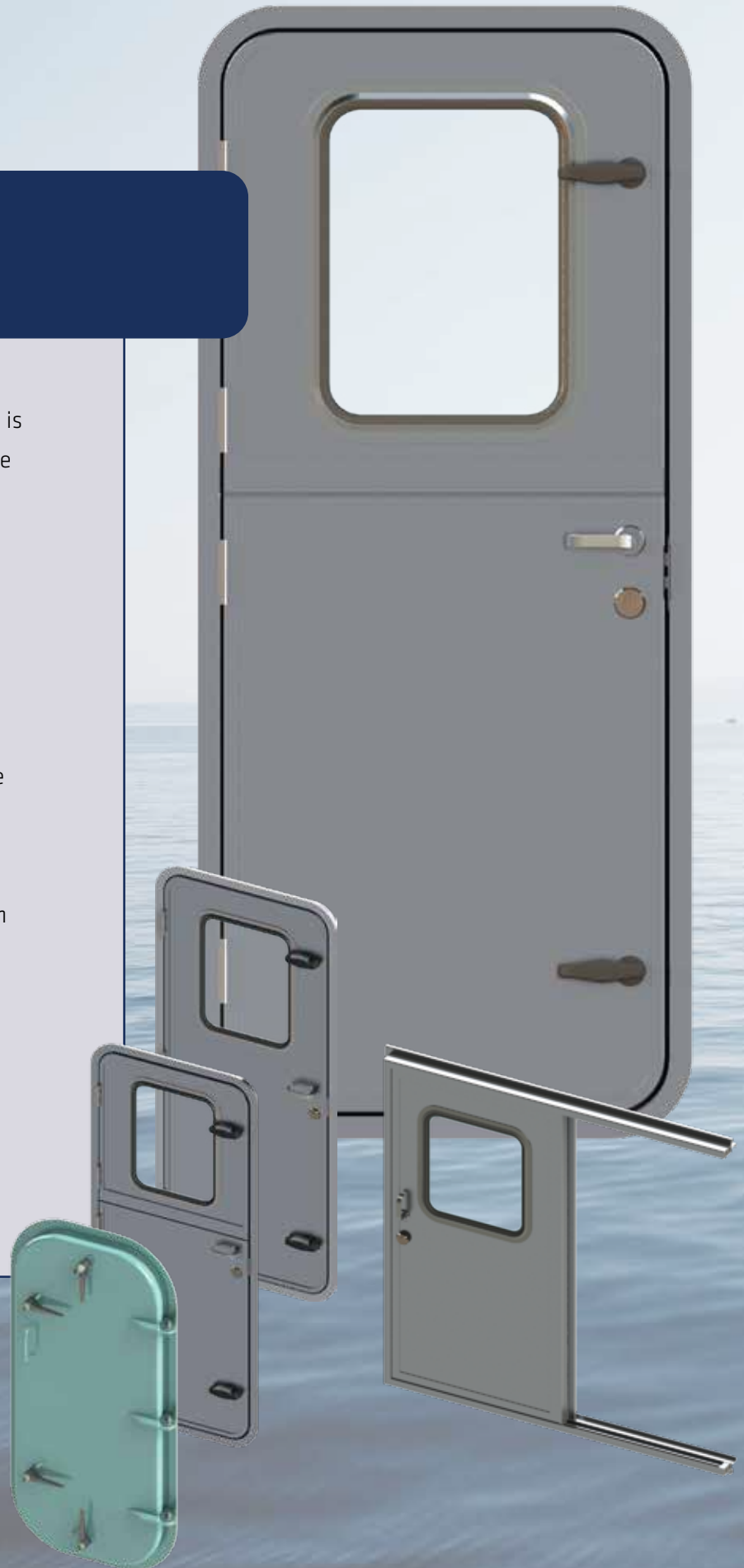
Quick-Ship Doors

The AdvanTec Marine's Quick-Ship door line is designed to withstand the rigors of offshore recreational and commercial applications.

Dependent on the model, our doors are available in hinged, dutch, and french configurations.

No blow-outs, smooth operation and excellent visibility is what boat owners have come to expect from AdvanTec Marine closures.

Our doors are used on a wide variety of yachts, fishing boats, tugs, barges, research vessels, offshore tenders, rescue craft and many more. Ruggedly built with precision working components of aluminum, steel, stainless steel, and other quality materials. Our Quick-Ship doors use the individual dogging mechanisms.



250 DOORS

250 Series Weathertight Single Door

- Marine Grade .090" Aluminum Captured Panel Skins Mill Finish
- Welded 6063 Flanged Aluminum Frame
- 4" Radius Corners
- Gasket on Frame
- Bolt-in or Weld-in Frames
- (2) Individual Nylon Dogs
- Insulation 1-1/2" Korolite Rigid Foam Core
- Stainless Steel Hinges and Fasteners



250 DOORS, DUTCH

250 Series Weathertight Dutch Door

- Marine Grade .090" Aluminum Captured Panel Skins Mill Finish
- Welded 6063 Flanged Aluminum Frame
- 4" Radius Corners
- EPDM Black Gasket on Frame
- Gasketed Joint Between Upper and Lower Panels
- Bolt-in or Weld-in Frames
- (2) Individual Nylon Dogs
- Insulation 1-1/2" Korolite Rigid Foam Core
- Stainless Steel Hinges and Fasteners



1212 DOORS

1212 Series Watertight Door

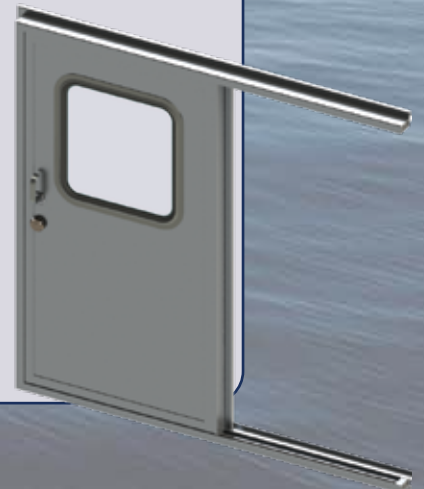
- Marine Grade Interprime 198 Red Oxide Primer Finish
- Welded Mild Steel, Radius Formed Corners
- Gasket on Door Panel for Long Life and Positive Sealing
- .25" Thick, Outside Mild Steel Panel
- (4) Individual Dogs
- (3) Welded Steel Panel Hinges
- Inside and Outside Round-bar Steel Handles
- Designed & built to withstand 4PSI internal pressure



300X SLIDING DOORS

300X Series Weathertight Single Sliding Door

- Commercial Duty Closure Designed for Offshore Use
- Marine Grade 6063 Aluminum
- Mill Finish
- Insulation Korolite Rigid Foam Core
- Tempered Window
- Trioving Lockset with 3 keys



Door Sizes

In Stock or Ready in 3 Weeks or Free Delivery in North America

250 HINGED DOOR

Part No.	Rough Opening	Handing	Window
250-H2464L	24" x 64"	LH	10" x 16"
250-H2464R	24" x 64"	RH	
250-H2466L	24" x 66"	LH	
250-H2466R	24" x 66"	RH	
250-H2472L	24" x 72"	LH	
250-H2472R	24" x 72"	RH	
250-H2664L	26" x 64"	LH	
250-H2664R	26" x 64"	RH	
250-H2666L	26" x 66"	LH	
250-H2666R	26" x 66"	RH	
250-H2672L	26" x 72"	LH	
250-H2672R	26" x 72"	RH	
250-H2678L	26" x 78"	LH	
250-H2678R	26" x 78"	RH	
250-H3066L	30" x 66"	LH	15" x 20"
250-H3066R	30" x 66"	RH	
250-H3072L	30" x 72"	LH	
250-H3072R	30" x 72"	RH	
250-H3078L	30" x 78"	LH	
250-H3078R	30" x 78"	RH	
250-H3666L	36" x 66"	LH	
250-H3666R	36" x 66"	RH	
250-H3672L	36" x 72"	LH	
250-H3672R	36" x 72"	RH	
250-H3678L	36" x 78"	LH	
250-H3678R	36" x 78"	RH	



250 DUTCH DOOR

Part No.	Rough Opening	Handing	Window
250-D2466L	24" x 64"	LH	10" x 16"
250-D2466R	24" x 64"	RH	
250-D2666L	24" x 66"	LH	
250-D2666R	24" x 66"	RH	
250-D3066L	24" x 72"	LH	
250-D3066R	24" x 72"	RH	
250-D3666L	26" x 64"	LH	
250-D3666R	26" x 64"	RH	
250-D2472L	26" x 66"	LH	
250-D2472R	26" x 66"	RH	
250-D2672L	26" x 72"	LH	
250-D2672R	26" x 72"	RH	
250-D3072L	26" x 78"	LH	
250-D3072R	26" x 78"	RH	
250-D3672L	30" x 66"	LH	15" x 20"
250-D3672R	30" x 66"	RH	
250-D2678L	30" x 72"	LH	
250-D2678R	30" x 72"	RH	
250-D3078L	30" x 78"	LH	
250-D3078R	30" x 78"	RH	
250-D3678L	36" x 66"	LH	
250-D3678R	36" x 66"	RH	
250-H3672L	36" x 72"	LH	
250-H3672R	36" x 72"	RH	
250-H3678L	36" x 78"	LH	
250-H3678R	36" x 78"	RH	



In Stock or Ready in 3 Weeks or Free Delivery in North America

1212 HINGED DOOR

Part No.	Spigot Size	Handing
1212-2460L	24" x 60"	LH
1212-2460R	24" x 60"	RH
1212-2464L	24" x 64"	LH
1212-2464R	24" x 64"	RH
1212-2466L	24" x 66"	LH
1212-2466R	24" x 66"	RH
1212-2468L	24" x 68"	LH
1212-2468R	24" x 68"	RH
1212-2660L	26" x 60"	LH
1212-2660R	26" x 60"	RH
1212-2664L	26" x 64"	LH
1212-2664R	26" x 64"	RH
1212-2666L	26" x 66"	LH
1212-2666R	26" x 66"	RH
1212-2668L	26" x 68"	LH
1212-2668R	26" x 68"	RH
1212-2860L	28" x 60"	LH
1212-2860R	28" x 60"	RH
1212-2864L	28" x 64"	LH
1212-2864R	28" x 64"	RH
1212-2866L	28" x 66"	LH
1212-2866R	28" x 66"	RH

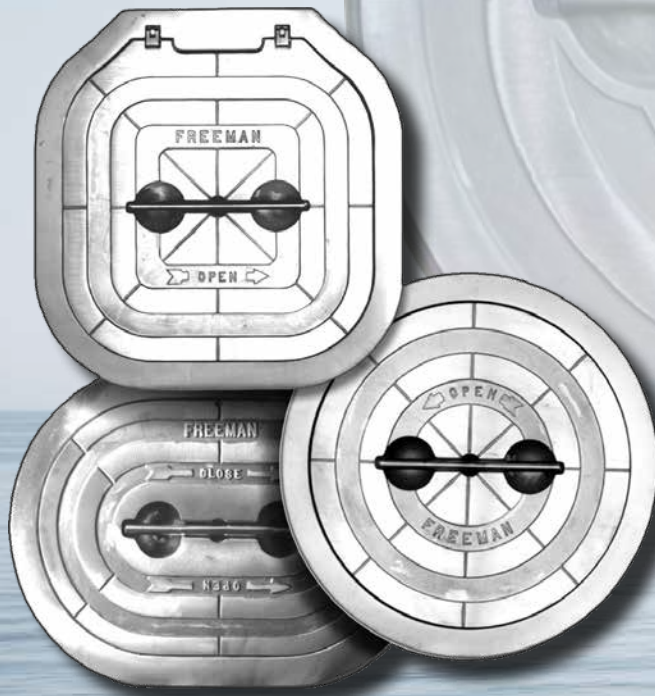


300X SLIDING DOOR

Part No.	Heel Size	Handing	Window
300X-2464L	24" x 66"	LHS	15-3/4" x 23-1/2"
300X-2464R	24" x 66"	RHS	
300X-2466L	24" x 66"	LHS	
300X-2466R	24" x 66"	RHS	
300X-2472L	24" x 72"	LHS	
300X-2472R	24" x 72"	RHS	
300X-2664L	26" x 64"	LHS	17-3/4" x 23-1/2"
300X-2664R	26" x 64"	RHS	
300X-2666L	26" x 66"	LHS	
300X-2666R	26" x 66"	RHS	
300X-2672L	26" x 72"	LHS	
300X-2672R	26" x 72"	RHS	
300X-2678L	26" x 78"	LHS	21-3/4" x 24-1/2"
300X-2678R	26" x 78"	RHS	
300X-3066L	30" x 66"	LHS	
300X-3066R	30" x 66"	RHS	
300X-3072L	30" x 72"	LHS	
300X-3072R	30" x 72"	RHS	
300X-3078L	30" x 78"	LHS	27-3/4" x 24-1/2"
300X-3078R	30" x 78"	RHS	
300X-3666L	36" x 66"	LHS	
300X-3666R	36" x 66"	RHS	
300X-3672L	36" x 72"	LHS	
300X-3672R	36" x 72"	RHS	
300X-3678L	36" x 78"	LHS	
300X-3678R	36" x 78"	RHS	



Quick-Ship Hatch Sizes



QUICK-SHIP HATCHES

Sizes below are in-stock configurations,
ready in 1 week or free delivery in North America

Part No	Model	Shape	Style	Ring	Clear Opening		Rough Opening*		Overall		Weight	
					(in)	(mm)	(in)	(mm)	(in)	C (mm)	Lbs	Kgs
2401-0002	8	Round	Lift-Out	A-C	8.0	203.2	10.4	265	12.2	310	8	4
2406-0002	20	Round	Lift-Out	A-C	20.0	508.0	22.7	575.5	26.5	674	37	17
2406-0003	20	Round	Lift-Out	S-C	20.0	507.9	22.5	571.5	22.5	571.5	44	20
2433-0002	1524	Oval	Lift-Out	A-C	15.0 x 24.0	381.0 x 609.6	17.7 x 26.7	450.0 x 677.0	21.3 x 30.2	544.0 x 768.0	35	16
2433-0003	1524	Oval	Lift-Out	S-C	15.0 x 24.0	381.0 x 610.0	17.5 x 26.5	445.0 x 673.0	17.5 x 26.5	445.0 x 673.0	37	17
2473-0002	1524	Oval	Hinged	A-C	15.0 x 24.0	381.0 x 610.0	17.8 x 26.7	451.0 x 678.0	23.4 x 30.6	594.0 x 777.0	37	17
2473-0003	1524	Oval	Hinged	S-C	15.0 x 24.0	381.0 x 610.0	17.4 x 26.5	443.0 x 673.0	19.7 x 26.5	500.0 x 673.0	40	18
2424-0002	2424	Square	Lift-Out	A-K	24.6 x 24.6	625.0 x 625.0	27.5 x 27.5	697.0 x 697.0	31.2 x 31.2	792.5 x 792.5	57	26
2424-0003	2424	Square	Lift-Out	S-K	24.0 x 24.0	610.0 x 610.0	27.4 x 27.4	695.0 x 695.0	27.4 x 27.4	695.0 x 695.0	74	33
2464-0002	2424	Square	Hinged	A-K	24.0 x 24.0	610.0 x 610.0	27.5 x 27.5	698.0 x 698.0	31.2 x 33.1	792.0 x 840.7	57	26
2464-0003	2424	Square	Hinged	S-K	24.0x24.0	610.0 x 610.0	27.4 x 27.4	695.0 x 695.0	29.6 x 27.4	752.0 x 695.0	65	29

*does not include hinge pockets

North American Distributors

UNITED STATES

PACIFIC COAST

Englund Marine
CA, OR, WA
englundmarine.com

Fisheries Supply
Seattle, WA
fisheriessupply.com

LFS Marine & Outdoor
WA, AK
go2marine.com

MEI Industrial Hardware
Pittsburg, CA
meiindustrialhardware.com

Icon International, Inc
Los Angeles, CA
vilterwebexpress.com

GULF COAST

Byrne, Rice & Turner
New Orleans, LA
brtmarine.com

Timco Industries
Houston, TX
timcomarine.com

GREAT LAKES

Timco Industries
New Albany, IN
timcomarine.com

EAST COAST

Hamilton Marine
Maine
hamiltonmarine.com

Sea Gear Marine Supply
Cape May NJ
seagearmarine.com

Navalex International, Inc.
Miami, FL
navalex.com

APB - All Points Boats
Ft. Luaderdale, FL
APB1.com

CANADA

PACIFIC COAST

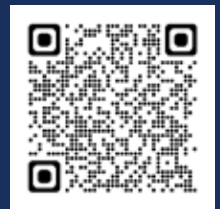
Western Marine
Vancouver, Canada
westernmarine.com

EAST COAST

Maritime Marine Supply
New Glasgow, NS
maritimemarinesupply.ca

Hydraunav
Quebec, Canada
hydraunav.com

Mercer Marine
Clarenceville, NL
mercersmarine.com



Scan to View
Distributor
Detail Page

World Wide Distributors

Asia Marine Equipments Corp.
Kaohsiung City, Taiwan (R.O.C.)
asiamarine.com.tw

Baitra Accesorios Navales
Pontevedra, Spain
baitra.com

Bovik Marin AB
Frolunda, Sweden
bovikmarin.se

Halyard
Wimborne, United Kingdom
meiindustrialhardware.com

Kent Marine Equipment
Saint Herblain, France
kent-marine.com

Lankhorst Taselaar BV
Heerenveen, the Netherlands
lankhorst-tasselaar.nl

Leif H Strom AS
Frogner, Norway
stroem.no

Motocraft SA
Athens, Greece
motocraft.gr

Neva Marine
Tuzla, Istanbul
nevamarine.com

Pharo Marine Outfittings
Rome, Italy
pharo.it

So-Pac Marine
Auckland, New Zealand
sopac.co.nz

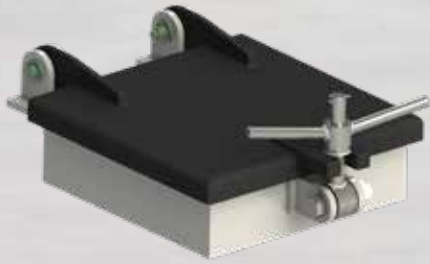
Taylor Marine
Henderson, Australia
taylormarine.com.au

Freeman Marine is a leading manufacturer of high-quality custom aluminum castings for various marine and civil engineering projects. Freeman Marine has an extensive aluminum foundry that can produce complex and precise castings in different sizes and shapes, using state-of-the-art equipment and techniques. Freeman Marine has a long history of supporting the maritime industry with its innovative and durable products, as well as the US Navy (LCAC/SSC) and the US Coast Guard (47' MLB/45' RB-m) with their various programs. Freeman Marine has also provided aluminum cast hatches for civil projects such as floating pontoon bridges, airports, and various survival compartment and water mitigation projects. Freeman Marine has the experience, the facilities, and the staff capabilities to make your project an on-time success. Whether you need standard or specialty aluminum casting, Freeman Marine can deliver the best solution for your needs

CAPABILITIES

- Full in-house casting capabilities
 - Concept, 3D design & full FEA
 - In-house patterns
 - Aluminum foundry - 535.2 or A356 ALMAG
 - Machine shop
 - ISO 9001:2015 Certified
- Lightweight, thin wall castings
- T6 Heat treatment
- Varying finish types
 - Powder coat black or white powder
 - Awlcraft 2000 wet-paint system
 - Hard-coat anodizing





VENTILATION HATCHES

- 2120-0002 10" x 10"
- 2121-0002 10" x 12"
- 2122-0002 12" x 12"

EXTERIOR VIEW



INTERIOR VIEW



CONSOLE DOOR

- Model 6101-0002 11" x 23"
- Model 6101-0004 9" x 18"
- Model 6101-0005 18" x 28"



LENS HATCH

- Quick-acting watertight
- Clear opening 25.5" x 25.5"



INTERIOR ACCESS HATCH

- Clear opening 24.3" x 24.3"
- Flush slam latch
- Neoprene gasket



CIVIL ENGINEERING HATCHES

- Floating Bridge
- Sewer & Dams
- Airport & Ports
- Commerical Buildings



FLUSH SHORE POWER HATCH

- Watertight
- Flush Weld-In
- Available sizes:
 - 9" x 15"
 - 11" x 20"



ADVANTEC ADVANTAGE



3 YEAR
HASSLE-FREE
WARRANTY

WE ARE PASSIONATE ABOUT DELIVERING

RELIABLE **SOLUTIONS**
SUPERIOR **QUALITY**
WORLD-CLASS **SUPPORT**



Proudly part of the **AdvanTec** family of brands



AdvanTec Manufacturing USA
28336 Hunter Creek Rd., Gold Beach,
OR, 97444, USA

Phone: 1.800.770.0455
Email: info@advantecmarine.com

AdvanTec Manufacturing Canada
43676 Progress Way, Chilliwack, BC,
V2R 0C3, Canada