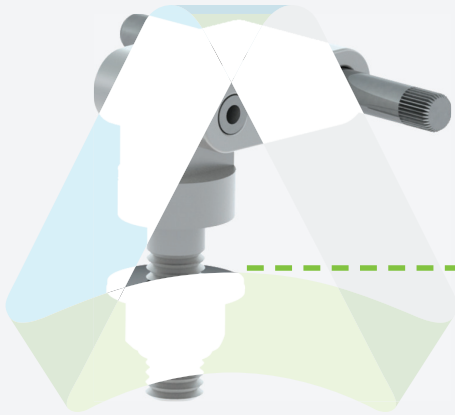
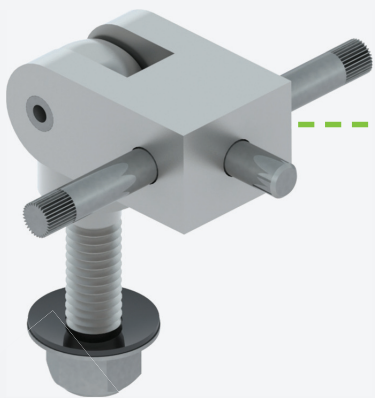
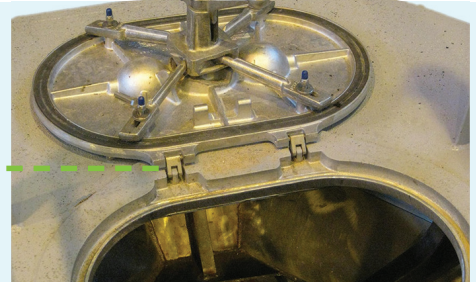


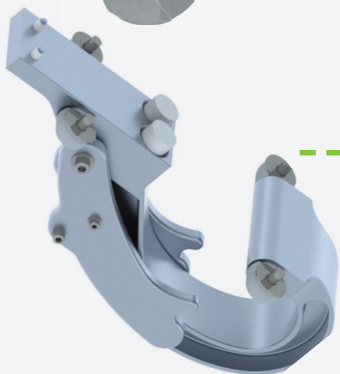
## Hinge Options



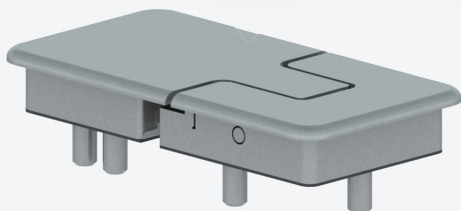
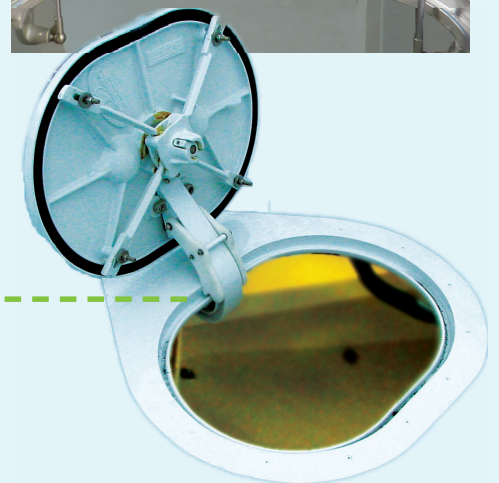
**0461-2205**  
[SS] Standard  
Hinge Assembly  
Double Acting  
Allows cover to lay flat



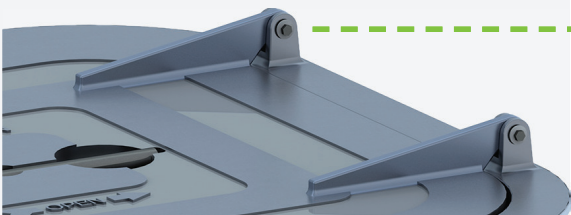
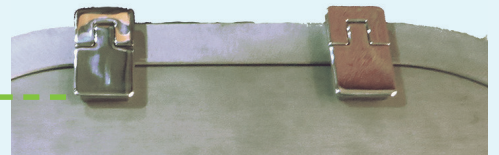
**0461-2202**  
[SS] Standard  
Hinge Assembly  
Single Pivot  
Use with hold open or  
Gas Shocks



**0461-2077**  
Yoke Hinge, Concealed  
Includes Hold Open



**0461-2171**  
[SS] 2 x 4 Hinge, Raised  
Flush with Teak



**0462-2021**  
Blade Hinge  
Use with Raised Coaming &  
Vertical Mount Hatches

