

PLEASURECRAFT

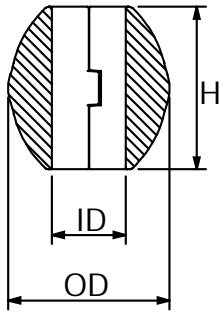
SHAFT & RUDDER ANODES

Al premium
SALT AND BRACKISH WATER ◆

Mg fresh
FRESH WATER ONLY ●

Zn traditional
SALT WATER ONLY ●

STREAMLINED SHAFT anodes / imperial



CHOOSE FROM TWO STAINLESS STEEL HARDWARE OPTIONS:



Allen head w/
lock washer &
bolt retaining
washer



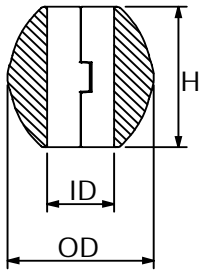
Slotted head
w/lock washer
& bolt retaining
washer

	PID	LB	KG		H	OD	ID	UPC
AL	CMX00A	0.216	0.10	mm	50	42	12	6 28309 24256 5
MG	CMX00M	0.145	0.06					6 28309 18277 9
ZN	CMX00	0.51	0.23	in	1.95	1.64	0.5	6 28309 12220 1
AL	CMX01AL	0.31	0.14	mm	51	52	19	6 28309 12752 7
MG	CMX01M	0.22	0.10					6 28309 12771 8
ZN	CMX01	0.85	0.38	in	2	2.04	0.75	6 28309 10365 1
AL	CMX018125AL	0.31	0.14	mm	50.8	51.8	20.63	6 28309 12751 0
MG	CMX018125M	0.20	0.09					Please contact us for more info
ZN	CMX01825	0.75	0.34	in	2	2.04	0.8125	6 28309 12350 5
AL	CMX02AL	0.34	0.15	mm	53	54	22.22	6 28309 12753 4
MG	CMX02M	0.25	0.11					6 28309 12772 5
ZN	CMX02	0.95	0.43	in	2.08	2.12	0.875	6 28309 10366 8
AL	CMX03AL	0.36	0.16	mm	55	55	25	6 28309 12626 1
MG	CMX03M	0.25	0.11					6 28309 11534 0
ZN	CMX03	1	0.45	in	2.15	2.16	1	6 28309 10367 5
AL	CMX04AL	0.43	0.19	mm	57	60	28.57	6 28309 12755 8
MG	CMX04M	0.3	0.13					6 28309 12773 2
ZN	CMX04	1.14	0.52	in	2.25	2.36	1.125	6 28309 10368 2
AL	CMX05AL	0.44	0.20	mm	60	61	32	6 28309 12756 5
MG	CMX05M	0.3	0.13					6 28309 11535 7
ZN	CMX05	1.17	0.53	in	2.35	2.42	1.25	6 28309 10369 9
AL	CMX05AAL	0.71	0.32	mm	62	68	32	6 28309 24257 2
MG	CMX05AM	0.47	0.21					6 28309 24386 9
ZN	CMX05A	1.75	0.79	in	2.45	2.68	1.25	6 28309 10370 5
AL	CMX06AL	0.56	0.25	mm	60	67	34.92	6 28309 12757 2
MG	CMX06M	0.38	0.17					6 28309 12774 9
ZN	CMX06	1.48	0.67	in	2.35	2.66	1.375	6 28309 10371 2
AL	CMX0625AL	0.28	0.13	mm	50.8	48.76	15.87	Please contact us for more info
MG	CMX0625M	0.17	0.08					Please contact us for more info
ZN	CMX0625	0.70	0.32	in	2	1.92	0.625	6 28309 15714 2
AL	CMX07AL	0.64	0.29	mm	63	70	38	6 28309 12758 9
MG	CMX07M	0.42	0.19					6 28309 12775 6
ZN	CMX07	1.68	0.76	in	2.5	2.78	1.5	6 28309 10372 9
AL	CMX08AL	0.95	0.43	mm	73	82	44	6 28309 12759 6
MG	CMX08M	0.60	0.27					6 28309 12776 3
ZN	CMX08	2.48	1.13	in	2.75	3.25	1.75	6 28309 10373 6

THE WORLD'S BEST SHAFT ANODE DESIGN:

- FIT & LONGEVITY
- EASY INSTALLATION UNDERWATER: BOLT RETAINING WASHERS PREVENT THE ANODE FROM FALLING OFF

STREAMLINED SHAFT anodes / imperial



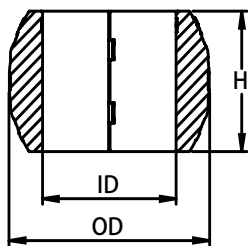
THE WORLD'S BEST SHAFT ANODE DESIGN:

- FIT & LONGEVITY
- EASY INSTALLATION UNDERWATER: BOLT RETAINING WASHERS PREVENT THE ANODE FROM FALLING OFF

	PID	LB	KG		H	OD	ID	UPC
AL	CMX09AL	1.17	0.53	mm	73	82	51	6 28309 12760 2
MG	CMX09M	0.80	0.36					6 28309 12777 0
ZN	CMX09	3.10	1.41	in	2.9	3.6	2	6 28309 10374 3
AL	CMX10AL	2.46	1.11	mm	95	106.1	57	6 28309 12761 9
MG	CMX10M	1.57	0.71					6 28309 22963 4
ZN	CMX10	6.08	2.76	in	3.75	4.18	2.25	6 28309 10375 0
AL	CMX11AL	2.14	0.97	mm	95	106.1	63	6 28309 12762 6
MG	CMX11M	1.34	0.61					6 28309 19129 0
ZN	CMX11	5.18	2.35	in	3.75	4.18	2.5	6 28309 10376 7
AL	CMX12AL	2.99	1.36	mm	92.07	121.9	70	6 28309 12763 3
MG	CMX12M	1.94	0.88					6 28309 24387 6
ZN	CMX12	7.53	3.42	in	3.625	4.8	2.75	6 28309 10377 4
AL	CMX13AL	2.66	1.21	mm	92.07	121.9	76	6 28309 12764 0
MG	CMX13M	1.69	0.77					6 28309 24388 3
ZN	CMX13	6.54	2.97	in	3.625	4.8	3	6 28309 10378 1
AL	CMX14A	2.87	1.30	mm	106	122	83	6 28309 23834 6
MG	CMX14M	1.88	0.86					6 28309 23835 3
ZN	CMX14Z	7.21	3.27	in	4.17	4.8	3.25	6 28309 23836 0
AL	CMX15AL	3.64	1.65	mm	96	141	89	6 28309 17061 5
MG	CMX15M	2.33	1.06					6 28309 24389 0
ZN	CMX15	9.03	4.10	in	3.78	5.55	3.5	6 28309 12232 4
AL	CMX17AL	3.51	1.59	mm	89	152.4	101.7	6 28309 17577 1
MG	CMX17M	2.28	1.03					6 28309 24390 6
ZN	CMX17	8.91	4.04	in	3.5	6	4.005	6 28309 12223 2
AL	CMX18AL	4.86	2.20	mm	89	171.4	114	6 28309 17579 5
MG	CMX18M	3.14	1.42					6 28309 24391 3
ZN	CMX18	12.42	5.63	in	3.5	6.75	4.5	6 28309 12793 0



STREAMLINED SHAFT *anodes / imperial*

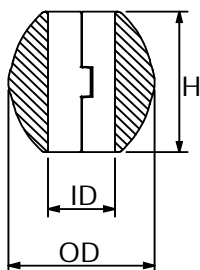


CMX10-CMX21



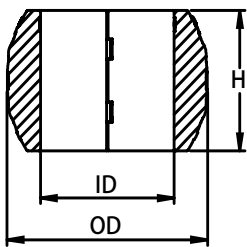
	PID	LB	KG		H	OD	ID	UPC
AL	CMX19AL	3.65	1.65	mm	89	171	127	6 28309 17580 1
MG	CMX19M	2.37	1.07					6 28309 24392 0
ZN	CMX19	9.27	4.20	in	3.5	6.75	5	6 28309 12794 7
AL	CMX20AL	6.23	2.82	mm	89	198	140	6 28309 23837 7
MG	CMX20M	4.01	1.82					6 28309 23838 4
ZN	CMX20	15.95	7.24	in	3.5	7.8	5.5	6 28309 12795 4
AL	CMX21AL	4.80	2.18	mm	89	198	152	6 28309 17582 5
MG	CMX21M	3.10	1.40					6 28309 24393 7
ZN	CMX21	12.00	5.44	in	3.5	7.8	6	6 28309 12796 1

STREAMLINED SHAFT *anodes / metric*

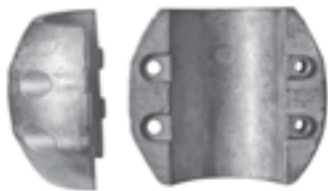


	PID	LB	KG		H	OD	ID	UPC
AL	CMXM20A	0.30	0.13	mm	48	51.2	20	6 28309 23863 6
MG	CMXM20M	0.20	0.09					6 28309 23864 3
ZN	CMXM20Z	0.73	0.33	in	1.89	2.02	0.79	6 28309 23862 9
AL	CMX22A	0.28	0.13	mm	48	51.2	22	6 28309 23840 7
MG	CMX22M	0.19	0.08					6 28309 23841 4
ZN	CMX22Z	0.69	0.31	in	1.89	2.01	0.86	6 28309 23842 1
AL	CMX25AL	0.48	0.21	mm	55	61	25	6 28309 12765 7
MG	CMX25M	0.31	0.14					6 28309 24394 4
ZN	CMX25	1.21	0.55	in	2.17	2.40	1	6 28309 10379 8
AL	CMX28AL	0.51	0.23	mm	56	61	28	6 28309 23843 8
MG	CMX28M	0.33	0.15					6 28309 23844 5
ZN	CMX28	1.28	0.58	in	2.20	2.40	1.10	6 28309 23845 2
AL	CMX30AL	0.48	0.22	mm	61	61	30	6 28309 12766 4
MG	CMX30M	0.31	0.14					6 28309 12778 7
ZN	CMX30	1.21	0.55	in	2.40	2.40	1.18	6 28309 10380 4
AL	CMX34AL	0.68	0.31	mm	65	70	34	6 28309 21521 7
MG	CMX34M	0.44	0.20					6 28309 21522 4
ZN	CMX34	1.73	0.79	in	2.60	2.75	1.34	6 28309 22962 7
AL	CMX35AL	0.63	0.28	mm	65	70	35	6 28309 12767 1
MG	CMX35M	0.41	0.18					6 28309 12779 4
ZN	CMX35	1.61	0.73	in	2.62	2.75	1.38	6 28309 10381 1
AL	CMX40AL	1.22	0.55	mm	73	84	40	6 28309 12768 8
MG	CMX40M	0.78	0.35					6 28309 12780 0
ZN	CMX40	3.152	1.43	in	2.87	3.30	1.57	6 28309 10382 8

STREAMLINED SHAFT anodes / metric

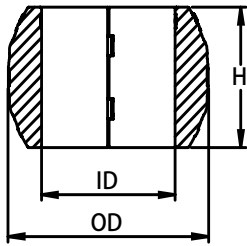


CMX55-CMX125



	PID	LB	KG		H	OD	ID	UPC
AL	CMX45AL	1.08	0.49	mm	73	84	45	6 28309 12769 5
MG	CMX45M	0.69	0.31					6 28309 12781 7
ZN	CMX45	2.78	1.26					in
AL	CMX50AL	0.92	0.42	mm	73	84	50	6 28309 12770 1
MG	CMX50M	0.59	0.27					6 28309 12782 4
ZN	CMX50	2.37	1.07					in
AL	CMX55AL	2.41	1.09	mm	90	105	55	6 28309 19282 2
MG	CMX55M	1.59	0.72					6 28309 22964 1
ZN	CMX55	6.03	2.73					in
AL	CMX60A	2.34	1.06	mm	95.25	106.17	60	6 28309 19335 5
MG	CMX60M	1.47	0.67					6 28309 19343 0
ZN	CMX60	5.70	2.59					in
AL	CMX65A	3.13	1.42	mm	90	120	65	6 28309 19336 2
MG	CMX65M	2.04	0.92					6 28309 19344 7
ZN	CMX65	7.89	3.58					in
AL	CMX70A	3.04	1.38	mm	100	120	70	6 28309 19337 9
MG	CMX70M	2.01	0.91					6 28309 19345 4
ZN	CMX70	7.68	3.48					in
AL	CMX75A	3.5	1.58	mm	100	125	75	6 28309 19338 6
MG	CMX75M	2.3	1.04					6 28309 19346 1
ZN	CMX75	8.9	4.03					in
AL	CMX80A	3.65	1.65	mm	100	130	80	6 28309 19340 9
MG	CMX80M	2.41	1.09					6 28309 19347 8
ZN	CMX80	9.18	4.16					in
AL	CMX85A	2.66	1.21	mm	106	122	85	6 28309 19339 3
MG	CMX85M	1.74	0.79					6 28309 19348 5
ZN	CMX85Z	6.70	3.04					in
AL	CMX90A	4.32	1.96	mm	110	144	90	6 28309 19341 6
MG	CMX90M	2.84	1.29					6 28309 19349 2
ZN	CMX90	10.84	4.92					in
AL	CMX95A	3.88	1.76	mm	110	144	95	6 28309 19342 3
MG	CMX95M	2.56	1.16					6 28309 19350 8
ZN	CMX95Z	9.70	4.40					in

STREAMLINED SHAFT anodes / metric

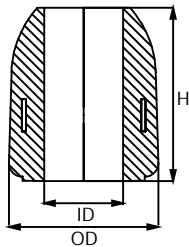


CMX55-CMX125

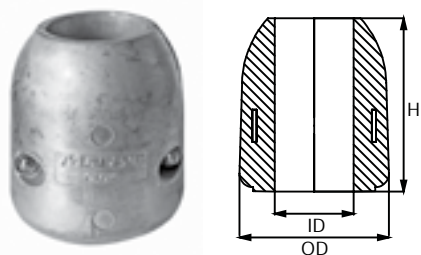


	PID	LB	KG		H	OD	ID	UPC
AL	CMX100AL	4.47	2.03	mm	100	150	100	6 28309 19243 3
MG	CMX100M	2.92	1.32					6 28309 19244 0
ZN	CMX100	11.3	5.12	in	3.94	5.83	3.93	6 28309 12829 6
AL	CMX110A	11.15	5.06	mm	160	180	110	6 28309 23819 3
MG	CMX110M	7.14	3.24					6 28309 23820 9
ZN	CMX110	28.79	13.06	in	6.30	7.09	4.33	6 28309 12831 9
AL	CMX115A	10.67	4.84	mm	160	180	115	6 28309 23822 3
MG	CMX115M	6.83	3.10					6 28309 23823 0
ZN	CMX115Z	27.47	12.46	in	6.30	7.09	4.53	6 28309 12832 6
AL	CMX120A	9.35	4.24	mm	160	180	120	6 28309 23825 4
MG	CMX120M	5.99	2.72					6 28309 23826 1
ZN	CMX120Z	24.05	10.91	in	6.30	7.09	4.72	6 28309 23827 8
AL	CMX123A	8.86	4.02	mm	160	180	123	6 28309 23828 5
MG	CMX123M	5.7	2.59					6 28309 23829 2
ZN	CMX123Z	22.7	10.34	in	6.30	7.09	4.84	6 28309 23830 8
AL	CMX125A	8.42	3.82	mm	160	180	125	6 28309 23831 5
MG	CMX125M	5.47	2.48					6 28309 23832 2
ZN	CMX125Z	21.82	9.90	in	6.30	7.09	4.92	6 28309 23833 9

CLAMP SHAFT anodes / imperial



	PID	LB	KG		H	OD	ID	UPC
AL	CMXC01A	0.65	0.29	mm	65	56	19	6 28309 18009 6
MG	CMXC01M	0.42	0.19					6 28309 24398 2
ZN	CMXC01Z	1.66	0.76	in	2.54	2.19	0.75	6 28309 17485 9
AL	CMXC02A	0.62	0.28	mm	65	56	22	6 28309 18010 2
MG	CMXC02M	0.39	0.18					6 28309 24399 9
ZN	CMXC02Z	1.57	0.71	in	2.54	2.19	0.87	6 28309 17488 0
AL	CMXC03A	0.57	0.26	mm	65	56	25	6 28309 18011 9
MG	CMXC03M	0.35	0.16					6 28309 19600 4
ZN	CMXC03Z	1.46	0.66	in	2.54	2.19	1	6 28309 17491 0
AL	CMXC04A	0.53	0.24	mm	65	56	29	6 28309 18012 6
MG	CMXC04M	0.34	0.15					6 28309 24400 2
ZN	CMXC04Z	1.35	0.61	in	2.54	2.19	1.12	6 28309 17494 1
AL	CMXC05A	1.05	0.48	mm	78	70	32	6 28309 18013 3
MG	CMXC05M	0.67	0.30					6 28309 24401 9
ZN	CMXC05Z	2.67	1.21	in	3.05	2.7	1.25	6 28309 17497 2



Comes with slotted head w/lock washer & bolt retaining washer.



INTERNAL STEEL CLAMP INSERT HOLDS THE ANODE COMPLETELY TIGHT TO THE SHAFT



- ENGINEERED TO ENSURE COMPLETE SHAFT CONTACT:**
- CLAMP INSERT ENSURES TIGHT FIT TO SHAFT FOR DURATION OF LIFE
 - STAINLESS STEEL HARDWARE AND LOCK WASHERS INCLUDED
 - BOLT RETAINING WASHERS PREVENT THE ANODE FROM FALLING OFF - EASY INSTALLATION UNDERWATER

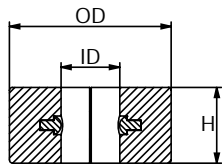


CLAMP SHAFT *anodes / imperial*

PID		LB	KG		H	OD	ID	UPC	
AL	CMXC06A	0.98	0.44	mm	78	70	35	6	28309 18014 0
MG	CMXC06M	0.63	0.29					6	28309 24402 6
ZN	CMXC06Z	2.50	1.13	in	3.05	2.7	1.37	6	28309 17500 9
AL	CMXC07A	0.90	0.41	mm	78	70	38	6	28309 18015 7
MG	CMXC07M	0.56	0.25					6	28309 24403 3
ZN	CMXC07Z	2.30	1.04	in	3.05	2.7	1.5	6	28309 17503 0
AL	CMXC08A	2.06	0.93	mm	100	85	45	6	28309 18016 4
MG	CMXC08M	1.31	0.59					6	28309 24404 0
ZN	CMXC08Z	5.25	2.39	in	3.92	3.33	1.75	6	28309 17506 1
AL	CMXC09A	1.80	0.82	mm	100	85	51	6	28309 18017 1
MG	CMXC09M	1.15	0.52					6	28309 24405 7
ZN	CMXC09Z	4.60	2.09	in	3.92	3.33	2	6	28309 17509 2

CLAMP SHAFT *anodes / metric*

PID		LB	KG		H	OD	ID	UPC	
AL	CMXC25A	0.59	0.27	mm	65	56	25	6	28309 18018 8
MG	CMXC25M	0.38	0.17					6	28309 24406 4
ZN	CMXC25Z	1.50	0.67	in	2.5	2.2	1	6	28309 17512 2
AL	CMXC30A	0.51	0.23	mm	65	56	30	6	28309 18019 5
MG	CMXC30M	0.33	0.15					6	28309 24407 1
ZN	CMXC30Z	1.30	0.59	in	2.5	2.2	1.19	6	28309 17515 3
AL	CMXC35A	0.98	0.44	mm	78	69	35	6	28309 18020 1
MG	CMXC35M	0.63	0.29					6	28309 24408 8
ZN	CMXC35Z	2.50	1.13	in	3	2.74	1.37	6	28309 17518 4
AL	CMXC40A	0.85	0.39	mm	78	69	40	6	28309 18021 8
MG	CMXC40M	0.54	0.24					6	28309 24409 5
ZN	CMXC40Z	2.16	0.98	in	3	2.74	1.58	6	28309 17521 4
AL	CMXC45A	2.04	0.93	mm	100	85	45	6	28309 18022 5
MG	CMXC45M	0.19	0.09					6	28309 24410 1
ZN	CMXC45Z	5.20	2.36	in	4	3.33	1.75	6	28309 17524 5
AL	CMXC50A	1.84	0.83	mm	100	85	50	6	28309 18023 2
MG	CMXC50M	1.18	0.54					6	28309 24411 8
ZN	CMXC50Z	4.70	2.13	in	4	3.33	2	6	28309 17527 6
AL	CMXC60A	1.36	0.62	mm	100	85	60	6	28309 18024 9
MG	CMXC60M	0.87	0.39					6	28309 24412 5
ZN	CMXC60Z	3.48	1.58	in	4	3.33	2.33	6	28309 17530 6
AL	CMXC70A	2.57	1.17	mm	96	113	70	6	28309 18025 6
MG	CMXC70M	1.61	0.73					6	28309 24413 2
ZN	CMXC70Z	6.43	2.92	in	3.75	4.43	2.75	6	28309 17533 7



LIMITED CLEARANCE SHAFT *anodes / imperial*

	PID	LB	KG		H	OD	ID	UPC
AL	CMC01AL	0.26	0.12	mm	25	54	19	6 28309 19154 2
MG	CMC01M	0.21	0.10	in	1	2.12	0.75	6 28309 24302 9
ZN	CMC01	0.66	0.3	in	1	2.12	0.75	6 28309 10303 3
AL	CMC02AL	0.25	0.11	mm	25	54	22	6 28309 19155 9
MG	CMC02M	0.20	0.09	in	1	2.12	0.87	6 28309 24303 6
ZN	CMC02	0.64	0.29	in	1	2.12	0.87	6 28309 10304 0
AL	CMC03AL	0.47	0.21	mm	32	63	25	6 28309 17058 5
MG	CMC03M	0.38	0.17	in	1.25	2.5	1	6 28309 15991 7
ZN	CMC03	1.21	0.55	in	1.25	2.5	1	6 28309 10305 7
AL	CMC04AL	0.43	0.20	mm	32	63	28	6 28309 19156 6
MG	CMC04M	0.35	0.16	in	1.25	2.5	1.12	6 28309 24304 3
ZN	CMC04	1.10	0.50	in	1.25	2.5	1.12	6 28309 10306 4
AL	CMC05AL	0.45	0.21	mm	32	63	32	6 28309 17059 2
MG	CMC05M	0.35	0.16	in	1.25	2.5	1.25	6 28309 15992 4
ZN	CMC05	1.15	0.52	in	1.25	2.5	1.25	6 28309 10307 1
AL	CMC06AL	0.63	0.29	mm	32	76	35	6 28309 17060 8
MG	CMC06M	0.52	0.24	in	1.25	3	1.37	6 28309 15993 1
ZN	CMC06	1.61	0.73	in	1.25	3	1.37	6 28309 10308 8
AL	CMC07AL	0.58	0.26	mm	32	76	38	6 28309 19157 3
MG	CMC07M	0.48	0.22	in	1.25	3	1.5	6 28309 22977 1
ZN	CMC07	1.48	0.67	in	1.25	3	1.5	6 28309 10309 5
AL	CMC08AL	0.89	0.40	mm	35	89	44	6 28309 19158 0
MG	CMC08M	0.73	0.33	in	1.37	3.5	1.75	6 28309 24305 0
ZN	CMC08Z	2.27	1.03	in	1.37	3.5	1.75	6 28309 10310 1
AL	CMC09AL	0.82	0.37	mm	35	89	51	6 28309 10312 5
MG	CMC09M	0.67	0.30	in	1.37	3.5	2	6 28309 24307 4
ZN	CMC09	2.08	0.95	in	1.37	3.5	2	6 28309 10311 8
AL	CMC09AAL	0.69	0.31	mm	35	89	57	6 28309 19160 3
MG	CMC09AM	0.57	0.26	in	1.37	3.5	2.25	6 28309 24306 7
ZN	CMC09A	1.76	0.80	in	1.37	3.5	2.25	6 28309 19159 7
AL	CMC12AL	2.12	0.96	mm	38	127	63	6 28309 10314 9
MG	CMC12M	1.74	0.79	in	1.5	5	2.5	6 28309 24311 1
ZN	CMC12	5.40	2.45	in	1.5	5	2.5	6 28309 10313 2
AL	CMC12AAL	2.03	0.92	mm	38	127	70	6 28309 19162 7
MG	CMC12AM	1.67	0.76	in	1.5	5	2.75	6 28309 24310 4
ZN	CMC12A	5.18	2.35	in	1.5	5	2.75	6 28309 19161 0
AL	CMC13AL	1.90	0.86	mm	38	127	76	6 28309 19163 4
MG	CMC13M	1.57	0.71	in	1.5	5	3	6 28309 24312 8
ZN	CMC13	4.85	2.2	in	1.5	5	3	6 28309 10315 6
AL	CMC14AL	2.22	1.00	mm	38	165	89	6 28309 19164 1
MG	CMC14M	1.83	0.83	in	1.5	6.5	3.5	6 28309 24313 5
ZN	CMC14	5.66	2.57	in	1.5	6.5	3.5	6 28309 10316 3

EASY INSTALLATION UNDER-WATER: BOLT RETAINING WASHERS PREVENT THE ANODE FROM FALLING OFF
CHOOSE FROM TWO OF OUR STAINLESS STEEL HARDWARE OPTIONS:

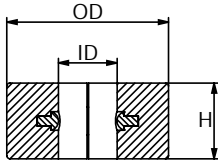


Allen head w/ lock washer & bolt retaining washer

Slotted head w/ lock washer & bolt retaining washer

FULL SHAFT CONTACT: 100% CIRCULAR RADIUS INTERLOCKING HALVES EXTRA ALLOY AROUND FASTENER





EASY INSTALLATION UNDER-WATER: BOLT RETAINING WASHERS PREVENT THE ANODE FROM FALLING OFF

CHOOSE FROM TWO OF OUR STAINLESS STEEL HARDWARE OPTIONS:

- Allen head w/ lock washer & bolt retaining washer
- Slotted head w/lock washer & bolt retaining washer



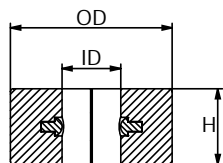
LIMITED CLEARANCE SHAFT anodes / imperial

	PID	LB	KG		H	OD	ID	UPC
AL	CMC15AL	3.14	1.42	mm	38	165	101	6 28309 19165 8
MG	CMC15M	2.58	1.17					6 28309 24314 2
ZN	CMC15	8.00	3.63	in	1.5	6.5	4	6 28309 10317 0

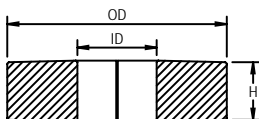
LIMITED CLEARANCE SHAFT anodes / metric

	PID	LB	KG		H	OD	ID	UPC
AL	CMC20AL	2.73	1.24	mm	25	54	20	6 28309 18987 7
MG	CMC20M	2.25	1.02					6 28309 18997 6
ZN	CMC20	6.96	3.16	in	1	2.12	0.75	6 28309 11533 3
AL	CMC25AL	0.27	0.12	mm	32	63	25	6 28309 18989 1
MG	CMC25M	0.22	0.10					6 28309 18999 0
ZN	CMC25	0.68	0.31	in	1.25	2.5	1	6 28309 11524 1
AL	CMC30AL	0.42	0.19	mm	32	63	30	6 28309 18988 4
MG	CMC30M	0.35	0.16					6 28309 18998 3
ZN	CMC30	1.08	0.49	in	1.25	2.5	1.18	6 28309 11525 8
AL	CMC35AL	0.47	0.21	mm	32	76	35	6 28309 19166 5
MG	CMC35M	0.39	0.18					6 28309 24315 9
ZN	CMC35	1.21	0.55	in	1.25	3	1.38	6 28309 11526 5
AL	CMC40AL	0.60	0.27	mm	32	76	40	6 28309 19167 2
MG	CMC40M	0.49	0.22					6 28309 21038 0
ZN	CMC40	1.52	0.69	in	1.25	3	1.57	6 28309 11527 2
AL	CMC45A	1.05	0.48	mm	35	89	45	6 28309 24192 6
MG	CMC45M	0.87	0.39					6 28309 24317 3
ZN	CMC45	2.69	1.22	in	1.37	3.5	1.77	6 28309 11528 9
AL	CMC50A	1.05	0.48	mm	35	89	50	6 28309 24193 3
MG	CMC50M	0.87	0.39					6 28309 24319 7
ZN	CMC50	2.69	1.22	in	1.37	3.5	2	6 28309 11529 6
AL	CMC55A	1.23	0.56	mm	29	114	55	6 28309 23577 2
MG	CMC55M	0.81	0.37					6 28309 23578 9
ZN	CMC55Z	3.12	1.42	in	1.14	4.49	2.17	6 28309 23579 6
AL	CMC60A	1.26	0.57	mm	29	120	60	6 28309 24194 0
MG	CMC60M	1.04	0.47					6 28309 24320 3
ZN	CMC60	3.22	1.46	in	1.14	4.72	2.36	6 28309 12834 0
AL	CMC65A	1.36	0.62	mm	29	125	65	6 28309 23580 2
MG	CMC65M	0.90	0.41					6 28309 23581 9
ZN	CMC65Z	3.43	1.56	in	1.14	4.92	2.56	6 28309 23582 6
AL	CMC70A	1.44	0.65	mm	29	130	70	6 28309 24197 1
MG	CMC70M	1.18	0.54					6 28309 24323 4
ZN	CMC70	3.66	1.66	in	1.14	5.12	2.76	6 28309 12836 4
AL	CMC75A	1.50	0.68	mm	29	135	75	6 28309 24198 8
MG	CMC75M	1.24	0.56					6 28309 24324 1
ZN	CMC75	3.83	1.74	in	1.14	5.31	2.95	6 28309 12837 1

LIMITED CLEARANCE SHAFT *anodes / metric*



	PID	LB	KG		H	OD	ID	UPC
AL	CMC80A	1.56	0.71	mm	29	140	80	6 28309 24199 5
MG	CMC80M	1.29	0.59					6 28309 24325 8
ZN	CMC80	3.99	1.81	in	1.14	5.51	3.15	6 28309 12838 8
AL	CMC85A	2.40	1.09	mm	32	153	85	6 28309 23583 3
MG	CMC85M	1.56	0.71					6 28309 23584 0
ZN	CMC85Z	6.12	2.78	in	1.25	6	3.35	6 28309 23585 7
AL	CMC90A	3.45	1.56	mm	40	170	90	6 28309 24200 8
MG	CMC90M	2.85	1.29					6 28309 24326 5
ZN	CMC90	8.81	4.00	in	1.57	6.69	3.54	6 28309 12840 1
AL	CMC95A	3.24	1.47	mm	40	170	95	6 28309 23586 4
MG	CMC95M	2.10	0.95					6 28309 23587 1
ZN	CMC95Z	8.27	3.76	in	1.57	6.69	3.74	6 28309 23588 8
AL	CMC100A	3.71	1.68	mm	40	180	100	6 28309 24190 2
MG	CMC100M	3.06	1.39					6 28309 24308 1
ZN	CMC100	9.47	4.30	in	1.57	7.09	3.94	6 28309 12842 5
AL	CMC120A	5.62	2.55	mm	40	220	120	6 28309 24191 9
MG	CMC120M	4.63	2.10					6 28309 24309 8
ZN	CMC120	14.32	6.50	in	1.57	8.66	4.72	6 28309 12846 3



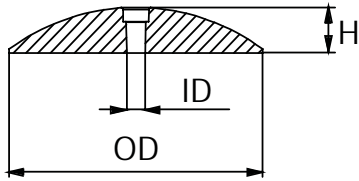
EURO STYLE LIMITED CLEARANCE SHAFT *anodes*

	PID	LB	KG		H	OD	ID	UPC
AL	CMC22EUROA	0.19	0.08	mm	15.5	60	22	6 28309 19459 8
MG	CMC22EUROM	0.12	0.05					6 28309 21216 2
ZN	CMC22EURO	0.49	0.22	in	0.6	2.36	0.87	6 28309 16000 5
AL	CMC25EUROA	0.19	0.08	mm	15.5	60	25	6 28309 19460 4
MG	CMC25EUROM	0.12	0.05					6 28309 21217 9
ZN	CMC25EURO	0.49	0.22	in	0.6	2.36	1	6 28309 16001 2
AL	CMC30EUROA	0.19	0.08	mm	15.5	60	30	6 28309 19461 1
MG	CMC30EUROM	0.12	0.05					6 28309 21033 5
ZN	CMC30EURO	0.49	0.22	in	0.6	2.36	1.12	6 28309 16002 9
AL	CMC35EUROA	0.31	0.14	mm	18	74	35	6 28309 19462 8
MG	CMC35EUROM	0.20	0.09					6 28309 21035 9
ZN	CMC35EURO	0.79	0.36	in	0.7	3	1.37	6 28309 16003 6
AL	CMC40EUROA	0.27	0.12	mm	18	74	40	6 28309 19463 5
MG	CMC40EUROM	0.18	0.08					6 28309 21037 3
ZN	CMC40EURO	0.70	0.32	in	0.7	3	1.5	6 28309 16004 3
AL	CMC45EUROA	0.32	0.15	mm	18	82	45	6 28309 19464 2
MG	CMC45EUROM	0.20	0.09					6 28309 24316 6
ZN	CMC45EURO	0.82	0.37	in	0.7	3.25	1.75	6 28309 16005 0
AL	CMC50EUROA	0.27	0.12	mm	18	82	50	6 28309 19465 9
MG	CMC50EUROM	0.18	0.08					6 28309 24318 0
ZN	CMC50EURO	0.70	0.32	in	0.7	3.25	2.2	6 28309 16006 7

THIN EURO STYLE COLLAR ANODES:
EASY INSTALLATION UNDERWATER: BOLT RETAINING WASHERS PREVENT THE ANODE FROM FALLING OFF

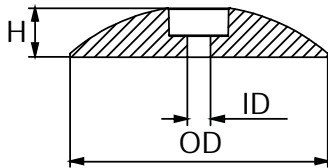


Comes with allen head bolt w/lock washer & bolt retaining washer



RUDDER ANODES ARE SOLD IN PAIRS, WITH STAINLESS STEEL BOLT AND NUT

EASY INSTALLATION UNDERWATER: BOLT RETAINING WASHERS PREVENT THE ANODE FROM FALLING OFF



SOLD IN SINGLE HALF ONLY

RUDDER/TRIM TAB anodes

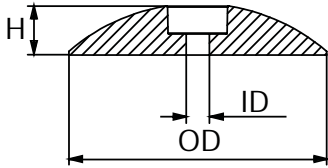
	PID	LB	KG		H	OD	ID	UPC
AL	CMR01AL	0.10	0.05	mm	6	47	5	6 28309 12783 1
MG	CMR01M	0.07	0.03					6 28309 12787 9
ZN	CMR01	0.28	0.13	in	0.35	1.87	0.2	6 28309 10350 7
AL	CMR02AL	0.34	0.16	mm	12	71	7	6 28309 12784 8
MG	CMR02M	0.23	0.10					6 28309 11536 4
ZN	CMR02	0.94	0.43	in	0.5	2.81	0.28	6 28309 10352 1
AL	CMR03AL	0.56	0.37	mm	12	95	9	6 28309 12785 5
MG	CMR03M	0.39	0.18					6 28309 12788 6
ZN	CMR03	1.60	0.73	in	0.5	3.75	0.34	6 28309 10354 5
AL	CMR04AL	1.13	0.51	mm	16	127	9	6 28309 12786 2
MG	CMR04M	0.78	0.36					6 28309 12791 6
ZN	CMR04	3.21	1.46	in	0.65	5	0.34	6 28309 10355 2
AL	CMR05AL	1.65	0.75	mm	22	130	9	6 28309 18272 4
MG	CMR05M	1.14	0.52					6 28309 12792 3
ZN	CMR05	4.70	2.14	in	0.87	5.12	0.37	6 28309 10356 9
AL	CMR07AL	3.64	1.66	mm	22	175	8	6 28309 22976 4
MG	CMR07M	2.48	1.13					6 28309 23317 4
ZN	CMR07	9.35	4.25	in	0.87	6.87	0.32	6 28309 10357 6

EURO STYLE RUDDER/TRIM TAB anodes

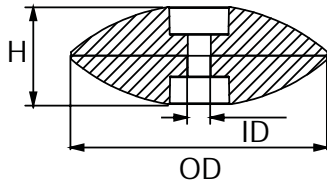
	PID	LB	KG		H	OD	ID	UPC
AL	CMF50A	0.06	0.03	mm	11	50	7	6 28309 19263 1
MG	CMF50M	0.04	0.02					6 28309 21190 5
ZN	CMF50Z	0.17	0.08	in	0.41	2	0.26	6 28309 17468 2
AL	CMF70A	0.14	0.06	mm	13	70	9	6 28309 19264 8
MG	CMF70M	0.09	0.04					6 28309 21191 2
ZN	CMF70Z	0.40	0.18	in	0.5	2.75	0.35	6 28309 17470 5
AL	CMF90A	0.32	0.15	mm	17	90	9	6 28309 19265 5
MG	CMF90M	0.21	0.10					6 28309 21192 9
ZN	CMF90Z	0.91	0.42	in	0.66	3.5	0.35	6 28309 17472 9
AL	CMF110A	0.51	0.23	mm	19	110	11	6 28309 19261 7
MG	CMF110M	0.34	0.15					6 28309 21189 9
ZN	CMF110Z	1.44	0.65	in	0.75	4.33	0.42	6 28309 17462 0
AL	CMF120A	0.66	0.30	mm	20	120	11	6 28309 24204 6
MG	CMF120M	0.43	0.20					6 28309 24330 2
ZN	CMF120Z	1.87	0.85	in	0.79	4.72	0.43	6 28309 24124 7
AL	CMF125A	0.74	0.34	mm	21	125	11	6 28309 19262 4
MG	CMF125M	0.49	0.22					6 28309 23234 4
ZN	CMF125Z	2.10	0.95	in	0.83	5	0.45	6 28309 17464 4
AL	CMF128A	0.77	0.35	mm	22	128	12	6 28309 24205 3
MG	CMF128M	0.50	0.23					6 28309 24331 9
ZN	CMF128Z	2.16	0.98	in	0.87	5.04	0.47	6 28309 24125 4



EURO STYLE RUDDER/TRIM TAB anodes

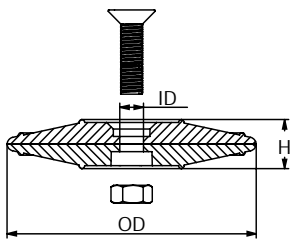


	PID	LB	KG		H	OD	ID	UPC
AL	CMF140A	1.15	0.52	mm	26	140	13	6 28309 21030 4
MG	CMF140M	0.77	0.35					6 28309 23235 1
ZN	CMF140Z	3.26	1.48	in	1	5.5	0.5	6 28309 17466 8
AL	CMF190A	1.94	0.88	mm	29	190	13	6 28309 24206 0
MG	CMF190M	1.29	0.55					6 28309 24332 6
ZN	CMF190Z	5.48	2.49	in	1.14	7.5	0.5	6 28309 24127 8



	PID	LB	KG		H	OD	ID	UPC
AL	CMF50CA	0.12	0.06	mm	22	50	7	6 28309 24672 3
ZN	CMF50CZ	0.34	0.16	in	0.82	2	0.26	6 28309 24658 7
AL	CMF70CA	0.28	0.12	mm	26	70	9	6 28309 24673 0
ZN	CMF70CZ	0.80	0.36	in	1.02	2 3/4	0.35	6 28309 24659 4
AL	CMF90CA	0.64	0.3	mm	34	90	9	6 28309 24674 7
ZN	CMF90CZ	1.82	0.84	in	1.33	3 1/2	0.35	6 28309 24660 0
AL	CMF110CA	1.02	0.46	mm	38	110	11	6 28309 26004 0
ZN	CMF110CZ	2.88	1.3	in	1.5	4 1/3	0.42	6 28309 24679 2
AL	CMF125CA	1.48	0.68	mm	42	125	11	6 28309 24666 2
ZN	CMF125CZ	4.2	1.9	in	1.66	5	0.45	6 28309 24654 9
AL	CMF140CA	2.3	1.04	mm	52	140	13	6 28309 26005 7
ZN	CMF140CZ	6.52	2.96	in	2	5 1/2	0.5	6 28309 25981 5

Sold as two halves,
assembled with a zip tie



SPANISH STYLE RUDDER/TRIM TAB anodes



	PID	LB	KG		H	OD	ID	UPC
AL	CMF70SPA	0.211	0.096	mm	15	70	8.5	6 28309 23625 0
MG	CMF70SPM	0.147	0.067					6 28309 23626 7
ZN	CMF70SPZ	0.494	0.224	in	0.59	2.75	0.33	6 28309 23627 4
AL	CMF90SPA	0.401	0.182	mm	17.4	90	8.5	6 28309 23628 1
MG	CMF90SPM	0.267	0.121					6 28309 23629 8
ZN	CMF90SPZ	0.987	0.448	in	0.68	3.54	0.33	6 28309 23630 4
AL	CMF130SPA	0.941	0.427	mm	20	130	8.5	6 28309 23622 9
MG	CMF130SPM	0.610	0.277					6 28309 23623 6
ZN	CMF130SPZ	2.40	1.088	in	0.78	5.12	0.33	6 28309 23624 3