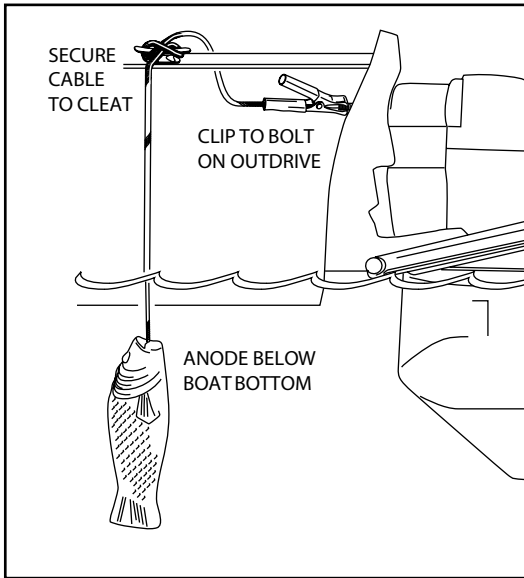


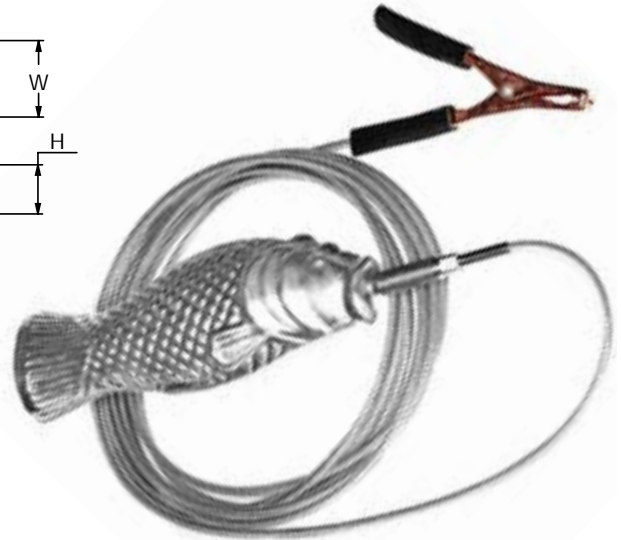
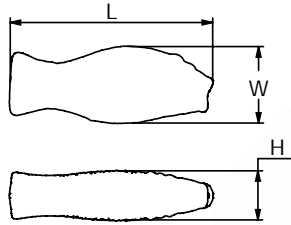
# **PLEASURECRAFT**

## **HULL ANODES**

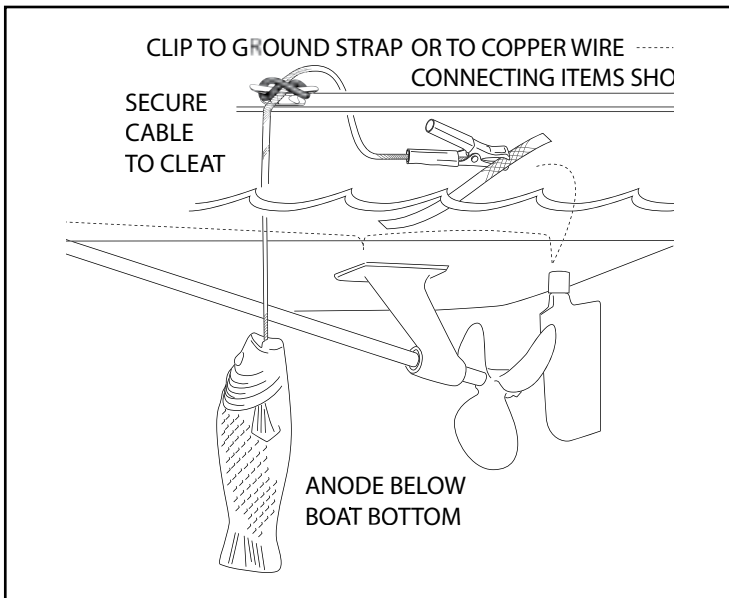
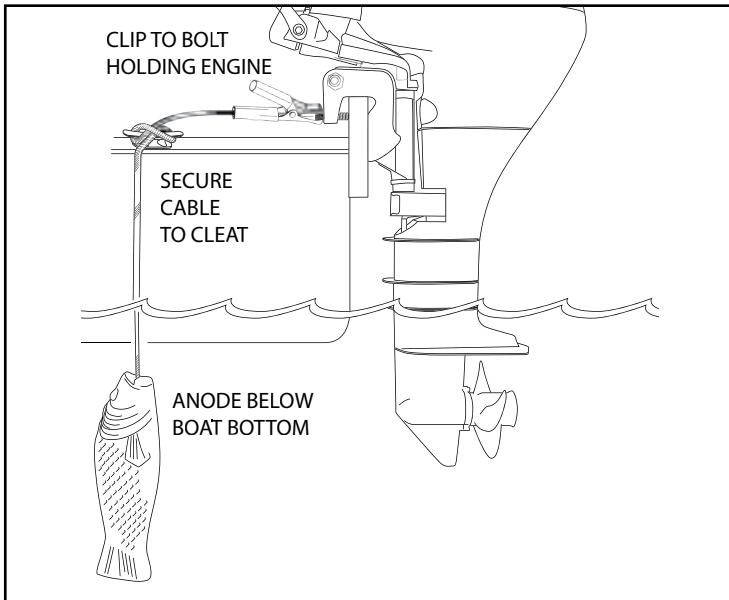
## GROUPEUR



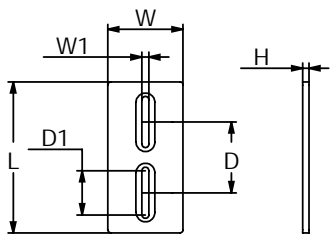
	PID	LB	KG		L	W	H	UPC
AL	CMGROUPEA	2.64	1.20	mm	195.6	74.2	48.1	6 28309 12219 5
MG	CMGROUPERM	1.89	0.86					6 28309 12368 0
ZN	CMGROUPERZ	5.88	2.67	in	7.70	2.92	1.89	6 28309 10514 3



**\* IMPORTANT\* Do not connect to battery**



### BONDING KIT / hardware included



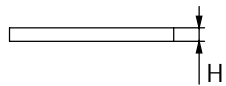
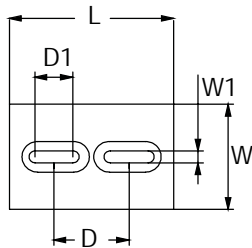
	PID	LB	KG		L	W	W1	H	D	D1	UPC
AL	CMDIVERBONDA	4	1.82	mm	305	152	13	13	140	89	6 28309 12284 3
				in	12	6	0.5	0.5	5.5	3.5	

*Please Note: It is strongly recommended that this anode kit be installed by a certified marine technician.*

*Legal Disclaimer: CMP is not liable for any damages resulting from improper installation of this kit and its contents.*



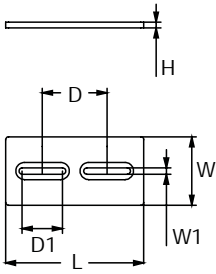
### DIVER'S DREAM



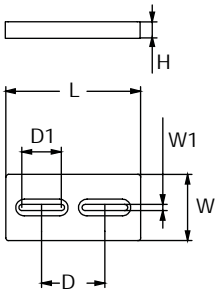
	PID	LB	KG		L	W	H	D	D1	W1	UPC
AL	CMDIVERMINIA	0.87	0.40	mm	150	99	13	69	35	11	6 28309 12375 8
MG	CMDIVERMINIM	0.68	0.31								6 28309 11506 7
ZN	CMDIVERMINIZ	2.25	1.02	in	5.9	3.9	0.5	2.7	1.36	0.44	6 28309 11338 4



## DIVER'S DREAM

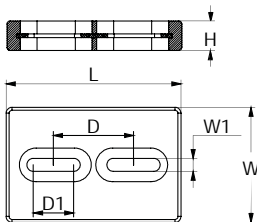
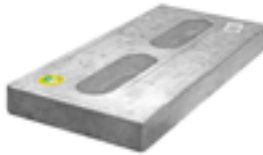


	PID	LB	KG		L	W	H	D	D1	W1	UPC
AL	CMDIVERA	3.25	1.48	mm	304	152	13	140	89	13	6 28309 10183 1
MG	CMDIVERM	2.50	1.14								6 28309 11507 4
ZN	CMDIVERZ	8.00	3.6	in	12	6	0.5	5.5	3.5	0.5	6 28309 11365 0



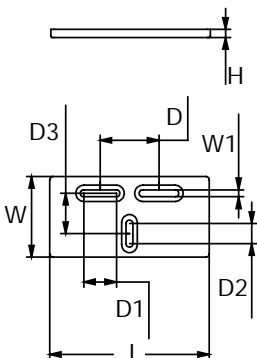
	PID	LB	KG		L	W	H	D	D1	W1	UPC
AL	CMDIVERHA	6.12	2.78	mm	304	152	25	140	89	13	6 28309 18990 7
MG	CMDIVERHM	4.46	2.03								6 28309 19000 2
ZN	CMDIVERHZ	14.52	6.60	in	12	6	1	5.5	3.5	0.5	6 28309 18981 5

**DOUBLE THE WEIGHT OF CMDIVER**



	PID	LB	KG		L	W	H	D	D1	W1	UPC
AL	CMDIVERMINIHA	1.96	0.89	mm	5.9	3.9	1.0	2.7	1.36	0.44	6 28309 24694 5
MG	CMDIVERMINIHM	1.37	0.62								6 28309 24695 2
ZN	CMDIVERMINIHZ	4.65	2.11	in	19.35	12.79	3.28	8.85	4.46	1.44	6 28309 24693 8

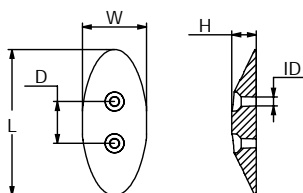
**Bolt-On DiverMini Heavy Plate**  
**DOUBLE THE WEIGHT OF CMDIVERMINI**



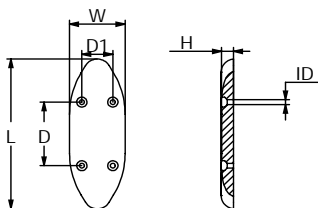
	PID	LB	KG		L	W	W1	H	D	D1	D2	D3	UPC
AL	CMZ10A	4.00	1.81	mm	304	152	13	13	114	64	36	76	6 28309 19152 8
MG	CMZ10M	3.10	1.41										6 28309 19247 1
ZN	CMZ10Z	9.90	4.50	in	12	6	0.5	0.6	1.5	2.5	1.42	3	6 28309 13020 6



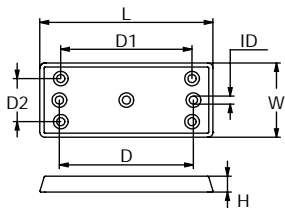
### HULL anodes



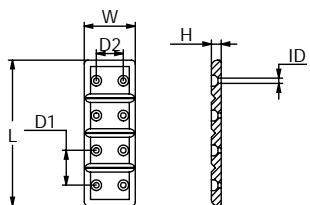
	PID	LB	KG		L	W	H	D	ID	UPC
AL	CMM24A	0.21	0.09	mm	111	49	18	32	6	6 28309 12376 5
MG	CMM24M	0.13	0.06							6 28309 24353 1
ZN	CMM24Z	0.53	0.24	in	4.36	1.92	0.7	1.25	0.25	6 28309 10679 9



	PID	LB	KG		L	W	H	D	D1	ID	UPC
AL	CMM25A	1.52	0.69	mm	231	83	18	98	46	7	6 28309 12377 2
MG	CMM25M	0.98	0.44								6 28309 24354 8
ZN	CMM25Z	3.92	1.78	in	9.08	3.25	0.72	3.86	1.81	0.29	6 28309 10680 5

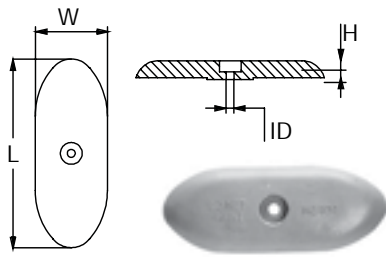


	PID	LB	KG		L	W	H	ID	D	D1	D2	UPC
AL	CMM30A	0.74	0.34	mm	152	68	14	6	121	117	40	6 28309 12378 9
MG	CMM30M	0.48	0.22									6 28309 24355 5
ZN	CMM30Z	1.9	0.86	in	6	2.67	0.56	0.25	4.75	4.63	1.58	6 28309 10681 2

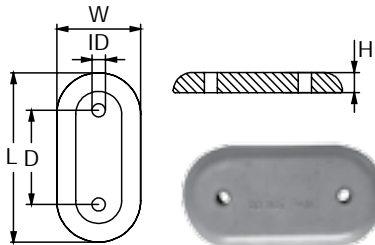


	PID	LB	KG		L	W	H	D1	D2	ID	UPC
AL	CMM40A	0.81	0.37	mm	186	66	13	44	35	7	6 28309 12379 6
MG	CMM40M	0.52	0.26								6 28309 24356 2
ZN	CMM40Z	2.08	0.95	in	7.3	2.6	0.5	1.75	1.38	0.25	6 28309 10682 9

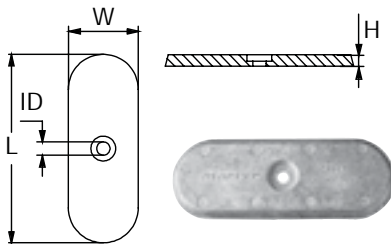
## HULL anodes



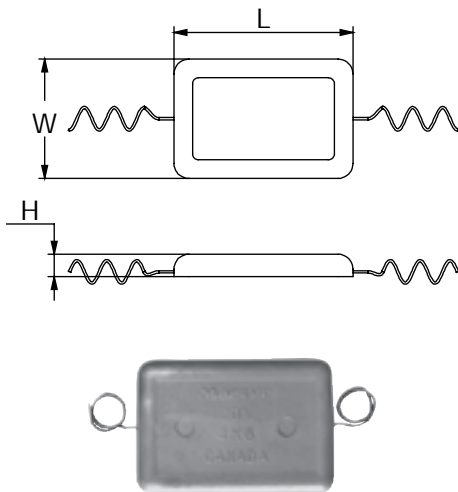
	PID	LB	KG		L	W	H	ID	UPC
AL	CMMZ404A	1.33	0.60	mm	224	86	19	10	6 28309 12380 2
MG	CMMZ404M	0.86	0.39						6 28309 18507 7
ZN	CMMZ404Z	3.42	1.55	in	8.8	3.38	0.75	0.38	6 28309 11339 1



	PID	LB	KG		L	W	H	D	ID	UPC
AL	CMMZC406A	2.62	1.19	mm	229	112	25	127	13	6 28309 12381 9
MG	CMMZC406M	1.69	0.77							6 28309 17620 4
ZN	CMMZC406Z	6.75	3.07	in	9	4.4	1	5	0.5	6 28309 11340 7



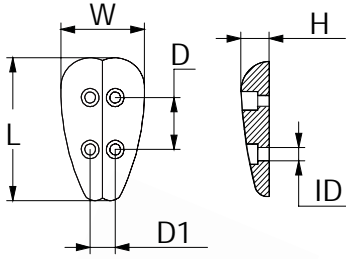
	PID	LB	KG		L	W	H	ID	UPC
AL	CMN1A	1.01	0.46	mm	216	80	13	10	6 28309 12347 5
MG	CMN1M	0.78	0.35						6 28309 24357 9
ZN	CMN1Z	2.60	1.19	in	8.5	3.16	0.5	0.41	6 28309 12348 2



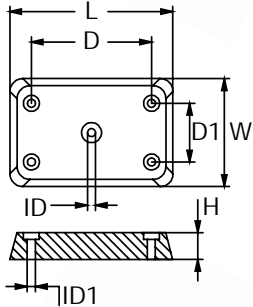
	PID	LB	KG		L	W	H	UPC
AL	CPMWA	0.78	0.35	mm	114	64	17	6 28309 12558 5
MG	CPMWM	0.60	0.27					6 28309 24363 0
ZN	CPMWZ	2.00	0.91	in	4.5	2.5	0.65	6 28309 11266 0
AL	CPNWA	1.26	0.57	mm	152	76	19	6 28309 12559 2
MG	CPNWM	0.97	0.44					6 28309 24374 6
ZN	CPNWZ	3.25	1.48	in	6	3	0.75	6 28309 11268 4
AL	CMPOWA	1.70	0.77	mm	152	102	19	6 28309 12560 8
MG	CMPOWM	1.15	0.52					6 28309 24376 0
ZN	CMPOWZ	4.38	1.99	in	6	4	0.75	6 28309 11270 7
AL	CPPPWA	0.81	0.37	mm	229	127	20	6 28309 12561 5
MG	CPPPWM	0.55	0.25					6 28309 24377 7
ZN	CPPPWZ	2.08	0.95	in	9	5	0.8	6 28309 11272 1



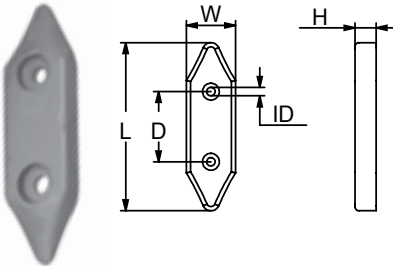
## HULL anodes



	PID	LB	KG		L	W	W1	H	D	D1	UPC
AL	CMAC073A	0.39	0.18	mm	110	67	21	39	27	6	6 28309 23532 1
MG	CMAC073M	0.24	0.11								6 28309 23533 8
ZN	CMAC073Z	1.10	0.50	in	4.3	2.6	0.8	1.54	1.1	0.22	6 28309 23534 5

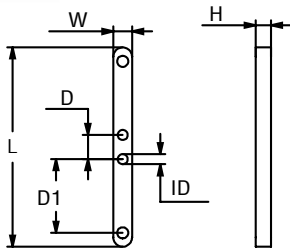


	PID	LB	KG		L	W	H	D	D1	ID	ID1	UPC
AL	CMPO029A	0.86	0.39	mm	122	81	20	69	35	9	6	6 28309 24246 6
MG	CMPO029M	0.54	0.24									6 28309 24375 3
ZN	CMPO029Z	2.20	1.00	in	4.8	3.2	0.8	2.7	1.38	0.33	0.24	6 28309 24143 8



	PID	LB	KG		L	W	H	D	ID	UPC
ZN	CMCH006Z	0.40	0.18	mm	120	35	10	51	7	6 28309 23600 7
				in	4.7	1.4	0.4	2	0.28	

CHRYSLER SERIES



	PID	LB	KG		L	W	H	D	D1	UPC
ZN	CMZH470Z	4.30	1.95	mm	395	37	30	48	145	6 28309 24153 7
				in	15.5	1.5	1.2	1.9	5.7	

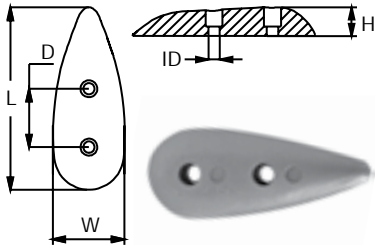
Zinc plate for fast hulls



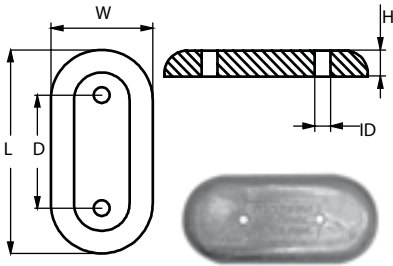
	PID	LB	KG		L	W	H	UPC
ZN	CMZH058Z			mm	910	45	12	6 28309 24152 0
				in	35.7	1.7	0.5	
ZN	CMZH058NZ			mm	900	50	12	6 28309 24151 3
				in	35.7	1.9	0.5	

Zinc plate for hydrofoil and fast hulls

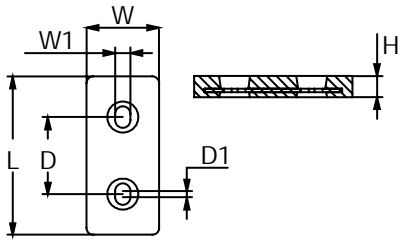
## HULL anodes



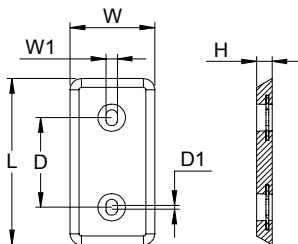
	PID	LB	KG		L	W	H	D	ID	UPC
AL	CMT20A	0.15	0.07	mm	86	46	15	33	6	6 28309 12398 7
MG	CMT20M	0.10	0.05						6	6 28309 12191 4
ZN	CMT20Z	0.38	0.17	in	3.4	1.8	0.6	1.28	0.25	6 28309 10358 3
AL	CMT21A	0.39	0.18	mm	129	51	21	41	8	6 28309 12396 3
MG	CMT21M	0.26	0.12						6	6 28309 24385 2
ZN	CMT21Z	1.00	0.45	in	5	2	0.8	1.63	0.31	6 28309 10358 3



	PID	LB	KG		L	W	H	D	ID	UPC
AL	CMZ24BSA	8.94	4.06	mm	356	159	32	127	13	6 28309 12563 9
MG	CMZ24BSM	5.75	2.61						6	6 28309 24414 9
ZN	CMZ24BSZ	23.00	10.44	in	14	6.25	1.25	5	0.5	6 28309 12482 3



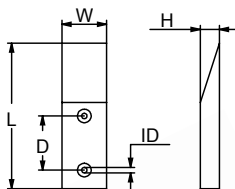
	PID	LB	KG		L	W	W1	H	D	D1	UPC
AL	CMZHC2A	0.85	0.39	mm	146	64	13	19	71	6	6 28309 11401 5
MG	CMZHC2M	0.55	0.25							6	6 28309 17625 9
ZN	CMZHC2Z	2.19	0.99	in	5.75	2.65	0.5	0.75	2.78	0.25	6 28309 11225 7



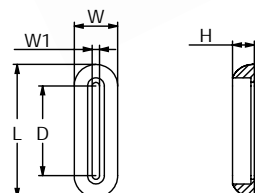
	PID	LB	KG		L	W	W1	H	D	D1	UPC
AL	CMZHC5AA	1.80	0.81	mm	203	102	14	19	110	6	6 28309 12312 3
MG	CMZHC5AM	1.18	0.53							6	6 28309 24421 7
ZN	CMZHC5AZ	4.68	2.12	in	8	4	0.55	0.76	4.35	0.23	6 28309 11228 8



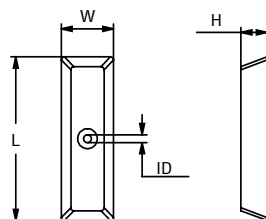
## HULL anodes



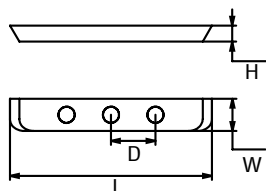
	PID	LB	KG		L	W	H	D	ID	UPC
AL	CMPL505A	1.76	0.80	mm	210	70	25	80	18	6 28309 23771 4
MG	CMPL505M	1.25	0.57							6 28309 23772 1
ZN	CMPL505Z	4.08	1.85	in	8.27	2.76	0.98	3.1	0.71	6 28309 23773 8



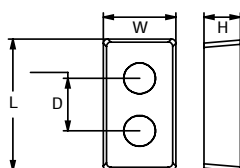
	PID	LB	KG		L	W	W1	H	D	UPC
AL	SGFL501A	1.46	0.66	mm	200	65	12	35	98	6 28309 19119 1
MG	SGFL501M	1.06	0.48							6 28309 19134 4
ZN	SGFL501Z	2.91	1.32	in	7.9	1.6	1	2.4	3.85	6 28309 18113 0



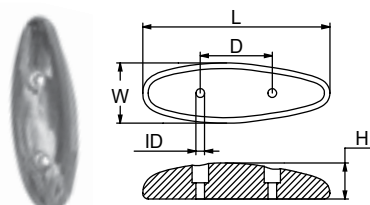
	PID	LB	KG		L	W	H	UPC	
ZN	CMZH479Z	10.10	4.60	mm	245	80	40	6	28309 24154 4
				in	9.6	3.1	1.6		



	PID	LB	KG		L	W	H	D	UPC
ZN	CMZH494Z	20.30	9.20	mm	500	80	40	160	6 28309 23851 3
				in	19.6	3.1	1.6	6.3	



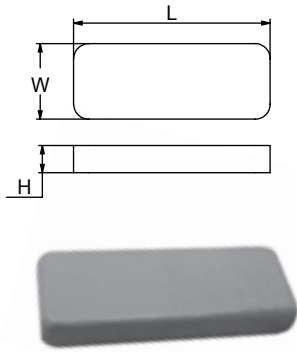
	PID	LB	KG		L	W	H	D	UPC
ZN	CMZH504Z	5.95	2.70	mm	150	80	40	60	6 28309 24155 1
				in	5.9	3.1	1.6	2.4	



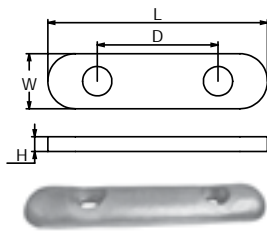
	PID	LB	KG		L	W	H	D	ID	UPC
AL	SGAO072A	0.42	0.19	mm	130	41	25	50	6	6 28309 22489 9
MG	SGAO072M	0.26	0.12							6 28309 22722 7
ZN	SGAO072Z	1.10	0.50	in	5.12	1.63	0.97	1.97	0.24	6 28309 21769 3



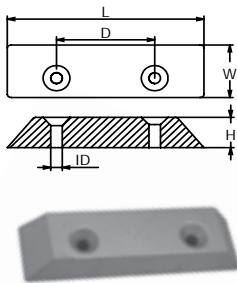
## HULL anodes



	PID	LB	KG		L	W	H	UPC
AL	CMFL075A	Please contact us for more info		mm	130	50	18	6 28309 24573 3
MG	CMFL075M							6 28309 24612 9
ZN	CMFL075Z	1.54	0.70	in	5.12	1.97	0.71	6 28309 24463 7
ZN	CMFL074Z	3.31	1.50	mm	150	70	20	6 28309 24462 0
				in	5.91	2.76	0.79	
ZN	CMFL076Z	2.43	1.10	mm	110	70	20	6 28309 24465 1
				in	4.33	2.76	0.79	
ZN	CMRF104Z	16.76	7.60	mm	300	150	25	6 28309 24480 4
				in	11.8	5.91	1	
ZN	CMZH480Z	14.11	6.40	mm	300	150	20	6 28309 24571 9
				in	11.8	5.91	0.79	

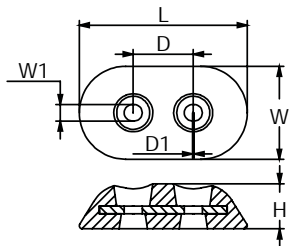


	PID	LB	KG		L	W	D	H	UPC
ZN	CMSH505Z	15.4	7	mm	450	90	230	40	6 28309 24564 1
				in	17.7	3.54	9.06	1.57	
ZN	70.SH.0514	154	7	mm	455	95	230	55	Please contact us for more info
				in	17.91	3.74	9.06	2.16	



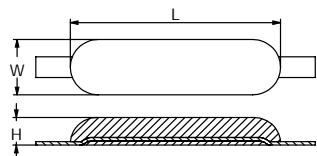
	PID	LB	KG		L	W	H	D	ID	UPC
AL	SGPL356A	0.37	0.17	mm	120	34	20	60	7	6 28309 18340 0
MG	SGPL356M	0.24	0.11							6 28309 18391 2
ZN	SGPL356Z	0.88	0.40	in	4.72	1.34	0.79	2.36	0.28	6 28309 18290 8
AL	SGPL576A	0.59	0.27	mm	175	34	20	100	7	6 28309 18343 1
MG	SGPL576M	0.37	0.17							6 28309 18394 3
ZN	SGPL576Z	1.44	0.66	in	6.89	1.34	0.79	3.94	0.28	6 28309 18293 9

### HULLanodes

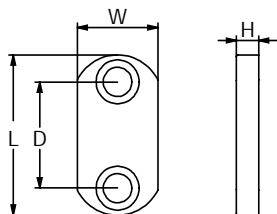


	PID	LB	KG		L	W	W1	D	D1	H	UPC
AL	SGPL355A	0.75	0.34	mm	115	65	11	40	1	30	6 28309 18339 4
MG	SGPL355M	0.55	0.25								6 28309 18390 5
ZN	SGPL355Z	1.52	0.69	in	4.53	2.56	0.43	1.57	0.04	1.18	6 28309 18289 2

	PID	LB	KG		L	W	D	H	ID	UPC
AL	SGPL573A	2.20	1	mm	175	90	80	25	13	6 28309 18342 4
MG	SGPL573M	1.54	0.7							6 28309 18393 6
ZN	SGPL573Z	4.85	2.2	in	6.9	3.54	3.15	1	0.51	6 28309 18292 2
AL	SGPL572A	3.44	1.56	mm	200	110	130	30	14	6 28309 18341 7
MG	SGPL572M	2.20	1							6 28309 18392 9
ZN	SGPL572Z	7.96	3.61	in	7.87	4.33	5.12	1.18	0.55	6 28309 18291 5



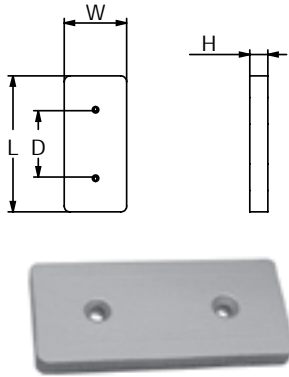
	PID	LB	KG		L	W	H	UPC
AL	SGSH16A	4.94	2.24	mm	300	80	40	6 28309 22624 4
MG	SGSH16M	3.53	1.60					6 28309 22844 6
ZN	SGSH16Z	11.22	5.09	in	11.8	3.15	1.57	6 28309 22293 2
AL	SGSH25A	8.07	3.66	mm	320	147	40	6 28309 22625 1
MG	SGSH25M	5.51	2.50					6 28309 22845 3
ZN	SGSH25Z	19.38	8.79	in	12.6	5.79	1.57	6 28309 22294 9



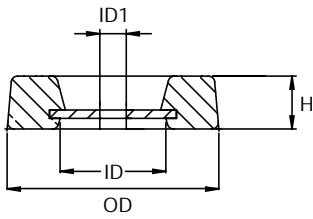
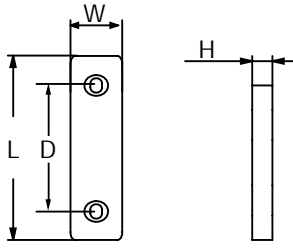
	PID	LB	KG		L	W	H	D	UPC
ZN	SGVT070	1.98	0.90	mm	147	60	25	80	6 28309 18212 0
AL	SGVT070AL			in	5.79	2.36	1	3.15	6 28309 18224 3
ZN	SGVT507	5.73	2.60	mm	290	53	30	200	6 28309 18214 4
				in	11.4	2.1	1.18	7.87	
ZN	SGVT240	5.07	2.30	mm	250	62	30	140	6 28309 18213 7
				in	9.84	2.44	1.18	5.51	

	PID	LB	KG		L	W	H	D	UPC
ZN	SGVT695	11.02	5.00	mm	350	75	35	200	6 28309 18316 5
				in	13.8	3	1.4	7.87	

## HULL anodes



	PID	LB	KG		L	W	H	D	UPC
AL	CMPL078A		0.12	mm	100	50	10	50	6 28309 24584 9
MG	CMPL078M		0.08						6 28309 24623 5
ZN	CMPL078Z	0.70	0.32	in	3.94	1.97	0.39	1.97	6 28309 24473 6
ZN	CMPL419Z	6.17	2.80	mm	200	100	20	110	6 28309 24478 1
				in	7.87	3.94	0.79	4.33	
AL	CMPL400A	1.28	0.58	mm	150	60	25	80	6 28309 24587 0
MG	CMPL400M	0.92	0.42						6 28309 24626 6
ZN	CMPL400Z	2.78	1.26	in	5.90	2.36	0.98	3.15	6 28309 24476 7
AL	CMPL401A	1.96	0.89	mm	180	75	25	115	6 28309 24588 7
MG	CMPL401M	1.41	0.64						6 28309 24627 3
ZN	CMPL401Z	4.49	2.04	in	7.08	2.95	0.98	4.53	6 28309 24477 4
AL	CMPL378A	0.70	0.32	mm	120	50	20	75	6 28309 24586 3
MG	CMPL378M	0.55	0.25						6 28309 24625 9
ZN	CMPL378Z	1.36	0.62	in	4.72	1.97	0.79	2.95	6 28309 24475 0
AL	CMFL075FA	0.59	0.27	mm	130	50	18	77	6 28309 23136 1
MG	CMFL075FM	0.37	0.17						6 28309 23137 8
ZN	CMFL075FZ	1.54	0.70	in	5.12	1.97	0.71	3.03	6 28309 23135 4
AL	CMFL076FA	0.88	0.4	mm	110	70	20	40	6 28309 24575 7
MG	CMFL076FM	0.62	0.28						6 28309 24613 6
ZN	CMFL076FZ	2.00	0.91	in	4.33	2.75	0.79	1.57	6 28309 24464 4
AL	CMPL357A	2.09	0.95	mm	220	60	30	160	6 28309 24585 6
MG	CMPL357M	1.32	0.60						6 28309 24624 2
ZN	CMPL357Z	5.47	2.48	in	8.66	2.36	1.18	6.29	6 28309 24474 3
ZN	CMFL465Z	3.31	1.50	mm	145	67	20	70	6 28309 23657 1
				in	5.71	2.64	0.79	2.76	
AL	CMPL574A	1.49	0.68	mm	190	55	25	75	6 28309 24590 0
MG	CMPL574M	1.04	0.47						6 28309 24629 7
ZN	CMPL574Z	3.44	1.56	in	7.48	2.16	0.98	2.95	6 28309 24479 8
ZN	CMZH054Z	11.02	5.00	mm	300	80	28	180	6 28309 24566 5
				in	11.8	3.15	1.1	7.09	
ZN	CMRF484Z	17.64	8.00	mm	300	150	25	160	6 28309 24481 1
				in	11.8	5.91	1	6.3	



Bolt-On Rudder Plate

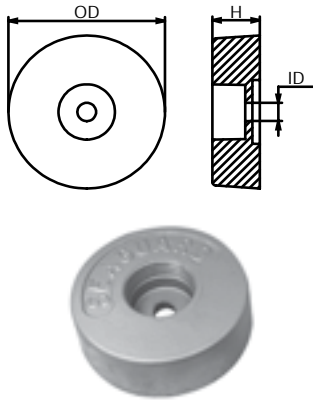
### HULL anodes

	PID	LB	KG		L	W	H	D	UPC
ZN	CMSH090Z	6.61	3.00	mm	300	60	33	200	6 28309 24554 2
				in	11.8	2.36	1.3	7.87	
ZN	CMSH091Z	11.00	5.00	mm	330	80	35	200	6 28309 24555 9
				in	13	3.15	1.38	7.87	
ZN	CMSH125Z	19.84	9.00	mm	440	88	40	230	6 28309 24557 3
				in	17.3	3.46	1.57	9.06	
ZN	CMSH126Z	26.46	12.00	mm	445	92	50	230	6 28309 24558 0
				in	17.5	3.62	1.97	9.06	
ZN	CMSH127Z	30.86	14.00	mm	455	98	55	230	6 28309 24559 7
				in	17.9	3.86	2.17	9.06	

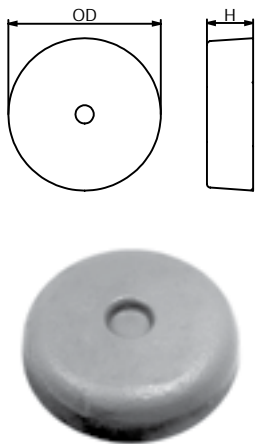
### RP SERIES RUDDER anodes

	PID	LB	KG		H	OD	ID	ID1	UPC
AL	CMRP4A	1.01	0.45	mm	25	100	50	12.5	6 28309 24708 9
MG	CMRP4M	0.72	0.33						6 28309 24714 0
ZN	CMRP4Z	2.24	1.01	in	0.98	3.94	1.96	0.49	6 28309 24702 7
AL	CMRP5A	1.89	0.86	mm	25.4	125	28	10	6 28309 24709 6
MG	CMRP5M	1.32	0.6						6 28309 24715 7
ZN	CMRP5Z	4.40	2	in	1	4.92	1.10	0.39	6 28309 24703 4
AL	CMRP6SA	2.45	1.11	mm	25.4	146	32	14.5	6 28309 25675 3
MG	CMRP6SM	1.67	0.76						6 28309 25676 0
ZN	CMRP6SZ	5.85	2.65	in	1	5.75	1.26	0.57	6 28309 25674 6
AL	CMRP6A	3.59	1.63	mm	38	146	32	14.5	6 28309 24710 2
MG	CMRP6M	2.39	1.09						6 28309 24716 4
ZN	CMRP6Z	8.82	4	in	1.49	5.75	1.26	0.57	6 28309 24704 1
AL	CMRP7A	3.15	1.43	mm	25	168	40	12	6 28309 24711 9
MG	CMRP7M	2.08	0.94						6 28309 24717 1
ZN	CMRP7Z	7.83	3.55	in	0.98	6.61	1.57	0.47	6 28309 24705 8
AL	CMRP8A	4.56	2.07	mm	26	197	20	12	6 28309 24712 6
MG	CMRP8M	2.98	1.35						6 28309 24718 8
ZN	CMRP8Z	11.50	5.22	in	1.02	7.75	0.79	0.47	6 28309 24706 5
AL	CMRP9A	5.87	2.66	mm	25.4	222.3	14	12	6 28309 24713 3
MG	CMRP9M	3.81	1.73						6 28309 24719 5
ZN	CMRP9Z	14.92	6.77	in	1	8.75	0.55	0.47	6 28309 24707 2

## ROUND PLATE anodes



	PID	LB	KG		OD	ID	H	UPC
AL	SGBA001A	2.18	0.99	mm	125	15	38	6 28309 18384 4
MG	SGBA001M	1.52	0.69					6 28309 18435 3
ZN	SGBA001Z	5.58	2.53	in	4.92	0.59	1.49	6 28309 18335 6
AL	SGBA506A	3.50	1.59	mm	140	16	40	6 28309 18385 1
MG	SGBA506M	2.45	1.11					6 28309 18523 7
ZN	SGBA506Z	8.14	3.69	in	5.51	0.63	1.57	6 28309 24126 1
AL	SGBA597A	5.11	2.32	mm	200	17	25	6 28309 18386 8
MG	SGBA597M	3.5	1.60					6 28309 18437 7
ZN	SGBA597Z	11.79	5.35	in	7.87	0.67	0.98	6 28309 18337 0



	PID	LB	KG		H	OD	UPC
AL	CMF90BA	0.86	0.39	mm	25	90	6 28309 24207 7
MG	CMF90BM	0.55	0.25				6 28309 24333 3
ZN	CMF90BZ	2.23	1.01	in	1	3.5	6 28309 24129 2