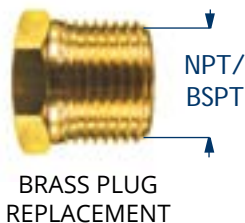


## ENGINE COOLING SYSTEM *anodes*



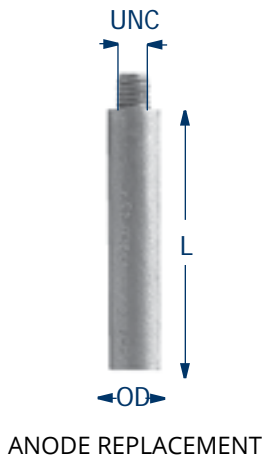
PID		LB	KG		L	OD	NPT/ BSPT	UPC
ZN	CME00	0.042	0.019	mm	49	6.4	1/8 NPT	6 28309 10319 4
				in	1.92	1/4		
ZN	CME0	0.095	0.043	mm	45	9.5	1/4 NPT	6 28309 10318 7
				in	1¾	3/8		
ZN	CME1	0.165	0.075	mm	51	12.7	3/8 NPT	6 28309 10320 0
				in	2	1/2		
ZN	CME1D	0.154	0.070	mm	45	12.7	3/8 NPT	6 28309 10321 7
				in	1¾	1/2		
ZN	CME1E	0.143	0.065	mm	38	12.7	3/8 NPT	6 28309 10322 4
				in	1½	1/2		
ZN	CME1F	0.130	0.059	mm	32	12.7	3/8 NPT	6 28309 10323 1
				in	1¼	1/2		
ZN	CME1G	0.117	0.053	mm	25	12.7	3/8 NPT	6 28309 10324 8
				in	1	1/2		
ZN	CME1H	0.123	0.056	mm	51	9.5	3/8 NPT	6 28309 10325 5
				in	2	3/8		
ZN	CME2	0.279	0.127	mm	51	16	1/2 NPT	6 28309 10326 2
				in	2	5/8		
ZN	CME2S	0.220	0.100	mm	51	16	1/2 NPT	6 28309 10327 9
				in	2	5/8		
ZN	CME3	0.440	0.200	mm	51	19	3/4 NPT	6 28309 10328 6
				in	2	3/4		
ZN	CME3SZ	0.330	0.150	mm	57	19	3/4 NPT	6 28309 11326 1
				in	2	3/4		
ZN	CME4	0.609	0.277	mm	86	19	3/4 NPT	6 28309 10329 3
				in	3 ⅜	3/4		
ZN	CME5	0.638	0.290	mm	92	19	3/4 NPT	6 28309 10330 9
				in	3 ⅝	3/4		
ZN	CME2BSP	0.279	0.127	mm	51	16	1/2 BSPT	6 28309 12176 1
				in	2	5/8		
ZN	CME3BSP	0.453	0.206	mm	51	19	3/4 BSPT	6 28309 12177 8
				in	2	3/4		
ZN	CME0AZ	0.125	0.057	mm	63	9.5	1/4	6 28309 17459 0
				in	2 ½	3/8		
ZN	CME2BZ	0.356	0.162	mm	76	16	1/2	6 28309 17460 6
				in	3	5/8		

## ENGINE COOLING SYSTEM *anodes*



PID	LB	KG	NPT / BSPT	UNC	UPC
<b>CMEP00</b>	0.02	0.009	1/8 NPT	1/4	6 28309 15844 6
<b>CMEP0</b>	0.05	0.027	1/4 NPT	5/16	6 28309 15843 9
<b>CMEP1</b>	0.06	0.027	3/8 NPT	3/8	6 28309 15846 0
<b>CMEP2</b>	0.12	0.054	1/2 NPT	7/16	6 28309 15847 7
<b>CMEP3</b>	0.25	0.114	3/4 NPT	1/2	6 28309 15849 1
<b>CMEP2BSP</b>	0.14	0.064	1/2 BSPT	7/16	6 28309 15848 4
<b>CMEP3BSP</b>	0.24	0.109	3/4 BSPT	1/2	6 28309 15850 7

## ENGINE COOLING SYSTEM *anodes*

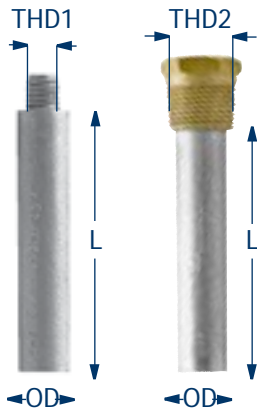


	PID	LB	KG		L	OD	UNC	UPC
<b>ZN</b>	<b>CMEZ00</b>	0.026	0.012	mm	49	6.4	1/4	6 28309 10338 5
				in	1.92	1/4		
<b>ZN</b>	<b>CMEZ0</b>	0.053	0.024	mm	45	9.5	5/16	6 28309 10337 8
				in	1 3/4	3/8		
<b>ZN</b>	<b>CMEZ1</b>	0.11	0.05	mm	51	12.7	3/8	6 28309 10339 2
				in	2	1/2		
<b>ZN</b>	<b>CMEZ1D</b>	0.095	0.043	mm	45	12.7	3/8	6 28309 10340 8
				in	1 3/4	1/2		
<b>ZN</b>	<b>CMEZ1E</b>	0.084	0.038	mm	38	12.7	3/8	6 28309 10341 5
				in	1 1/2	1/2		
<b>ZN</b>	<b>CMEZ1F</b>	0.070	0.032	mm	32	12.7	3/8	6 28309 10342 2
				in	1 1/4	1/2		
<b>ZN</b>	<b>CMEZ1G</b>	0.059	0.027	mm	25	9.5	3/8	6 28309 10343 9
				in	1	1/2		
<b>ZN</b>	<b>CMEZ1H</b>	0.062	0.028	mm	51	10	3/8	6 28309 10344 6
				in	2	3/8		
<b>ZN</b>	<b>CMEZ2</b>	0.165	0.075	mm	51	16	7/16	6 28309 10345 3
				in	2	5/8		
<b>ZN</b>	<b>CMEZ2S</b>	0.127	0.058	mm	38	16	7/16	6 28309 10346 0
				in	1 1/2	5/8		
<b>ZN</b>	<b>CMEZ3</b>	0.231	0.105	mm	51	19	1/2	6 28309 10347 7
				in	2	3/4		
<b>ZN</b>	<b>CMEZ3S</b>	0.101	0.046	mm	19	19	1/2	6 28309 12233 1
				in	3/4	3/4		
<b>ZN</b>	<b>CMEZ4</b>	0.381	0.173	mm	86	19	1/2	6 28309 10348 4
				in	3 3/4	3/4		
<b>ZN</b>	<b>CMEZ5</b>	0.409	0.186	mm	92	19	1/2	6 28309 10349 1
				in	3 5/8	3/4		

## ENGINE COOLING SYSTEM *anodes*

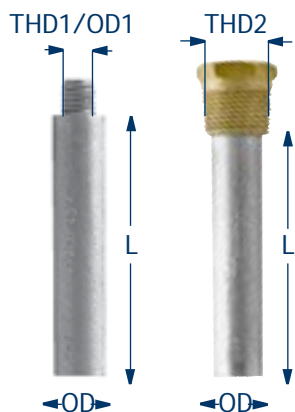


ENGINE	PID	L	OD	THD	OD1	UPC
<b>ZN</b>	AIFO <b>CM8105277Z</b>	mm	26	13	--	Ø10 6 28309 23487 4
<b>ZN</b>	AIFO <b>CM8105277PZ</b>	mm	26	13	M18 x1.5	6 28309 23486 7
<b>Plug</b>	AIFO <b>CMEBP1018Z</b>	mm	--	--	M18 x1.5 Ø10	6 28309 23887 2
<b>ZN</b>	AIFO <b>CM8101772Z</b>	mm	20	20	--	Ø14 6 28309 23481 2
<b>ZN</b>	AIFO <b>CM8101772PZ</b>	mm	20	20	M28 x1.5	6 28309 23480 5
<b>Plug</b>	AIFO <b>CMEBP1428</b>	mm	--	--	M28 x1.5 Ø14	6 28309 23889 6
<b>ZN</b>	AIFO <b>CMAF920Z</b>	mm	20	9	--	Ø4.5 6 28309 23543 7
<b>ZN</b>	AIFO <b>CMAF920PZ</b>	mm	20	9	M12 x1.5	6 28309 23542 0
<b>Plug</b>	AIFO <b>CMEBP4512</b>	mm	--	--	M12 x1.5 Ø4.5	6 28309 23892 6
<b>ZN</b>	AIFO <b>CM8109743Z</b>	mm	18	10	--	Ø7 6 28309 23493 5
<b>ZN</b>	AIFO <b>CM8109743PZ</b>	mm	18	10	M12 x1.5	6 28309 23492 8
<b>Plug</b>	AIFO <b>CMEBP712</b>	mm	--	--	M12 x1.5 Ø7	6 28309 24428 6
<b>ZN</b>	AIFO <b>CMAF720Z</b>	mm	20	7	--	Ø5 6 28309 23537 6
<b>ZN</b>	AIFO <b>CMAF720PZ</b>	mm	20	7	M10 x1.25	6 28309 23621 2
<b>Plug</b>	AIFO <b>CMEBP510</b>	mm	--	--	M10 x1.25 Ø5	6 28309 24427 9



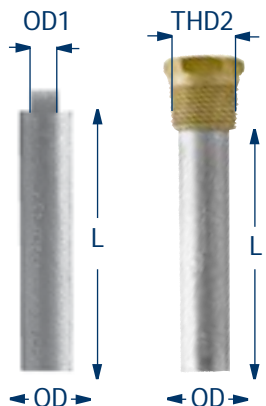
ENGINE	PID	L	OD	THD2	THD1	UPC
<b>ZN</b>	BMW <b>CMBM1241Z</b>	mm	41	12	--	3/8 BSW 6 28309 23570 3
<b>ZN</b>	BMW <b>CMBM1241PZ</b>	mm	41	12	3/8 NPT	6 28309 23569 7
<b>Plug</b>	BMW <b>CMEBP3838</b>	mm	--	--	3/8 NPT 3/8 BSW	6 28309 24426 2
<b>ZN</b>	BAUDOUIIN <b>CMEBD20Z</b>	mm	45	20	--	M8 x1.25 6 28309 21477 7
<b>ZN</b>	BAUDOUIIN <b>CMEBD20PZ</b>	mm	45	20	M24 x1.5	6 28309 21476 0
<b>Plug</b>	BAUDOUIIN <b>CMEBP824</b>	mm	--	--	M24 x1.5 M8 x1.25	6 28309 23253 5

## ENGINE COOLING SYSTEM *anodes*



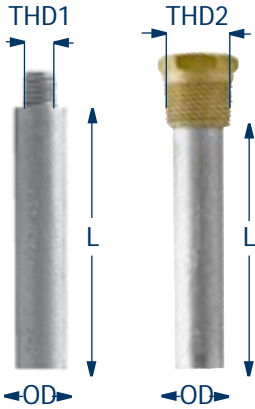
ENGINE	PID	L	OD	THD2	THD1	UPC	
ZN	BUKH	<b>CMB00E0450</b>	mm	36	12	-- M5	6 28309 23561 1
ZN	BUKH	<b>CMBK1240Z</b>	mm	40	12	-- 3/8	6 28309 23564 2

ENGINE	PID	L	OD	THD2	THD1	UPC	
ZN	CATERPILLAR	<b>CM8515850Z</b>	mm	86	19	-- 5/8 BSW	6 28309 12174 7
ZN	CATERPILLAR	<b>CMBM1241Z</b>	mm	41	12	-- 3/8 BSW	6 28309 23570 3
ZN	CATERPILLAR	<b>CMBM1241PZ</b>	mm	41	12	3/8 NPT	6 28309 23569 7
Plug	CATERPILLAR	<b>CMEBP3838</b>	mm	--	--	3/8 NPT 3/8 BSW	6 28309 24426 2
ZN	CATERPILLAR	<b>CM6L2288Z</b>	mm	64	16	-- 3/8 BSW	6 28309 12179 2
ZN	CATERPILLAR	<b>CM6L2288PZ (2284 SERIES)</b>	mm	64	16	1/2 NPT	6 28309 24110 0
Plug	CATERPILLAR	<b>CMEBP3812</b>	mm	--	--	1/2 NPT 3/8 BSW	6 28309 24425 5
ZN	CATERPILLAR	<b>CM6L2289Z (2289 SERIES)</b>	mm	76	16	-- 3/8 BSW	6 28309 23454 6
ZN	CATERPILLAR	<b>CM6L2289PZ</b>	mm	76	16	1/2 NPT	6 28309 23453 9
ZN	CATERPILLAR	<b>CM6L2283Z</b>	mm	58	10	-- 1/4 BSW	6 28309 12167 9
ZN	CATERPILLAR	<b>CM6L2283PZ</b>	mm	58	10	1/4 NPT	6 28309 24109 4
Plug	CATERPILLAR	<b>CMEBP1414</b>	mm	--	--	1/4 NPT 1/4 BSW	6 28309 24424 8
ZN	CATERPILLAR	<b>CM6L2016Z</b>	mm	20	22	-- 5/8 UNF	6 28309 12339 0

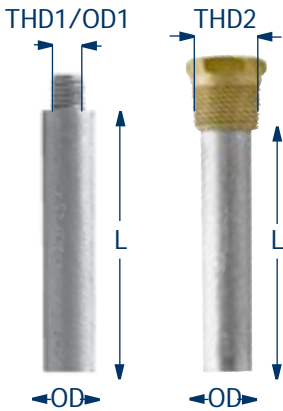


ENGINE	PID	L	OD	THD2	THD1 / OD1	UPC	
ZN	CATERPILLAR	<b>CM6L2016PZ</b>	mm	20	22	3/4 NPT	6 28309 24108 7
Plug	CATERPILLAR	<b>CMEBP5834</b>	mm	--	--	3/4 NPT 5/8 UNF	6 28309 23895 7
ZN	CATERPILLAR	<b>CM6L3104Z</b>	mm	38	10	-- 1/4 UNC	6 28309 23457 7
ZN	CATERPILLAR	<b>CMCA3208Z (3208 SERIES)</b>	mm	26	14	-- Ø12	6 28309 23597 0
ZN	CATERPILLAR	<b>CM6L2285Z</b>	mm	54	32	-- 3/4 BSW	6 28309 23448 5
ZN	CATERPILLAR	<b>CM6L2284Z (2284 SERIES)</b>	mm	33	14	-- 5/16 UNC	6 28309 23445 4

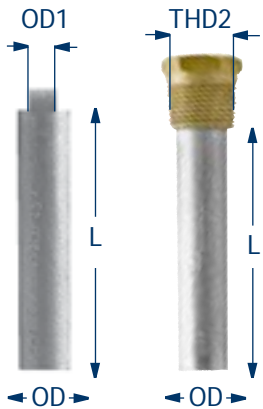
## ENGINE COOLING SYSTEM *anodes*



	ENGINE	PID		L	OD	THD2	THD1	UPC
ZN	CATERPILLAR	CM6L2280GZ	mm	38	12	--	7/16 UNF	6 28309 24097 4
ZN	CATERPILLAR	CM6L2280PZ	mm	38	12	3/8 BSPT	--	6 28309 24096 7
Plug	CATERPILLAR	CMEBP71638	mm	--	--	3/8 BSPT	7/16 UNF	6 28309 24429 3
ZN	CATERPILLAR	CMCA1230Z	mm	30	12	--	3/8 BSW	6 28309 23594 9
ZN	CATERPILLAR	CMCA1230PZ	mm	30	12	3/8 NPT	--	6 28309 23593 2
Plug	CATERPILLAR	CMEBP3838	mm	--	--	3/8 NPT	3/8 BSW	6 28309 24426 2
ZN	CATERPILLAR	CM6L2283Z	mm	58	10	--	1/4 BSW	6 28309 12167 9
ZN	CATERPILLAR	CM6L2288Z	mm	64	16	--	1/4 UNF	6 28309 12179 2
ZN	CATERPILLAR	CM6L2016Z	mm	20	22	--	5/8	6 28309 12339 0

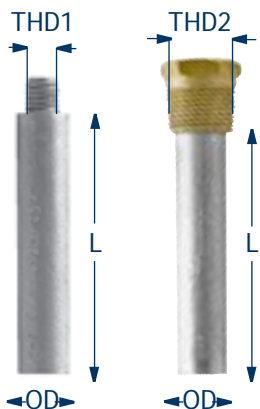


	ENGINE	PID		L	OD	THD2	THD1 /OD1	UPC
ZN	CUMMINS	CMCU1650Z	mm	50	16	--	Ø12	6 28309 23615 1
ZN	CUMMINS	CMCU1650PZ	mm	50	16	1/2 NPT	--	6 28309 23614 4
Plug	CUMMINS	CMEBP1212	mm	--	--	1/2 NPT	Ø12	6 28309 23888 9
ZN	CUMMINS	CMECU16Z	mm	50	16	--	7/16 UNF	6 28309 21483 8
ZN	CUMMINS	CMECU16PZ	mm	50	16	1/2 NPT	--	6 28309 21482 1
ZN	CUMMINS	CMCU1865Z	mm	65	16	--	M16X 1.5	6 28309 23618 2
ZN	CUMMINS	CMCU1645Z	mm	45	16	--	3/8 BSW	6 28309 23609 0
ZN	CUMMINS	CMCU1020Z	mm	20	10	--	M6	6 28309 23606 9
ZN	CUMMINS	CMCU1020PZ	mm	20	10	3/8 GAS	--	6 28309 23605 2



	ENGINE	PID		L	OD	THD2	OD1	UPC
ZN	FORD	CMFO1018Z	mm	18	10	--	Ø8.5	6 28309 23663 2
ZN	FORD	CMFO1018PZ	mm	18	10	1/4 NPT	--	6 28309 23662 5
Plug	FORD	CMEBP8514	mm	--	--	1/4 NPT	Ø8.5	6 28309 23900 8
ZN	FORD	CMFO1332Z	mm	32	13	--	Ø9	6 28309 23666 3

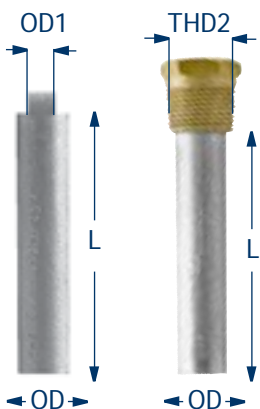
## ENGINE COOLING SYSTEM *anodes*



	ENGINE	PID		L	OD	THD1	THD2	UPC
ZN	GENERAL MOTOS	CM8517479Z	mm	40	16	--	7/16 BSW	6 28309 23513 0
ZN	GENERAL MOTOS	CM8517479PZ	mm	40	16	1/2 NPT	--	6 28309 23512 3
ZN	GENERAL MOTOS	CM8515851Z (8515851 SE-RIES)	mm	80	20	--	5/8 BSW	6 28309 23507 9
ZN	GENERAL MOTOS	CM8515842Z	mm	54	19	--	5/8 BSW	6 28309 12175 4
ZN	GENERAL MOTOS	CM8925832Z	mm	40	12	--	3/8 BSW	6 28309 23522 2
ZN	GENERAL MOTOS	CMEZ2	mm	51	16	--	7/16 UNC	6 28309 10345 3

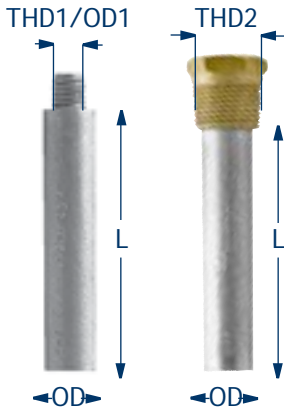
	ENGINE	PID		L	OD	THD2	THD1	UPC
ZN	ISOTTA FRASCHINI	CMIF2034Z	mm	34	20	--	M18 x1.5	6 28309 23672 4
ZN	ISOTTA FRASCHINI	CMIF2034PZ	mm	34	20	M24 x1.5	--	6 28309 23671 7

	ENGINE	PID		L	OD	THD2	THD1	UPC
ZN	MPM	CMMP1348Z	mm	48	13	--	3/8	6 28309 23723 3

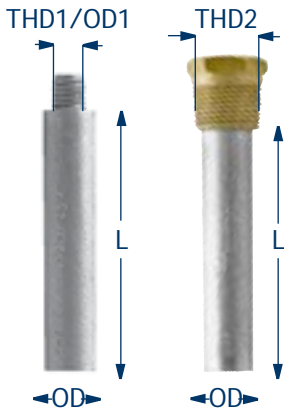


	ENGINE	PID		L	OD	THD2	OD1	UPC
AL	NANNI	CM970494635A	mm	20	10	--	Ø8	6 28309 23526 0
MG	NANNI	CM970494635M						6 28309 23527 7
ZN	NANNI	CM970494635Z						6 28309 23531 4
AL	NANNI	CM970494635PA	mm	20	10	M16 x1.5	--	6 28309 23528 4
MG	NANNI	CM970494635PM						6 28309 23529 1
ZN	NANNI	CM970494635PZ						6 28309 23530 7
Plug	NANNI	CMEBP816	mm	--	--	M16 x1.5	Ø8	6 28309 23898 8
ZN	NANNI	CMNN2525Z	mm	25	25	--	Ø22	6 28309 23758 5
ZN	NANNI	CMNN2525PZ	mm	25	25	M30 x1.5	--	6 28309 23757 8
Plug	NANNI	CMEBP2230	mm	--	--	M30 x1.5	Ø22	6 28309 23891 9

## ENGINE COOLING SYSTEM *anodes*

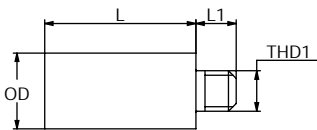


ENGINE		PID		L	OD	THD2	THD1 /OD1	UPC
AL	ONAN	CMON1030A						6 28309 23759 2
MG	ONAN	CMON1030M	mm	30	10	--	Ø8	6 28309 23760 8
ZN	ONAN	CMON1030Z						6 28309 23761 5
ZN	ONAN	CM1301341PZ	mm	30	10	3/8 NPT	--	6 28309 23330 3
Plug	ONAN	CMEBP51638	mm	--	--	3/8 NPT	Ø8	6 28309 23893 3
ZN	ONAN	CMON1326Z	mm	26	13	--	Ø9.5	6 28309 23770 7
ZN	ONAN	CMON1131Z	mm	31	11	--	M8	6 28309 23767 7
ZN	ONAN	CMON1131PZ	mm	31	11	3/8 NPT	--	6 28309 23766 0
Plug	ONAN	CMEBP838	mm	--	--	3/8 NPT	M8	6 28309 23899 5

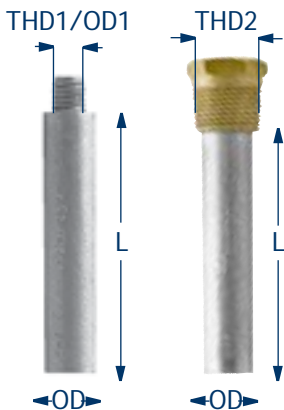


ENGINE	PID		L	OD	THD2	THD1	UPC	
ZN	SCANIA	CMSC1645Z	mm	45	16	--	M12 x1.0	6 28309 23812 4

ENGINE	PID		L	OD	THD2	THD1 /OD1	UPC	
ZN	RENAULT	CMERE14Z	mm	25	14	--	Ø12	6 28309 21142 4
ZN	RENAULT	CMERE14PZ	mm	25	14	M18 x1.5	--	6 28309 21141 7
Plug	RENAULT	CMEREBP18	mm	--	--	M18 x1.5	Ø12	6 28309 23254 2
Plug	RENAULT	CMRE1130PZ	mm	30	11	3/8 conico	M8	6 28309 23782 0



ENGINE	PID		L	L1	OD	THD1	UPC			
ZN	STEYR	STE217841Z	kg	0.038	mm	30	8	15	M8	6 28309 22975 7

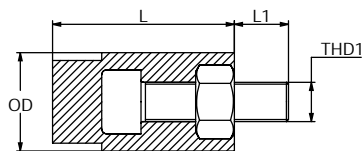


ENGINE	PID		L	OD	THD2	THD1	UPC	
ZN	VM	CMVM40Z	mm	40	14	--	M8	6 28309 21514 9
ZN	VM	CMVM40PZ	mm	40	14	M18 x1.5	--	6 28309 21513 2
Plug	VM	CMVMBP8	mm	--	--	M18 x1.5	M8	6 28309 23261 0
ZN	VM	CMVM20Z	mm	20	14	--	M8	6 28309 21508 8
ZN	VM	CMVM20PZ	mm	20	14	M18 x1.5	--	6 28309 21507 1
Plug	VM	CMVMBP8	mm	--	--	M18 x1.5	M8	6 28309 23261 0
ZN	VM	CMVMM10Z	mm	20	14	--	M10	6 28309 21520 0
ZN	VM	CMVMM10PZ	mm	20	14	M18 x1.5	--	6 28309 21519 4

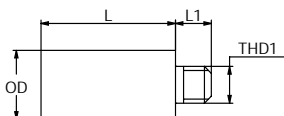
## ENGINE COOLING SYSTEM *anodes*



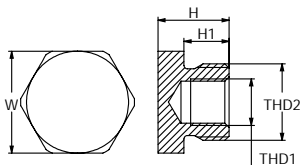
	ENGINE	PID		L	OD	THD1	UPC
ZN	VOLVO PENTA	CM8517479Z	mm	40	16	7/16 BSW	6 28309 23513 0
ZN	VOLVO PENTA	CM838929Z (200-250-270)	mm	30	17	7/16 UNC	6 28309 10128 2
AL	VOLVO PENTA	CM838929A	mm	30	17	7/16 UNC	6 28309 12328 4
MG	VOLVO PENTA	CM838929M	mm	30	17	7/16 UNC	6 28309 19298 3
AL	VOLVO PENTA	CMEZ2SA	mm	38	16	7/16 UNC	Please contact us for more info
MG	VOLVO PENTA	CMEZ2SM	mm	38	16	7/16 UNC	Please contact us for more info
ZN	VOLVO PENTA	CMEZ2S	mm	38	16	7/16 UNC	6 28309 10346 0
AL	VOLVO PENTA	CM823661A	mm	43	26	3/8 UNC	6 28309 12327 7
MG	VOLVO PENTA	CM823661M	mm	43	26	3/8 UNC	6 28309 12374 1
ZN	VOLVO PENTA	CM823661Z	mm	43	26	3/8 UNC	6 28309 10118 3
ZN	VOLVO PENTA	CMVP16520Z	mm	20	16.5	5/16 BSW	6 28309 23815 5



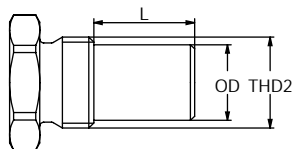
	ENGINE	PID		L	L1	OD	THD1	UPC		
ZN	YANMAR	CM27210200370Z	kg	0.08	mm	37	11	20	M8	6 28309 23048 7
ZN	YANMAR	CM27210200550Z	kg	0.119	mm	55	11	20	M8	6 28309 23049 4
ZN	YANMAR	CM12065013420Z	kg	0.029	mm	20	8	15	7/16 UNF	6 28309 23037 1



	ENGINE	PID		H	H1	W	THD2	THD1	UPC		
Plug	YANMAR	CMEBP71618	kg	0.037	mm	16.7	6.1	24	M18 X 1.5	7/16 UNF	6 28309 23088 3



	ENGINE	PID		L	OD	THD2	UPC		
ZN	YANMAR	CM12065013420PZ	kg	0.066	mm	20	15	M18 X 1.5	6 28309 23036 4



	ENGINE	PID		L	OD	THD2	THD1	UPC
ZN	YANMAR	SGYN068Z (YANMAR 8-10 HP)	mm	39	30	--	M8	6 28309 18318 9
ZN	YANMAR	SGYN069Z	mm	30	20	--	M8	6 28309 18319 6
ZN	YANMAR	SGYN069TZ	mm	30	20	1/8 NPT	--	6 28309 24156 8
ZN	YANMAR	SGYN224Z	mm	20	20	--	M8	6 28309 18320 2
ZN	YANMAR	SGYN224TZ	mm	20	20	3/8 NPT	--	6 28309 24157 5

