

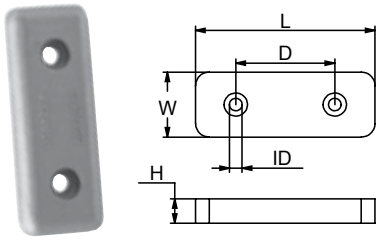
COMMERCIAL

HULL ANODES

Notes:

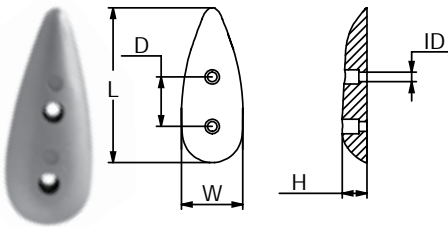
- 1. All weights are nominal gross weight.***
- 2. Inserts and straps are available in either Aluminum or steel.***
- 3. Bolt size is suggested.***
- 4. Contact us for special configuration requirements.***
- 5. Detailed drawings are available. Protective backing available for better performance. Please check for details when ordering.***

HULL anodes



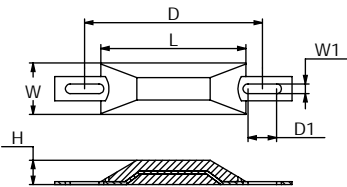
	PID	LB	KG		L	W	H	D	ID	UPC
AL	CM656934A	0.14	0.06	mm	83	31	11	46	6	6 28309 11551 7
ZN	CM656934Z	0.35	0.16	in	3.25	1.2	0.45	1.8	0.23	6 28309 11306 3

Bolt-on



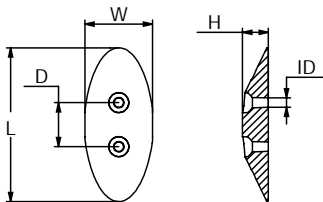
	PID	LB	KG		L	W	H	D	ID	UPC
AL	CMT20A	0.15	0.07	mm	86	46	15	33	6	6 28309 12398 7
MG	CMT20M	0.10	0.05							6 28309 12191 4
ZN	CMT20Z	0.38	0.17	in	3.4	1.8	0.6	1.28	0.25	6 28309 10358 3

Bolt-on



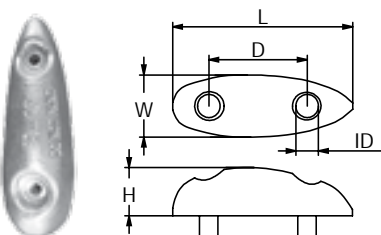
	PID	LB	KG		L	W	W1	H	D	D1	UPC
ZN	CM200Z	0.44	0.20	mm	96	34	6	16	117	19	6 28309 11503 6
				in	3.78	1.33	0.25	0.63	4.6	0.75	

Combo



	PID	LB	KG		L	W	H	D	ID	UPC
AL	CMM24A	0.30	0.15	mm	111	49	18	32	6	6 28309 12376 5
ZN	CMM24Z	0.65	0.29	in	4.36	1.92	0.70	1.25	0.25	6 28309 10679 9

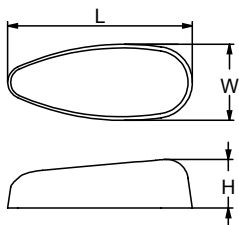
Bolt-on



	PID	LB	KG		L	W	H	D	ID	UPC
AL	CMZ12A	0.22	0.24	mm	93	32	24	51	7	6 28309 12074 0
ZN	CMZ12Z	0.53	0.24	in	3.62	1.25	1	2	0.26	6 28309 11208 0

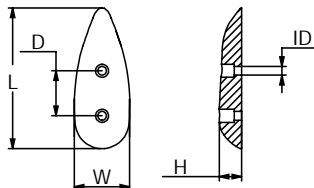
Bolt-on

HULL anodes



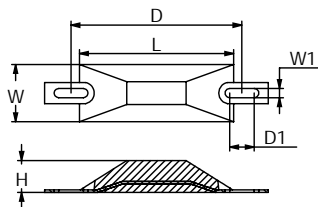
	PID	LB	KG		L	W	H	UPC	
AL	CM335A	0.28	0.13	mm	85	36	24	6	28309 12399 4
ZN	CM335Z	0.71	0.32	in	3.35	1.4	0.93	6	28309 12204 1

Bolt-on



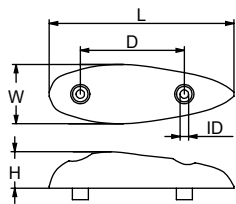
	PID	LB	KG		L	W	H	D	ID	UPC
AL	CMT21A	0.39	0.18	mm	129	51	21	41	8	6 28309 12396 3
MG	CMT21M	0.30	0.15							6 28309 24385 2
ZN	CMT21Z	1.00	0.45	in	5.1	2	0.83	1.62	0.31	6 28309 10359 0

Bolt-on



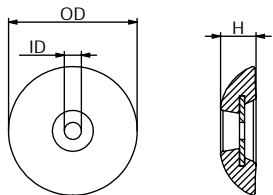
	PID	LB	KG		L	W	W1	H	D	D1	UPC
ZN	CM500Z	1.10	0.50	mm	116	43	7	24	128	19	6 28309 11504 3
				in	4.5	1.68	0.26	1	5	0.75	

Combo



	PID	LB	KG		L	W	H	D	ID	UPC
AL	CMZ13A	0.65	0.30	mm	145	47	29	83	7	6 28309 12071 9
ZN	CMZ13Z	1.50	0.70	in	5.75	1.84	1.14	3.25	0.26	6 28309 11209 7

Bolt-on

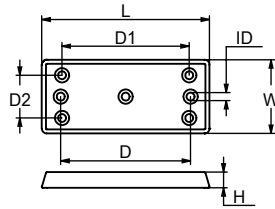


	PID	LB	KG		OD	ID	H	UPC	
ZN	CMZD56Z	1.90	0.86	mm	102	14	28	6	28309 12610 0
				in	4	0.53	1.1		

Combo

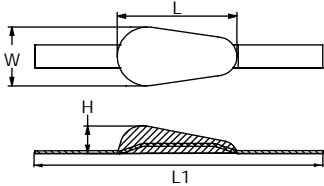
BOLT HOLES CAN BE ADDED ON STRAPS AS REQUIRED

HULL anodes



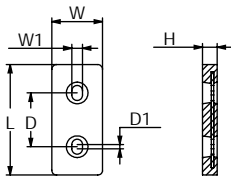
	PID	LB	KG		L	W	H	D	D1	D2	ID	UPC
AL	CMM30A	0.74	0.34	mm	152	68	14	121	118	40	6	6 28309 12378 9
ZN	CMM30Z	1.90	0.86	in	6	2.67	0.56	4.75	4.62	1.58	0.25	6 28309 10681 2

Weld-on



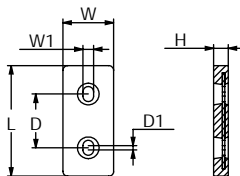
	PID	LB	KG		L	W	H	UPC
AL	CM35GA	0.80	0.40	mm	127	61	30	6 28309 12365 9
ZN	CM35GZ	2.00	0.90	in	5	2.4	1.16	6 28309 12151 8

Weld-on



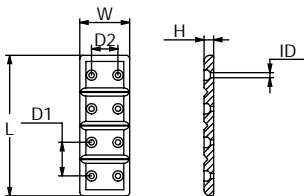
	PID	LB	KG		L	W	W1	H	D	D1	UPC
AL	CMZHC3AA	0.765	0.347	mm	159	70	14	19	65	15	6 28309 11402 2
MG	CMZHC3AM	0.517	0.234								6 28309 26315 7
ZN	CMZHC3AZ	1.925	0.873	in	6.25	2.75	0.54	0.75	2.57	0.57	6 28309 11226 4

Bolt-on



	PID	LB	KG		L	W	W1	H	D	D1	UPC
AL	CMZHC2AA	0.80	0.37	mm	146	67	13	19	71	6	6 28309 11401 5
ZN	CMZHC2AZ	2.07	0.94	in	5.75	2.65	0.5	0.75	2.78	0.25	6 28309 11225 7

Bolt-on



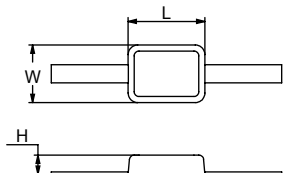
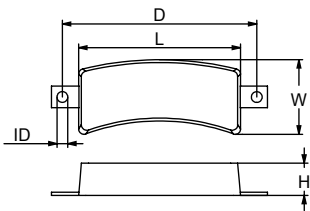
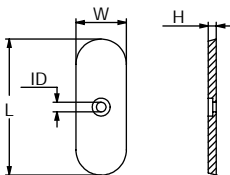
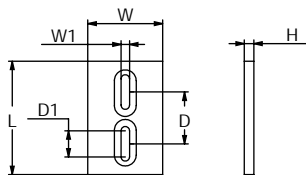
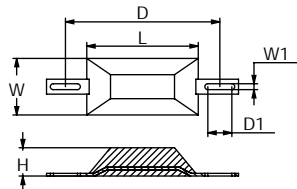
	PID	LB	KG		L	W	H	D1	D2	ID	UPC
AL	CMM40A	0.81	0.37	mm	186	66	13	45	35	7	6 28309 12379 6
ZN	CMM40Z	2.08	0.95	in	7.3	2.6	0.5	1.75	1.37	0.28	6 28309 10682 9

Bolt-on



BOLT HOLES CAN BE ADDED ON STRAPS AS REQUIRED

HULL anodes



	PID	LB	KG		L	W	W1	H	D	D1	UPC
ZN	CM1000Z	2.20	1.00	mm	118	60	6	30	162	25	6 28309 11502 9
				in	4.12	2.25	0.25	1.18	6.38	1	

Combo

	PID	LB	KG		L	W	W1	H	D	D1	UPC
AL	CMDIVERMINIA	0.87	0.40	mm	150	99	11	13	69	35	6 28309 12375 8
MG	CMDIVERMINIM	0.68	0.31								6 28309 11506 7
ZN	CMDIVERMINIZ	2.25	1.02	in	5.9	3.9	0.44	0.5	2.7	1.36	6 28309 11338 4

Bolt-on

See Part ID: *CMDIVERMINIHZ* for a heavier version

	PID	LB	KG		L	W	H	ID	UPC
AL	CMN1A	1.01	0.46	mm	216	80	13	10	6 28309 12347 5
ZN	CMN1Z	2.60	1.19	in	8.5	3.15	0.5	0.41	6 28309 12348 2

Bolt-on

	PID	LB	KG		OD	ID	H	D	ID	UPC
ZN	CMH18BZ	2.90	1.32	mm	150	69	30	180	10	6 28309 24467 5
				in	6	2.75	1.19	7	0.37	

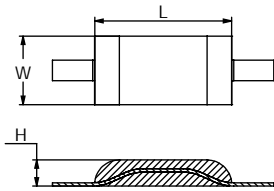
Combo

	PID	LB	KG		L	W	H	UPC
AL	CM2431GA	1.30	0.60	mm	102	76	25	6 28309 12362 8
ZN	CM2431GZ	3.08	1.40	in	4	3	1	6 28309 12143 3

Weld-on

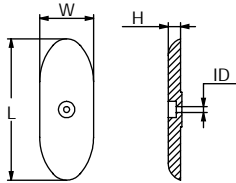
BOLT HOLES CAN BE ADDED ON STRAPS AS REQUIRED

HULL anodes



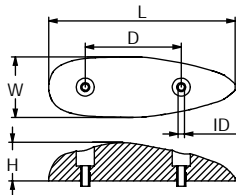
	PID	LB	KG		L	W	H	UPC
AL	CMZ06A	1.30	0.60	mm	127	64	25	6 28309 11390 2
ZN	CMZ06Z	3.08	1.40	in	5	2.5	1	6 28309 11205 9

Weld-on



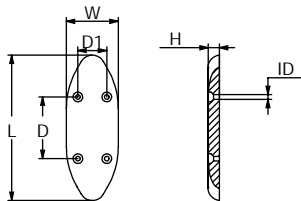
	PID	LB	KG		L	W	H	ID	UPC
AL	CMMZ404A	1.33	0.60	mm	224	86	19	10	6 28309 12380 2
ZN	CMMZ404Z	3.42	1.55	in	8.8	3.37	0.75	0.37	6 28309 11339 1

Bolt-on



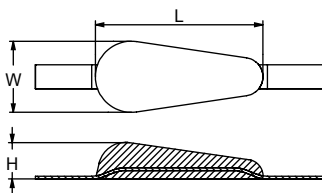
	PID	LB	KG		L	W	H	D	ID	UPC
AL	CMZ14A	1.50	0.68	mm	197	64	38	101	7	6 28309 12080 1
ZN	CMZ14Z	3.65	1.66	in	7.75	2.5	1.5	4	0.26	6 28309 11210 3

Bolt-on



	PID	LB	KG		L	W	H	D	D1	ID	UPC
AL	CMM25A	1.52	0.69	mm	231	83	18	98	46	7	6 28309 12377 2
ZN	CMM25Z	3.92	1.78	in	9.1	3.25	0.72	3.86	1.81	0.29	6 28309 10680 5

Bolt-on



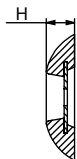
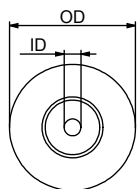
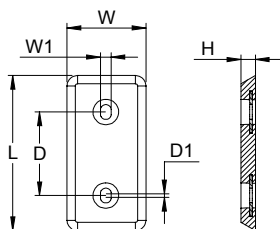
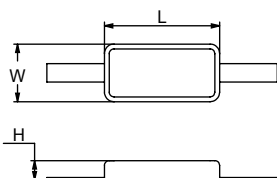
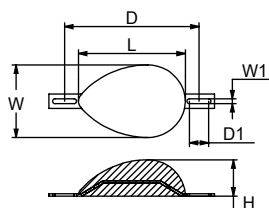
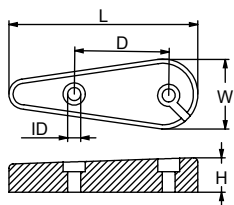
	PID	LB	KG		L	W	H	UPC
AL	CM37GA	1.70	0.80	mm	178	76	38	6 28309 12361 1
ZN	CM37GZ	4.00	1.80	in	7	3	1.5	6 28309 12150 1

Weld-on



BOLT HOLES CAN BE ADDED ON STRAPS AS REQUIRED

HULL anodes



	PID	LB	KG		L	W	H	D	ID	UPC
AL	CMARCHNA	1.70	0.80	mm	175	65	32	88	12	6 28309 12538 7
ZN	CMARCHNZ	4.00	1.80	in	6.9	2.5	1.3	3.44	0.47	6 28309 12537 0

Bolt-on

	PID	LB	KG		L	W	W1	H	D	D1	UPC
ZN	CM2000Z	4.40	2.00	mm	141	96	6	48	184	19	6 28309 11932 4
				in	5.55	3.78	0.25	1.9	7.24	0.75	

Combo

	PID	LB	KG		L	W	H	UPC
AL	CM2631GA	1.90	0.90	mm	152	76	25	6 28309 12364 2
ZN	CM2631GZ	4.50	2.00	in	6	3	1	6 28309 12144 0

Weld-on

	PID	LB	KG		L	W	W1	H	D	D1	UPC
AL	CMZHC5AA	1.80	0.81	mm	203	102	14	19	110	6	6 28309 12312 3
MG	CMZHC5AM	1.18	0.53								6 28309 24421 7
ZN	CMZHC5AZ	4.68	2.12	in	8	4	0.55	0.76	4.35	0.23	6 28309 11228 8

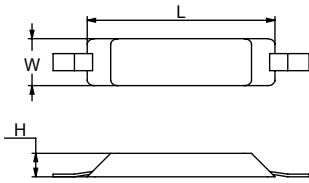
Bolt-on

	PID	LB	KG		OD	ID	H	UPC
AL	CMZD58A	1.98	0.90	mm	150	20	34	6 28309 24258 9
ZN	CMZD58Z	4.84	2.20	in	5.9	0.79	1.34	6 28309 12639 1

Bolt-on

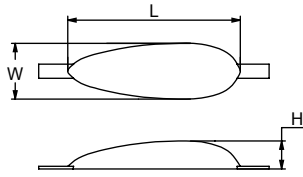
BOLT HOLES CAN BE ADDED ON STRAPS AS REQUIRED

HULL anodes



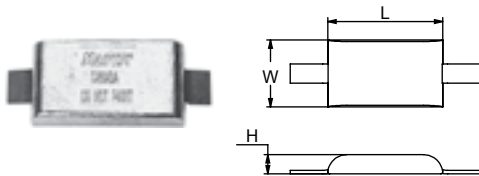
	PID	LB	KG		L	W	H	UPC
AL	CMZC5A	1.98	0.90	mm	224	56	28	6 28309 11399 5
ZN	CMZC5Z	4.85	2.20	in	8.8	2.2	1.1	6 28309 20141 8

Weld-on



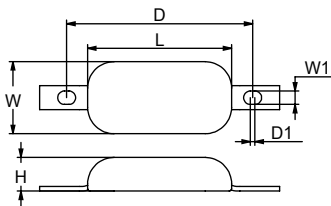
	PID	LB	KG		L	W	H	UPC
AL	CMZTSA	2.10	0.95	mm	229	76	38	6 28309 11406 0
ZN	CMZTSZ	5.00	2.27	in	9	3	1.5	6 28309 11285 1

Weld-on



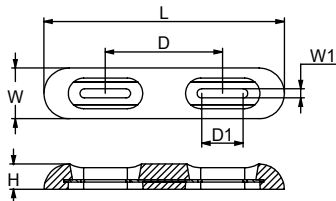
	PID	LB	KG		L	W	H	UPC
AL	CMZ04A	2.10	1.00	mm	152	89	25	6 28309 11388 9
ZN	CMZ04Z	5.07	2.30	in	6	3.5	1	6 28309 11203 5

Weld-on



	PID	LB	KG		L	W	W1	H	D	D1	UPC
AL	CMHT1A	2.30	1.04	mm	152	76	14	36	197	5	6 28309 12541 7
ZN	CMHT1Z	5.10	2.30	in	6	3	0.56	1.4	7.75	0.19	6 28309 11952 2

Combo

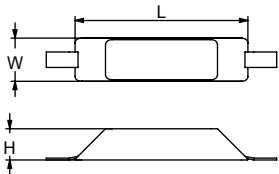
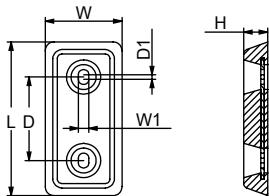
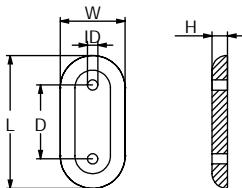
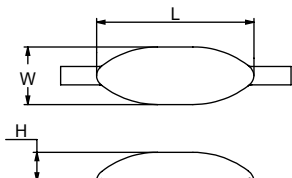
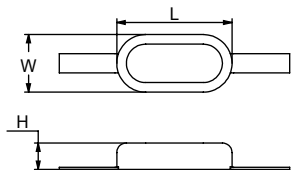


	PID	LB	KG		L	W	W1	H	D	D1	UPC
ZN	CMZD77EUROZ	5.29	2.40	mm	318	67	12	34	155	55	6 28309 12607 0
				in	12.5	2.6	0.47	1.3	6.1	2.17	

Bolt-on

BOLT HOLES CAN BE ADDED ON STRAPS AS REQUIRED

HULL anodes



	PID	LB	KG		L	W	H	UPC
AL	CM273125GA	2.20	1.00	mm	152	76	35	6 28309 12359 8
ZN	CM273125GZ	5.50	2.50	in	6	3	1.38	6 28309 12146 4

Weld-on

	PID	LB	KG		L	W	H	UPC
AL	CM39315GA	2.20	1.00	mm	208	76	38	6 28309 12366 6
ZN	CM39315GZ	5.50	2.50	in	8.2	3	1.5	6 28309 12152 5

Weld-on

	PID	LB	KG		L	W	H	D	ID	UPC
AL	CMMZC406A	2.62	1.19	mm	229	112	25	127	13	6 28309 12381 9
MG	CMMZC406M	0.55	0.25							6 28309 17620 4
ZN	CMMZC406Z	6.75	3.07	in	9	4.4	1	5	0.5	6 28309 11340 7

Bolt-on

	PID	LB	KG		L	W	W1	H	D	D1	UPC
AL	CMZHC06GBA	2.90	1.30	mm	203	101	14	32	111	6	6 28309 24264 0
ZN	CMZHC06GBZ	6.80	3.10	in	8	4	0.55	1.25	4.35	0.23	6 28309 16617 5

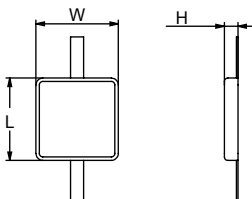
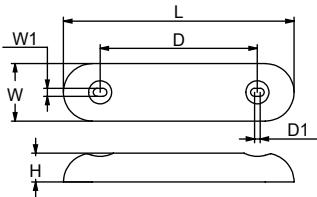
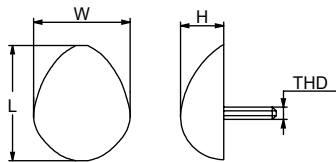
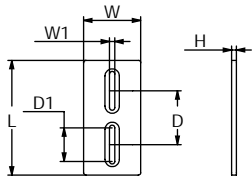
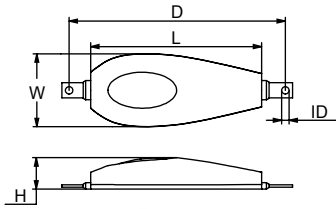
Bolt-on

	PID	LB	KG		L	W	H	UPC
AL	CMZC7A	3.00	1.35	mm	228	57	41	6 28309 11400 8
ZN	CMZC7Z	7.00	3.15	in	9	2.25	1.62	6 28309 11223 3

Weld-on

BOLT HOLES CAN BE ADDED ON STRAPS AS REQUIRED

HULL anodes



	PID	LB	KG		L	W	H	D	ID	UPC
MG	CMMGJRGM	2.00	0.91	mm	226	96	40	286	10	6 28309 115549 0
				in	8.9	3.75	1.5	11.25	0.37	

Combo

With Plastisol Coating

	PID	LB	KG		L	W	W1	H	D	D1	UPC
AL	CMDIVERA	3.25	1.48	mm	305	152	13	25	140	89	6 28309 10183 1
MG	CMDIVERM	2.50	1.14								6 28309 11507 4
ZN	CMDIVERZ	8.00	3.60	in	12	6	0.5	1	5.5	3.5	6 28309 11365 0

Bolt-on



Aluminum version now available in packaged kit with all hardware included. Part ID: **CMDIVERBOND**
For a heavier version: Part ID: **CMDIVERH**

	PID	LB	KG		L	W	H	THD	UPC
AL	CM36BSSA	3.50	1.60	mm	152	127	57	3/8-16	6 28309 12402 1
ZN	CM36BSSZ	8.75	3.97	in	6	5	2.25	NC	6 28309 12153 2

Bolt-on

	PID	LB	KG		L	W	W1	H	D	D1	UPC
ZN	CMZD78BZ	9.00	4.00	mm	305	76	10	38	208	8	6 28309 12609 4
				in	12	3	0.39	1.5	8.19	0.29	

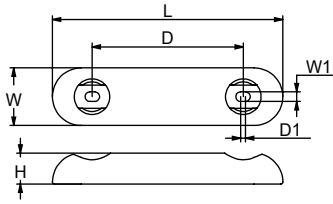
Bolt-on

	PID	LB	KG		L	W	H	UPC
AL	CM1661GA	1.90	0.90	mm	152	152	25	6 28309 12363 5
ZN	CM1661GZ	9.00	4.00	in	6	6	1	6 28309 12145 7

Weld-on

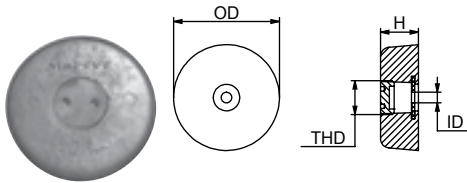
BOLT HOLES CAN BE ADDED ON STRAPS AS REQUIRED

HULL anodes



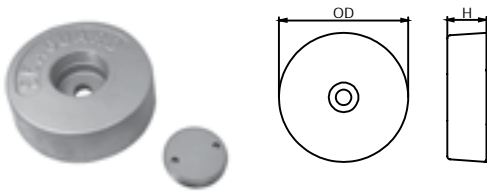
	PID	LB	KG		L	W	W1	H	D	D1	UPC
AL	CMZ03BSA	3.96	1.8	in	12	3	0.56	1.6	7.88	0.16	6 28309 12857 9
ZN	CMZ03BSZ	9.00	4.0	mm	305	76	14	41	200	5	6 28309 12733 6

Bolt-on



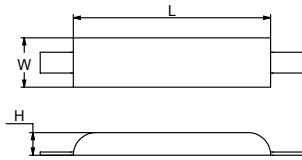
	PID	LB	KG		OD	ID	H	THD	UPC
AL	CMH06A (AZIMUT)	3.63	1.65	in	5.3	0.63	2	M45	6 28309 12475 5
ZN	CMH06Z (AZIMUT)	9.24	4.20	mm	135	16	50	x 2	6 28309 11490 9

Bolt-on



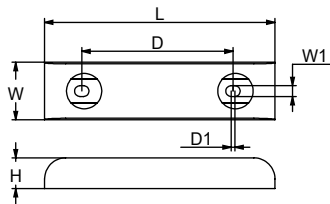
	PID	LB	KG		OD	H	UPC
AL	CMF125PB4TPA	1.58	0.72	in	4.92	1.49	6 28309 24668 6
ZN	CMF125PB4TPZ	5.86	2.66	mm	125	38	6 28309 24656 3

Bolt-on



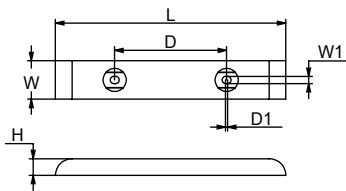
	PID	LB	KG		L	W	H	UPC
AL	CMZ03A	4.85	2.20	in	12	3	1.37	6 28309 11385 8
ZN	CMZ03Z	10.30	4.68	mm	305	76	35	6 28309 11198 4

Weld-on



	PID	LB	KG		L	W	W1	H	D	D1	UPC
AL	CMZ03BA	5.20	2.36	in	12	3	0.56	1.6	7.88	0.19	6 28309 11387 2
ZN	CMZ03BZ	13.70	6.22	mm	305	76	14	41	200	5	6 28309 11200 4

Bolt-on



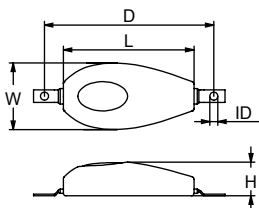
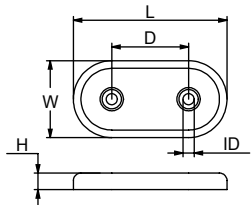
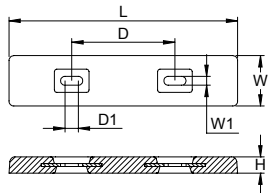
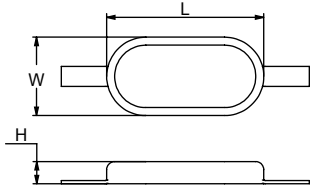
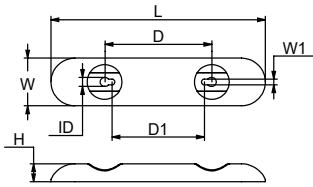
	PID	LB	KG		L	W	W1	H	D	D1	UPC
AL	CMZ15BA	6.33	2.88	in	18	3	0.62	1.3	9.25	0.25	6 28309 12017 7
ZN	CMZ15BZ	15.20	6.90	mm	457	76	16	33	235	6	6 28309 11211 0

Bolt-on



BOLT HOLES CAN BE ADDED ON STRAPS AS REQUIRED

HULL anodes



	PID	LB	KG		L	W	W1	H	D	D1	ID	UPC
AL	CMZD72BMA	6.85	3.11	mm	457	102	12	38	229	203	19	6 28309 12789 3
ZN	CMZD72BM	16.2	7.35	in	18	4	0.48	1.5	9	8	0.75	6 28309 12605 6

Bolt-on

	PID	LB	KG		L	W	H	UPC
AL	CM810SA	6.60	3.00	in	9.75	4.9	1.37	6 28309 12401 4
ZN	CM810SZ	15.86	7.20	mm	248	125	35	6 28309 12147 1

Weld-on

	PID	LB	KG		L	W	H	D	D1	W1	UPC
AL	CMZL18BGA	8.09	3.67	mm	454	100	32	204.8	26.2	17.5	6 28309 25525 1
MG	CMZL18BGM	5.72	2.59								6 28309 25530 5
ZN	CMZL18BGZ	18.56	8.42	in	17.87	3.93	1.25	8.06	1.03	0.69	6 28309 25520 6

Bolt-on

	PID	LB	KG		L	W	H	D	ID	UPC
AL	CMH20BA	8.00	3.60	in	12	6	1.3	6	0.87	6 28309 24209 1
ZN	CMH20BZ	18.90	8.50	mm	305	152	48	152	22	6 28309 24131 5

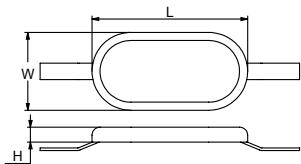
Bolt-on

	PID	LB	KG		L	W	H	D	ID	UPC
MG	CMMG5GM	5.04	2.29	mm	259	132	66	336	16	6 28309 15548 3
				in	10.2	5.2	2.6	13.2	0.63	

Combo

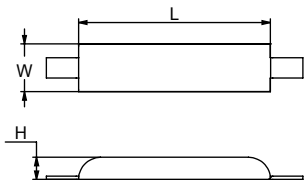
BOLT HOLES CAN BE ADDED ON STRAPS AS REQUIRED

HULL anodes



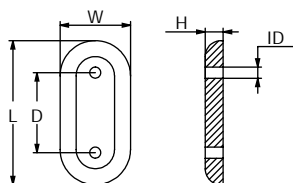
	PID	LB	KG		L	W	H	UPC	
AL	CM812125A	7.90	3.60	in	12	6	1.15	6	28309 12335 2
ZN	CM812125Z	19.50	9.00	mm	305	152	29	6	28309 12491 5

Weld-on



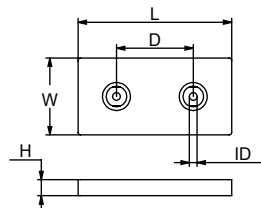
	PID	LB	KG		L	W	H	UPC	
AL	CMZ19A	10.00	4.60	in	25	3	1.2	6	28309 11395 7
ZN	CMZ19Z	22.00	10.00	mm	635	76	31	6	28309 11212 7

Weld-on



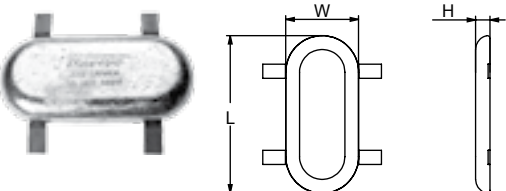
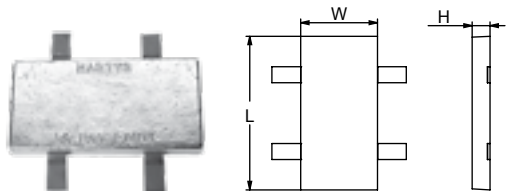
	PID	LB	KG		L	W	H	D	ID	UPC
AL	CMZ24BSA	8.94	4.06	in	14	6.25	1.25	5	0.5	6 28309 12562 2
ZN	CMZ24BSZ	23.00	10.50	mm	356	159	32	127	13	6 28309 12482 3

Bolt-on



	PID	LB	KG		L	W	H	D	ID	UPC
AL	CMZ01BSA	9.8	4.44	in	12	6	1.25	6	0.62	6 28309 11382 7
ZN	CMZ01BSZ	24.1	10.93	mm	305	152	32	152	16	6 28309 11193 9

Bolt-on



	PID	LB	KG		L	W	H	UPC	
AL	CMZ02A	10.55	4.79	in	12	6	1.38	6	28309 11383 4
ZN	CMZ02Z	23.50	10.86	mm	305	152	35	6	28309 11195 3

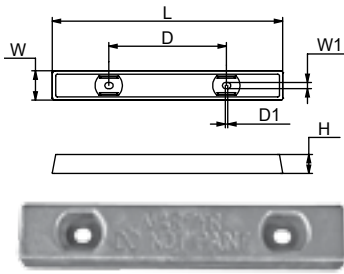
Weld-on

	PID	LB	KG		L	W	H	UPC	
AL	CMZ22A	11.10	5.19	in	14	6.5	1.3	6	28309 11396 4
ZN	CMZ22Z	23.50	10.86	mm	356	165	33	6	28309 11214 1

Weld-on

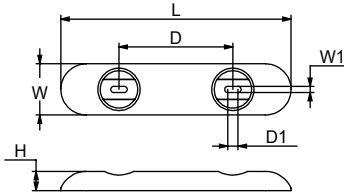
BOLT HOLES CAN BE ADDED ON STRAPS AS REQUIRED

HULL anodes



	PID	LB	KG		L	W	W1	H	D	D1	UPC
AL	CMP5B2BA	11.80	5.36	mm	610	79	16	51	311	6	6 28309 11810 5
ZN	CMP5B2BZ	25.00	11.40	in	24	3.1	0.63	2	12.25	0.25	6 28309 11453 4

Bolt-on



	PID	LB	KG		L	W	W1	H	D	D1	UPC
ZN	CMZD72BZ	25.80	11.70	mm	455	102	19	56	226	9	6 28309 12625 4
				in	17.9	4	0.73	2.2	8.9	0.35	

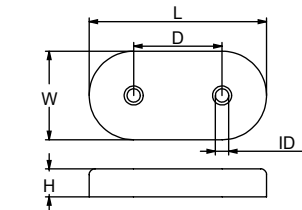
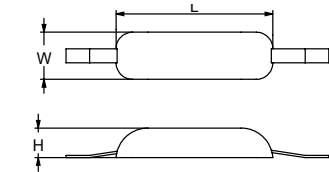
Bolt-on



	PID	LB	KG		L	W	H	UPC
AL	CMZ26A	11.67	5.30	mm	338	109	57	6 28309 11398 8
ZN	CMZ26Z	26.00	11.79	in	13.3	4.3	2.25	6 28309 11944 7

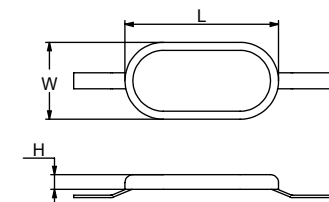
Weld-on

** Available in either steel or aluminum weld-on straps.**



	PID	LB	KG		L	W	H	D	ID	UPC
ZN	CMH19BZ	26.70	12.00	mm	305	152	48	152	22	6 28309 24130 8
				in	12	6	1.9	6	0.87	

Bolt-on



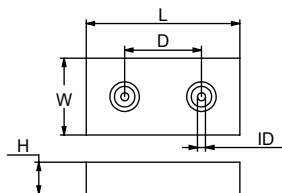
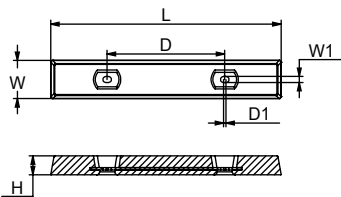
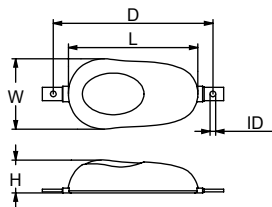
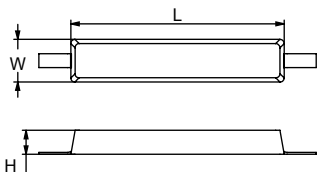
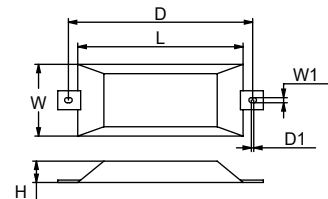
	PID	LB	KG		L	W	H	UPC
AL	CM812A	11.45	5.20	mm	305	152	43	6 28309 18129 1
ZN	CM812Z	27.00	12.50	in	12	6	1.7	6 28309 12148 8

Weld-on



BOLT HOLES CAN BE ADDED ON STRAPS AS REQUIRED

HULL anodes



	PID	LB	KG		L	W	W1	H	D	D1	UPC
AL	CMM120BA	12.3	5.6	mm	350	152	18	45	390	4	6 28309 24223 7
ZN	CMM120BZ	30.0	13.5	in	13.75	6	0.71	1.75	15.37	0.5	6 28309 24136 0

Combo

	PID	LB	KG		L	W	H	UPC
AL	CMMA2204A	16.00	7.30	mm	508	101	57	6 28309 11409 1
ZN	CMMA2204Z	36.50	16.50	in	20	4	2.25	6 28309 11493 0

Weld-on

	PID	LB	KG		L	W	H	D	ID	UPC
MG	CMMG10GM	9.97	4.53	mm	308	168	78	380	14	6 28309 15546 9
				in	12	6.6	3.1	15	0.53	

Combo

With Plastisol Coating

	PID	LB	KG		L	W	W1	H	D	ID	UPC
AL	CMP7B2BSA /CMZHC50A	19.8	8.9	mm	609	102	16	51	311	6	6 28309 11811 2
ZN	CMP7B2BSZ /CMZHC50Z	45.0	20.5	in	24	4	0.62	2	12.25	0.25	6 28309 11454 1

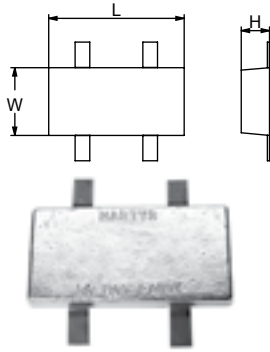
Bolt-on

	PID	LB	KG		L	W	H	D	ID	UPC
AL	CMZHC47A /CMZHC42A	18.10	8.23	mm	305	152	64	152	16	6 28309 12581 3
ZN	CMZHC47Z /CMZHC42Z	45.00	20.50	in	12	6	2.5	6	0.62	6 28309 11227 1

Bolt-on

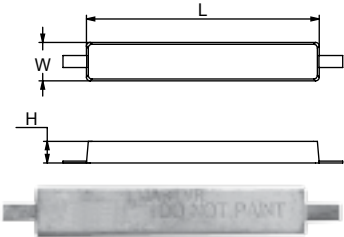
BOLT HOLES CAN BE ADDED ON STRAPS AS REQUIRED

HULL anodes



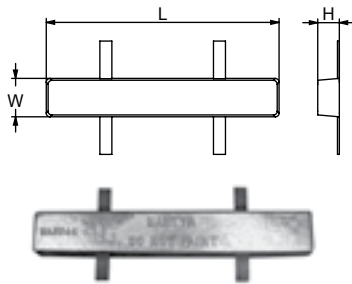
	PID	LB	KG		L	W	H	UPC
AL	CMZHS47A/CMZHS42A	18.10	8.23	mm	305	152	64	6 28309 11403 9
ZN	CMZHS47Z/CMZHS42Z	45.00	20.50	in	12	6	2.5	6 28309 11229 5

Weld-on



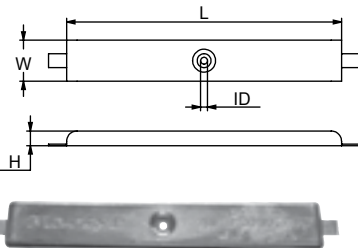
	PID	LB	KG		L	W	H	UPC
AL	CMMA2244LA/CMZHS50A	19.7	8.75	mm	616	101	57	6 28309 12509 7
ZN	CMMA2244LZ/CMZHS50Z	47.0	21.0	in	24.25	4	2.25	6 28309 13015 2

Weld-on



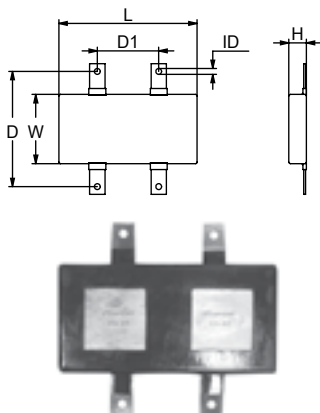
	PID	LB	KG		L	W	H	UPC
AL	CMMA2244SA	19.70	8.75	mm	609	101	50	6 28309 11410 7
ZN	CMMA2244SZ	41.00	21.00	in	24	4	2	6 28309 11806 8

Weld-on



	PID	LB	KG		L	W	H	ID	UPC
AL	CM260SA	25.80	11.60	mm	800	120	43	18	6 28309 24163 6
ZN	CM260SZ	60.00	27.20	in	31.5	4.75	1.62	0.75	6 28309 24098 1

Combo



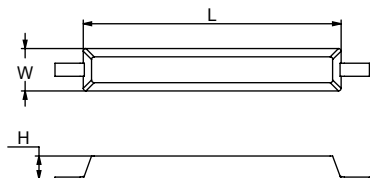
	PID	LB	KG		L	W	H	D	D1	ID	UPC
MG	CMMG24GM	25.90	11.76	mm	457	229	58	381	203	19	6 28309 16592 5
				in	18	9	2.25	15	8	0.75	

Combo

With Plastisol Coating

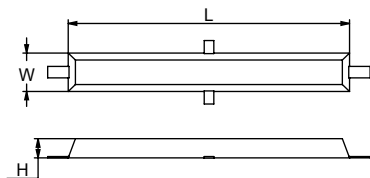
BOLT HOLES CAN BE ADDED ON STRAPS AS REQUIRED

HULL anodes



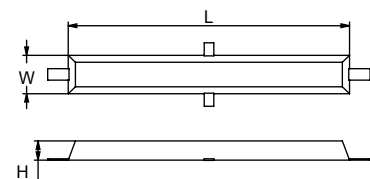
	PID	LB	KG		L	W	H	UPC
AL	CMMA3305SA	32.10	14.65	mm	745	119	66	6 28309 12862 3
ZN	CMMA3305SZ	86.50	39.30	in	29.3	4.7	2.6	6 28309 12056 6

Weld-on



	PID	LB	KG		L	W	H	UPC
AL	CMMA3365CSA	38.30	17.40	mm	930	127	64	6 28309 11414 5
ZN	CMMA3365CSZ	103.00	46.80	in	36.6	5	2.5	6 28309 11945 4

Weld-on

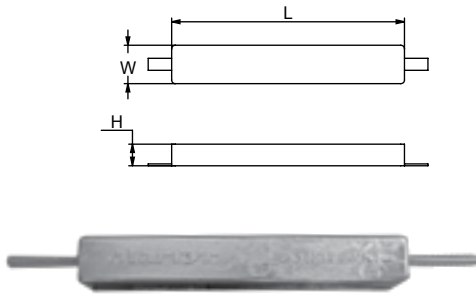


	PID	LB	KG		L	W	H	UPC
AL	CMMA4545CSA	98.00	44.50	mm	1379	127	109	6 28309 12547 9
ZN	CMMA4545CSZ	264.00	120.00	in	54.3	5	4.3	6 28309 12548 6

Weld-on

BOLT HOLES CAN BE ADDED ON STRAPS AS REQUIRED

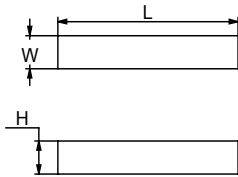
BALLAST TANK anodes



	PID	LB	KG		L	W	H	UPC
AL	CMMA2602SA	25.00	11.00	mm	1524	50	50	6 28309 12049 8
ZN	CMMA2602SZ	55.00	25.00	in	60	2	2	6 28309 12093 1
AL	CMMA3602SA	35.00	16.00	mm	1524	64	76	6 28309 24581 8
ZN	CMMA3602SZ	85.00	38.50	in	60	2.5	3	6 28309 24470 5
AL	CMMA31003A	115.00	52.00	mm	2540	89	83	6 28309 12543 1
ZN	CMMA31003Z	280.00	127.00	in	100	3.5	3.25	6 28309 12544 8
AL	CMMA41004A	140.00	63.50	mm	2540	102	95	6 28309 12141 9
ZN	CMMA41004Z	335.00	152.00	in	100	4	3.75	6 28309 12546 2

Available in any length & weight up to the maximum size shown. 2602S & 3602S use 0.5"rod, 31003 uses 0.75"rod.

CABLE anodes

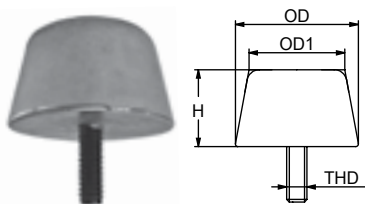


	PID	LB	KG		L	W	H	UPC
AL	CMTYPE3A	96.00	211.20	mm	1120	200	200	6 28309 24255 8
ZN	CMTYPE3Z	551.00	250.00	in	44	7.87	7.87	6 28309 24150 6

Custom cable anodes available upon request. Please contact for details. Cable diameter available in 1/2", 3/8", 5/8", and 5/16".

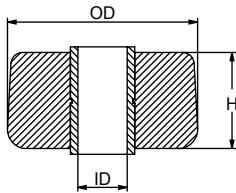
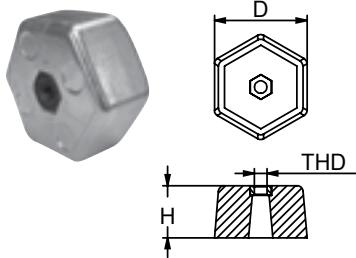
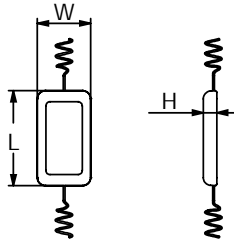


CONDENSER anodes



	PID	LB	KG		OD	OD1	H	THD	UPC
AL	CMC6C50BA	0.29	0.13	mm	50	38	30	5/16 -24	6 28309 24195 7
ZN	CMC6C50BZ	0.73	0.33	in	1.97	1.5	1.18	UNC	6 28309 24119 3
AL	CMC6C75BA	0.69	0.31	mm	75	62	30	5/16 -24	6 28309 24196 4
ZN	CMC6C75BZ	1.76	0.80	in	2.95	2.42	1.18	UNC	6 28309 24120 9

BOLT HOLES CAN BE ADDED ON STRAPS AS REQUIRED



Available in two insert size options.

Please specify hole size: $\frac{5}{8}$ " to fit $\frac{1}{2}$ " bolt or $\frac{1}{2}$ " to fit $\frac{3}{8}$ " bolt

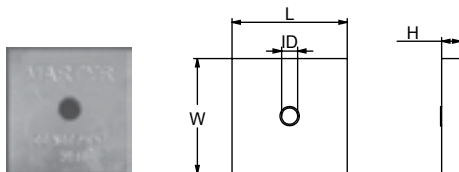
CRAB TRAP anodes

	PID	LB	KG		L	W	H	UPC
AL	CMZCT2WA	0.70	0.32	mm	177	25	19	6 28309 12564 6
ZN	CMZCT2WZ	1.70	0.75	in	7	1	0.75	6 28309 11224 0

	PID	LB	KG		L	W	THD	UPC
AL	CMCTHBA	1.10	0.50	mm	76	43	1/2-13	6 28309 12725 1
ZN	CMCTHBZ	2.73	1.24	in	3	1.62	UNC	6 28309 13001 5

HEAT EXCHANGER anodes

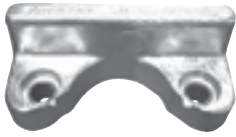
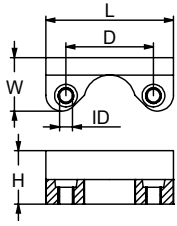
	PID	LB	KG		OD	H	UPC
AL	CMH2B2A	0.30	0.15	mm	50	25	6 28309 24210 7
ZN	CMH2B2Z	0.80	0.35	in	2	1	6 28309 24132 2
AL	CMH2B3A	0.70	0.30	mm	76	25	6 28309 24211 4
ZN	CMH2B3Z	2.10	0.95	in	3	1	6 28309 24133 9
AL	CMH2B4A	1.30	0.60	mm	101	25	6 28309 24212 1
ZN	CMH2B4Z	3.20	1.45	in	4	1	6 28309 24134 6
AL	CMH2B5A	2.00	0.90	mm	127	25	6 28309 12859 3
ZN	CMH2B5Z	5.60	2.55	in	5	1	6 28309 12012 2
AL	CMH2B6A	3.00	1.35	mm	152	25	6 28309 11954 6
ZN	CMH2B6Z	7.10	3.20	in	6	1	6 28309 24469 9
AL	CMH2B9A	6.70	3.05	in	9	1	6 28309 12540 0
AL	CMH2B11A	10.10	4.60	mm	279	25	6 28309 24578 8
ZN	CMH2B11Z	24.00	10.90	in	11	1	6 28309 24468 2



	PID	LB	KG		L	W	H	UPC
AL	CMH1B6GA	3.80	1.70	mm	152	152	25	6 28309 11930 0
ZN	CMH1B6GZ	9.00	4.10	in	6	6	1	6 28309 12619 3

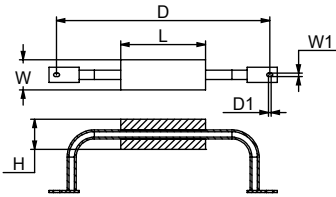
Available in two insert size options. Please specify hole size: $\frac{5}{8}$ " to fit $\frac{1}{2}$ " bolt or $\frac{1}{2}$ " to fit $\frac{3}{8}$ " bolt

OLYMPIC™ DRIVE anodes



	PID	LB	KG		L	W	H	D	ID	UPC
AL	CMOLYA	2.11	0.96	mm	158	66	66	108	16	6 28309 24224 4
ZN	CMOLYZ	4.50	2.05	in	6.2	2.6	2.6	4.25	0.62	6 28309 12014 6
AL	CMOLY1HA	2.65	1.20	mm	158	79	66	108	16	6 28309 10763 5
ZN	CMOLY1HZ	6.30	2.86	in	6.2	3.1	2.6	4.25	0.62	6 28309 10764 2

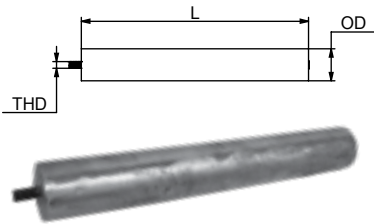
PLATFORM/STANDOFF anodes



	PID	LB	KG		L	W	H	D	ID	UPC	
AL	TYPE1	211.00	96.00	mm	1120	200	22	200	1970	18	6 28309 24158 2
				in	44	7.87	0.87	7.87	77.6	0.71	
AL	TYPE2	105.60	48.00	mm	560	200	22	200	1410	18	6 28309 24159 9
				in	22	7.87	0.87	7.87	77.6	0.71	

*Please enquire about custom sizes.

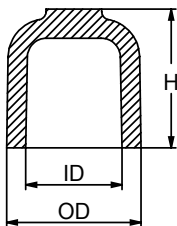
HEATER TREATER anodes



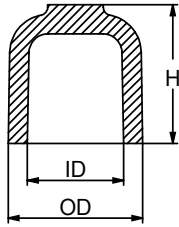
	PID	LB	KG		L	OD	THD	UPC
AL	CMHT321A	16.50	7.50	mm	541	76	5/8-18	6 28309 12530 1
ZN	CMHT321Z	39.00	17.70	in	21.5	3	UNF	6 28309 11951 5
AL	CMHT330A	23.50	10.70	mm	775	76	3/4-10	6 28309 11805 1
ZN	CMHT330Z	56.00	25.40	in	30	3	UNC	6 28309 12848 7

Type 321 has male 5/8 NF thread on one end and female 5/8 NF thread on the other end. Type 330 has 3/4 NC female thread at both ends. Different length of rods are available on request.

PROP NUT anodes

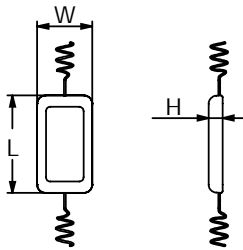


	PID	LB	KG		ID	OD	H	UPC
AL	CMPN01A	1.70	0.75	mm	63	85	92	6 28309 12382 6
ZN	CMPN01Z	4.00	1.80	in	2.5	3.37	3.62	6 28309 11476 3
AL	CMPN02A	2.30	1.05	mm	73	95	101	6 28309 12383 3
ZN	CMPN02Z	4.90	2.23	in	2.87	3.75	4	6 28309 11477 0
AL	CMPN03A	2.50	1.15	mm	82	104	101	6 28309 12384 0
ZN	CMPN03Z	6.00	2.70	in	3.25	4.12	4	6 28309 11478 7
AL	CMPN04A	3.20	1.45	mm	95	117	114	6 28309 12385 7
ZN	CMPN04Z	7.50	3.40	in	3.75	4.62	4.5	6 28309 11479 4
AL	CMPN05A	4.60	2.10	mm	107	133	127	6 28309 12386 4
ZN	CMPN05Z	11.00	5.00	in	4.25	5.25	5	6 28309 11480 0



PROP NUT anodes

	PID	LB	KG		ID	OD	H	UPC
AL	CMPN06A	4.80	2.20	mm	117	142	139	6 28309 12387 1
ZN	CMPN06Z	11.50	5.20	in	4.62	5.62	5.5	6 28309 11481 7
AL	CMPN07A	5.50	2.50	mm	127	152	152	6 28309 12388 8
ZN	CMPN07Z	13.00	5.90	in	5	6	6	6 28309 11482 4
AL	CMPN08A	7.00	3.20	mm	139	168	161	6 28309 12389 5
ZN	CMPN08Z	17.40	7.90	in	5.5	6.62	6.37	6 28309 11483 1
AL	CMPN09A	8.20	3.70	mm	152	180	171	6 28309 12390 1
ZN	CMPN09Z	19.50	8.85	in	6	7.12	6.75	6 28309 11484 8
AL	CMPN10A	10.50	4.75	mm	165	196	177	6 28309 12101 3
ZN	CMPN10Z	25.00	11.35	in	6.5	7.75	7	6 28309 11485 5
AL	CMPN11A	11.80	5.35	mm	177	206	206	6 28309 12391 8
ZN	CMPN11Z	28.00	12.70	in	7	8.12	8.12	6 28309 11486 2
AL	CMPN12A	15.90	7.20	mm	190	222	228	6 28309 12392 5
ZN	CMPN12Z	38.50	17.50	in	7.5	8.75	9	6 28309 11487 9
AL	CMPN13AA	0.80	0.35	mm	50	69	73	6 28309 12393 2
ZN	CMPN13AZ	2.00	0.90	in	2	2.75	2.87	6 28309 11488 6
AL	CMPN13BA	1.10	0.50	mm	57	76	76	6 28309 24241 1
ZN	CMPN13BZ	2.50	1.15	in	2.25	3	3	6 28309 24142 1



**Available with or*



without wires

PLATE STOCK anodes

	PID	LB	KG		L	W	H	UPC
AL	CMPMA/CMPMWA	0.78	0.35	mm	114	64	17	6 28309 24363 0
ZN	CMPMZ/CMPMWZ	2.00	0.90	in	4.5	2.5	0.65	6 28309 11265 3
AL	CMPNA/CMPNWA	1.26	0.57	mm	152	76	19	6 28309 11087 7
ZN	CMPNZ/CMPNWZ	3.25	1.48	in	6	3	0.75	6 28309 11267 7
AL	CMPOA/CMPOWA	1.70	0.77	mm	152	102	19	6 28309 24247 3
ZN	CMPOZ/CMPOWZ	4.38	1.99	in	6	4	0.75	6 28309 11269 1
AL	CMPPA/CMPPWA	3.59	1.63	mm	229	127	21	6 28309 24248 0
ZN	CMPPZ/CMPPWZ	9.25	4.20	in	9	5	0.8	6 28309 11272 1
AL	CMP0515115A	0.89	0.40	mm	288	38	13	6 28309 24230 5
ZN	CMP0515115Z	2.21	1.00	in	11.5	1.5	0.5	6 28309 11973 7
AL	CMP051512A	0.93	0.42	mm	305	38	13	6 28309 24231 2
ZN	CMP051512Z	2.30	1.04	in	12	1.5	0.5	6 28309 11237 0
AL	CMP05204A	0.41	0.18	mm	100	50	13	6 28309 24232 9
ZN	CMP05204Z	1.02	4.63	in	4	2	0.5	6 28309 11947 8
AL	CMP05212A	1.24	0.56	mm	305	50	13	6 28309 24233 6
ZN	CMP05212Z	3.07	1.39	in	12	2	0.5	6 28309 11948 5
AL	CMP05224A	2.48	1.13	mm	710	50	13	6 28309 24234 3
ZN	CMP05224Z	6.14	2.79	in	24	2	0.5	6 28309 11418 3
AL	CMP05303A	0.50	0.23	mm	76	76	13	6 28309 11443 5
ZN	CMP05303Z	1.25	0.57	in	3	3	0.5	6 28309 11240 0

PLATE STOCK *anodes*



	PID	LB	KG		L	W	H	UPC
AL	CMP05306A	0.90	0.41	mm	152	76	13	6 28309 11444 2
ZN	CMP05306Z	2.20	1.00	in	6	3	0.5	6 28309 11242 4
AL	CMP05406A	1.24	0.56	mm	152	100	13	6 28309 24235 0
ZN	CMP05406Z	3.07	1.39	in	6	4	0.5	6 28309 11246 2
AL	CMP05312A	1.86	0.84	mm	305	76	13	6 28309 11244 8
ZN	CMP05312Z	4.61	2.10	in	12	3	0.5	6 28309 11244 8
AL	CMP05606A	1.90	0.86	mm	152	152	13	6 28309 11445 9
ZN	CMP05606Z	4.80	2.15	in	6	6	0.5	6 28309 11247 9
AL	CMP05612A	3.80	1.72	mm	305	152	13	6 28309 12035 1
ZN	CMP05612Z	9.50	4.31	in	12	6	0.5	6 28309 11249 3
AL	CMP075106A	0.46	0.21	mm	152	25	19	6 28309 24237 4
ZN	CMP075106Z	1.15	0.52	in	6	1	0.75	6 28309 12020 7
AL	CMP075303A	0.70	0.32	mm	76	76	19	6 28309 11931 7
ZN	CMP075303Z	1.75	0.79	in	3	3	0.75	6 28309 11251 6
AL	CMP075306A	1.40	0.64	mm	152	76	19	6 28309 11447 3
ZN	CMP075306Z	3.50	1.59	in	6	3	0.75	6 28309 11252 3
AL	CMP075606A	2.60	1.18	mm	152	152	19	6 28309 12009 2
ZN	CMP075606Z	6.55	2.97	in	6	6	0.75	6 28309 11254 7
AL	CMP075612A	5.60	2.54	mm	305	152	19	6 28309 12010 8
ZN	CMP075612Z	14.00	6.35	in	12	6	0.75	6 28309 11255 4
AL	CMP1206A	1.24	0.56	mm	152	50	25	6 28309 12409 0
ZN	CMP1206Z	3.07	1.39	in	6	2	1	6 28309 11256 1
AL	CMP1303A	0.90	0.41	mm	76	76	25	6 28309 11449 7
ZN	CMP1303Z	2.25	1.01	in	3	3	1	6 28309 11257 8
AL	CMP1304A	1.24	0.56	mm	104	76	25	6 28309 12554 7
ZN	CMP1304Z	3.07	1.39	in	4	3	1	6 28309 12165 5
AL	CMP1306A	1.80	0.82	mm	152	76	25	6 28309 11450 3
ZN	CMP1306Z	4.50	2.04	in	6	3	1	6 28309 11259 2
AL	CMP1406A	2.44	1.10	mm	152	104	25	6 28309 12555 4
ZN	CMP1406Z	6.11	2.77	in	6	4	1	6 28309 11260 8
AL	CMP1606A	3.60	1.63	mm	152	152	25	6 28309 12007 8
ZN	CMP1606Z	9.00	4.08	in	6	6	1	6 28309 11261 5
AL	CMP1612A	7.20	3.27	mm	305	152	25	6 28309 12008 5
ZN	CMP1612Z	18.00	8.16	in	12	6	1	6 28309 11262 2
AL	CMP075406A	1.84	0.84	mm	152	104	20	6 28309 12405 2
ZN	CMP075406Z	4.60	2.09	in	6	4	0.8	6 28309 12102 0
AL	CMP11504A	0.60	0.27	mm	104	38	25	6 28309 12407 6
ZN	CMP11504Z	1.50	0.68	in	4	1.5	1	6 28309 12169 3
AL	CMP11505A	0.80	0.36	mm	125	38	25	6 28309 12408 3
ZN	CMP11505Z	2.00	0.91	in	5	1.5	1	6 28309 12203 4

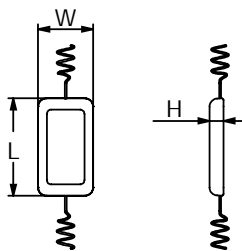
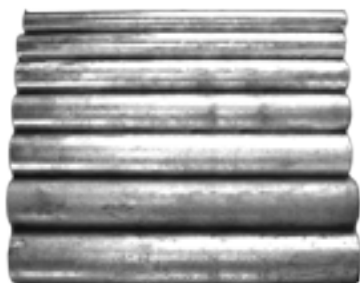
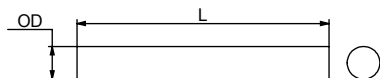


PLATE STOCK anodes

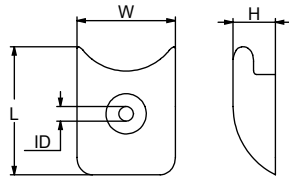
	PID	LB	KG		L	W	H	UPC
AL	CMP166A	3.52	1.60	mm	155	155	25	6 28309 12556 1
ZN	CMP166Z	8.80	3.99	in	6.12	6.12	1	6 28309 12236 2
AL	CMP631A	1.76	0.80	mm	155	80	25	6 28309 24240 4
ZN	CMP631Z	4.41	2.00	in	6.12	3.2	1	6 28309 12193 8
AL	CMP05306WA	0.92	0.42	mm	152	76	13	6 28309 11444 2
ZN	CMP05306WZ	2.30	1.04	in	6	3	0.5	6 28309 11242 4
AL	CMP05606WA	1.84	0.84	mm	152	152	13	6 28309 11445 9
ZN	CMP05606WZ	4.61	2.10	in	6	6	0.5	6 28309 11247 9
AL	CMP05612WA	3.68	1.67	mm	305	152	13	6 28309 24236 7
ZN	CMP05612WZ	9.20	4.19	in	12	6	0.5	6 28309 11250 9
AL	CMP075306WA	1.38	0.63	mm	152	76	19	6 28309 24238 1
ZN	CMP075306WZ	3.46	1.57	in	6	3	0.75	6 28309 11253 0
AL	CMP075406WA	1.84	0.84	mm	152	101	20	6 28309 24239 8
ZN	CMP075406WZ	4.61	2.10	in	6	4	0.8	6 28309 12406 9



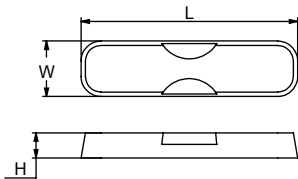
ROD STOCK anodes

	PID	LB	KG		L	OD	UPC
ZN	CMR0512Z	0.60	0.27	mm	305	13	6 28309 12173 0
				in	12	0.5	
ZN	CMR062512Z	0.96	0.43	mm	305	16	6 28309 12234 8
				in	12	0.62	
ZN	CMR07512Z	1.35	0.61	mm	305	19	6 28309 12207 2
				in	12	0.75	
ZN	CMR1524Z	10.80	4.90	mm	610	38	6 28309 11950 8
				in	24	1.5	
ZN	CMR224Z	19.30	8.76	mm	610	50	6 28309 11427 5
				in	24	2	
ZN	CMR324Z	43.20	19.60	mm	610	76	6 28309 11428 2
				in	24	3	
ZN	CMR037536Z	1.01	0.46	mm	914	9	6 28309 12160 0
				in	36	0.37	
ZN	CMR0536Z	1.80	0.82	mm	914	13	6 28309 12157 0
				in	36	0.5	
ZN	CMR062539Z	3.14	1.42	mm	1000	16	6 28309 12158 7
				in	39	0.62	
ZN	CMR07539Z	4.43	2.01	mm	1000	19	6 28309 12161 7
				in	39	0.75	
ZN	CMR087539Z	5.93	2.69	mm	1000	22	6 28309 12162 4
				in	39	0.87	
ZN	CMR139Z	7.66	3.48	mm	1000	25	6 28309 12156 3
				in	39	1	
ZN	CMR12539Z	12.55	5.70	mm	1000	32	6 28309 12159 4
				in	39	1.25	

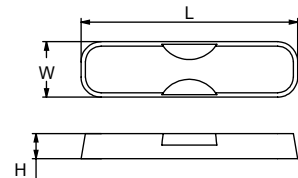
WALTER KEEL anodes



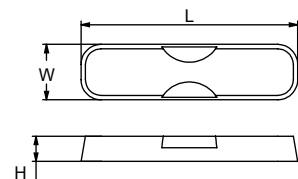
	PID	LB	KG		L	W	H	ID	UPC
AL	CMKK1A	0.41	0.19	mm	84	65	29	10	6 28309 11495 4
MG	CMKK1M	0.28	0.13						6 28309 24340 1
ZN	CMKK1Z	1.02	0.46	in	3.32	2.57	1.12	0.37	6 28309 19173 3
AL	CMKK2A	0.48	0.22	mm	84	83	29	10	6 28309 19174 0
MG	CMKK2M	0.34	0.15						6 28309 24341 8
ZN	CMKK2Z	1.21	0.55	in	3.22	3.25	1.12	0.37	6 28309 11381 0
AL	CMKK3A	1.25	0.57	mm	137	89	41	9	6 28309 19175 7
MG	CMKK3M	0.87	0.39						6 28309 24342 5
ZN	CMKK3Z	3.12	1.42	in	5.4	3.5	1.62	0.35	6 28309 11473 2



	PID	LB	KG		L	W	H	UPC
AL	CMX453A	0.08	0.04	mm	86	22	10	6 28309 19176 4
MG	CMX453M	0.06	0.03					6 28309 24395 1
ZN	CMX453Z	0.21	0.10	in	3.37	0.87	0.37	6 28309 11190 8



	PID	LB	KG		L	W	H	UPC
AL	CMX473A	0.25	0.11	mm	172	32	10	6 28309 19177 1
MG	CMX473M	0.18	0.08					6 28309 24396 8
ZN	CMX473Z	0.63	0.29	in	6.75	1.25	0.37	6 28309 11191 5

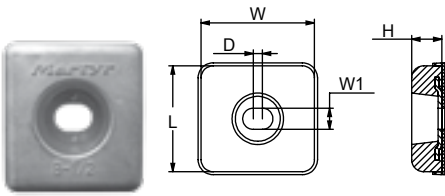


	PID	LB	KG		L	W	H	UPC
AL	CMX58A	0.29	0.13	mm	159	22	12	6 28309 19178 8
MG	CMX58M	0.20	0.10					6 28309 24397 5
ZN	CMX58Z	0.73	0.33	in	6.25	0.87	0.5	6 28309 11192 2

COMMERCIAL

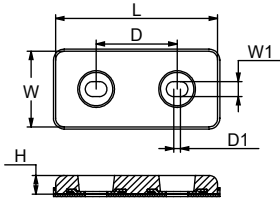
**HULL ANODES
(SPECIAL ORDERS)**

HULL anodes



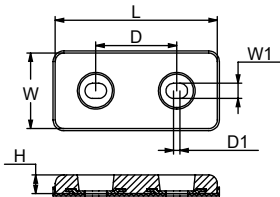
	PID	LB	KG		L	W	W1	H	D	UPC
ZN	JDP320220Z	1.28	0.58	mm	75	70	14	20	6	6 28309 23990 9
				in	3	2.8	0.55	0.8	0.24	

Bolt-on



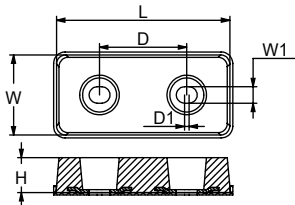
	PID	LB	KG		L	W	W1	H	D	D1	UPC
ZN	JDP320221Z	2.35	1.07	mm	150	70	14	18	75	6	6 28309 23991 6
				in	5.9	2.8	0.55	0.7	2.95	0.24	

Bolt-on



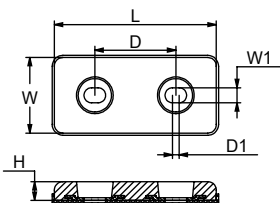
	PID	LB	KG		L	W	W1	H	D	D1	UPC
AL	JDP320222A	1.18	0.54	mm	150	70	14	20	75	6	6 28309 24031 8
ZN	JDP320222Z	2.68	1.22	in	5.9	2.8	0.55	0.8	2.95	0.24	

Bolt-on



	PID	LB	KG		L	W	W1	H	D	D1	UPC
AL	JDB2GBA	1.30	0.60	mm	150	75	14	25	75	4	6 28309 24009 7
ZN	JDB2GBZ	3.20	1.50	in	2.9	3	0.55	1	2.95	0.16	

Bolt-on

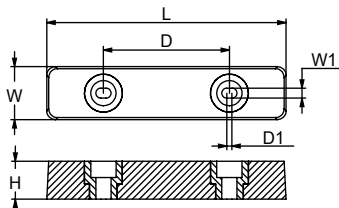


	PID	LB	KG		L	W	W1	H	D	D1	UPC
ZN	JDP320223Z	3.28	1.49	mm	150	70	14	25	75	6	6 28309 23993 0
				in	5.9	2.8	0.55	1	2.95	0.24	

Bolt-on

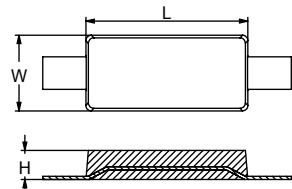


HULL anodes



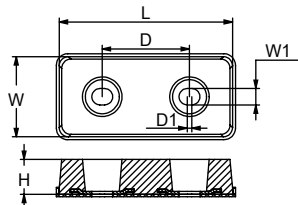
	PID	LB	KG		L	W	W1	H	D	D1	UPC
AL	JDH39SBA	1.32	0.60	mm	190	42	8	30	100	4	6 28309 24020 2
ZN	JDH39SBZ	3.30	1.50	in	7.5	1.62	0.31	1.19	3.94	0.16	6 28309 17199 5

Bolt-on



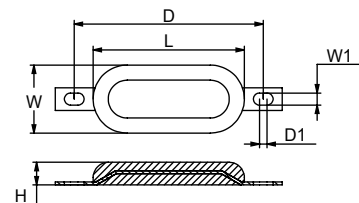
	PID	LB	KG		L	W	H	UPC
AL	JDH24GA	2.00	0.90	mm	150	70	27	6 28309 17356 2
ZN	JDH24GZ	4.20	1.90	in	5.9	2.76	1.1	6 28309 17196 4

Bolt-on



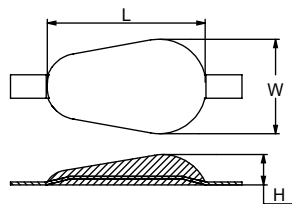
	PID	LB	KG		L	W	W1	H	D	D1	UPC
ZN	JDP320219Z	4.30	1.95	mm	200	100	14	15	110	6	6 28309 23989 3
				in	7.87	3.94	0.55	0.59	4.33	0.24	

Combo



	PID	LB	KG		L	W	W1	H	D	D1	UPC
AL	JDH48GA	1.90	0.90	mm	200	80	16	30	200	10	6 28309 17372 2
ZN	JDH48GZ	4.40	2.00	in	7.87	3.15	0.63	1.18	7.87	0.39	6 28309 17201 5

Bolt-on

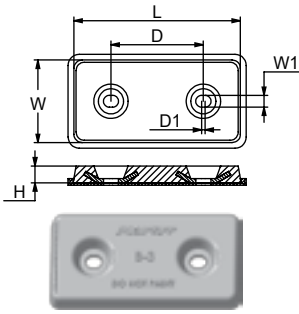


	PID	LB	KG		L	W	H	UPC
AL	JDDM20A	2.00	0.90	mm	169	100	32	6 28309 21525 5
ZN	JDDM20Z	4.85	2.20	in	6.7	4	1.26	6 28309 17167 4

Bolt-on

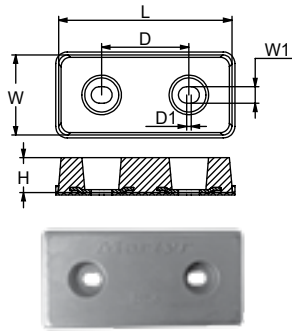
BOLT HOLES CAN BE ADDED ON STRAPS AS REQUIRED

HULL anodes



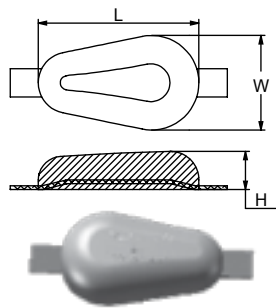
	PID	LB	KG		L	W	W1	H	D	D1	UPC
AL	JDB3GBA	2.30	1.00	mm	200	100	14	20	110	4	6 28309 17323 4
ZN	JDB3GBZ	5.50	2.50	in	7.87	3.94	0.55	0.8	4.33	0.16	6 28309 17152 0

Bolt-on



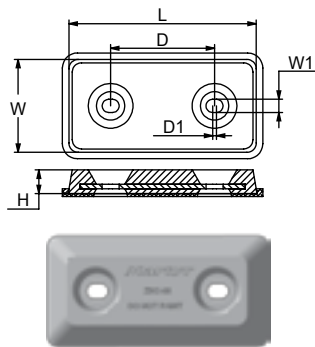
	PID	LB	KG		L	W	W1	H	D	D1	UPC
ZN	JDP320224Z	5.64	2.56	mm	200	100	14	20	110	6	6 28309 23994 7
				in	7.87	3.94	0.55	0.8	4.33	0.24	

Bolt-on



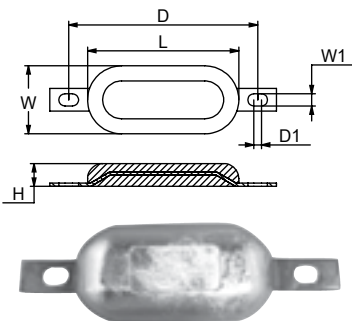
	PID	LB	KG		L	W	H	UPC
AL	JDDM28GBA	2.90	1.30	mm	170	100	40	6 28309 24012 7
ZN	JDDM28GBZ	6.60	3.00	in	6.7	3.9	1.57	6 28309 17171 1

Weld-on



	PID	LB	KG		L	W	W1	H	D	D1	UPC
AL	JDH62GBA	2.90	1.30	mm	200	100	14	25	110	4	6 28309 17387 6
ZN	JDH62GBZ	6.60	3.00	in	7.87	3.94	0.55	1	4.33	0.16	6 28309 17213 8

Bolt-on

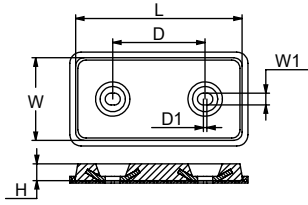


	PID	LB	KG		L	W	W1	H	D	D1	UPC
AL	JDH49GBA	2.20	1.00	mm	200	90	16	30	250	10	6 28309 17373 9
ZN	JDH49GBZ	6.60	3.00	in	7.87	3.54	0.63	1.18	9.84	0.39	6 28309 17202 2

Combo

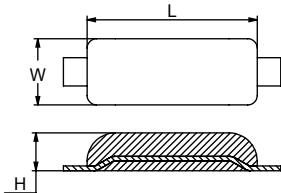
BOLT HOLES CAN BE ADDED ON STRAPS AS REQUIRED

HULL anodes



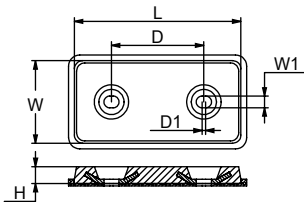
	PID	LB	KG		L	W	W1	H	D	D1	UPC
AL	JDH56GBA	3.10	1.40	mm	200	100	14	25	110	4	6 28309 17378 4
ZN	JDH56GBZ	6.80	3.10	in	7.87	3.94	0.55	1	4.33	0.16	6 28309 17379 1

Bolt-on



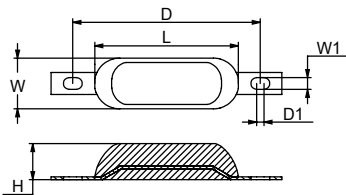
	PID	LB	KG		L	W	H	UPC
AL	JDH10GA	3.10	1.40	mm	180	70	40	6 28309 17343 2
ZN	JDH10GZ	7.50	3.40	in	7.1	2.76	1.57	6 28309 17182 7

Weld-on



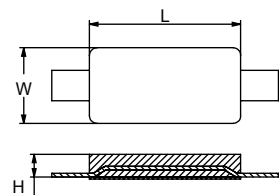
	PID	LB	KG		L	W	W1	H	D	D1	UPC
AL	JDB4GBA	3.30	1.50	mm	200	100	14	30	110	4	6 28309 24010 3
ZN	JDB4GBZ	7.90	3.60	in	7.87	3.94	0.55	1.18	4.33	0.16	6 28309 23968 8

Weld-on



	PID	LB	KG		L	W	W1	H	D	D1	UPC
AL	JDH55GBA	3.70	1.70	mm	200	70	16	50	250	10	6 28309 17377 7
ZN	JDH55GBZ	9.10	4.20	in	7.87	2.75	0.63	1.97	9.84	0.39	6 28309 23984 8

Bolt-on

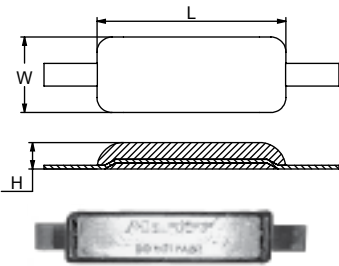


	PID	LB	KG		L	W	H	UPC
AL	JDS4GA	4.20	1.90	mm	200	100	30	6 28309 17411 8
ZN	JDS4GZ	9.20	4.20	in	7.87	3.94	1.18	6 28309 23995 4

Weld-on

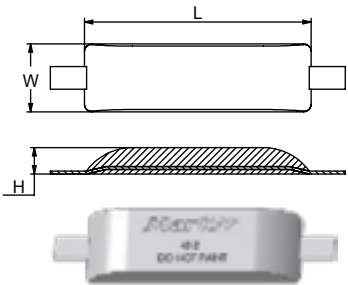
BOLT HOLES CAN BE ADDED ON STRAPS AS REQUIRED

HULL anodes



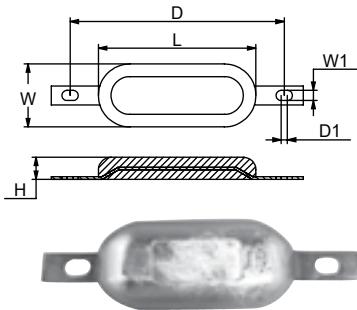
	PID	LB	KG		L	W	H	UPC
AL	JDGBZH02A	5.07	2.30	mm	250	100	35	6 28309 17339 5
ZN	JDGBZH02Z	11.90	5.40	in	9.8	4	1.38	6 28309 17180 3

Weld-on



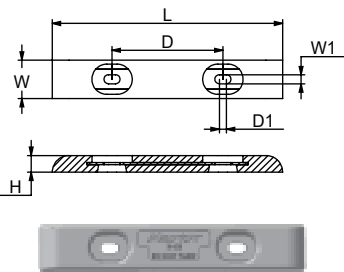
	PID	LB	KG		L	W	H	UPC
AL	JDDM45A	5.00	2.30	mm	300	90	35	6 28309 24013 4
ZN	JDDM45Z	13.00	5.90	in	11.8	3.54	1.38	6 28309 17172 8

Weld-on



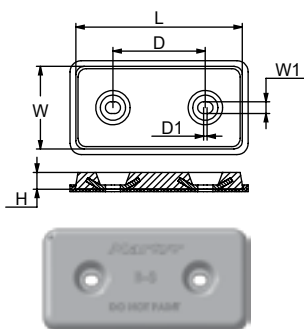
	PID	LB	KG		L	W	W1	H	D	D1	UPC
AL	JDH50GBA	4.62	2.10	mm	250	100	16	35	340	10	6 28309 24023 3
ZN	JDH50GBZ	11.00	5.00	in	9.8	4	0.63	1.38	13.4	0.39	6 28309 17204 6

Combo



	PID	LB	KG		L	W	W1	H	D	D1	UPC
AL	JDH53GBA	5.90	2.70	mm	457	76	18	33	220	14	6 28309 24025 7
ZN	JDH53GBZ	14.50	6.60	in	18	3	0.7	1.3	8.66	0.55	6 28309 17207 7

Bolt-on

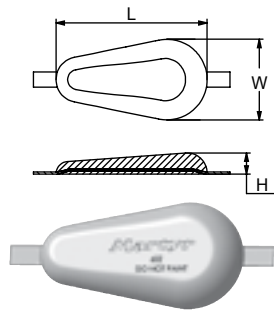


	PID	LB	KG		L	W	W1	H	D	D1	UPC
AL	JDB8GBA	6.40	2.90	mm	300	150	18	25	160	4	6 28309 17326 5
ZN	JDB8GBZ	16.10	7.30	in	11.8	5.9	0.7	1	6.3	0.16	6 28309 17156 8

Bolt-on

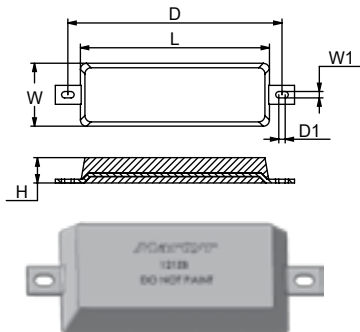
BOLT HOLES CAN BE ADDED ON STRAPS AS REQUIRED

HULL anodes



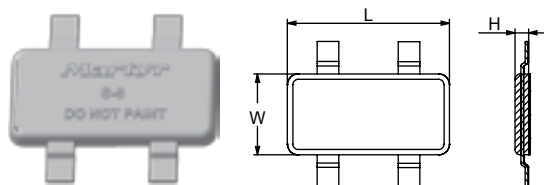
	PID	LB	KG		L	W	H	UPC			
AL	JDDM60GA	6.38	2.90	mm	300	160	42	6	28309 17336 4		
ZN	JDDM60GZ	16.50	7.50	in	11.8	6.3	1.63	6	28309 17173 5		

Weld-on



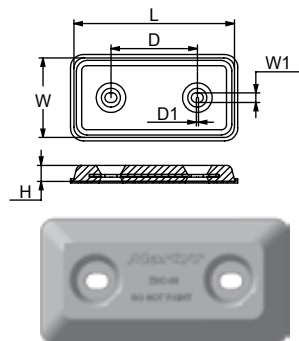
	PID	LB	KG		L	W	W1	H	D	D1	UPC	
AL	JDH61GBA	7.0	3.2	mm	300	100	10	40	340	10	6	28309 17386 9
ZN	JDH61GBZ	17.2	7.8	in	11.8	3.94	0.39	1.57	14	0.39	6	28309 17211 4

Bolt-on



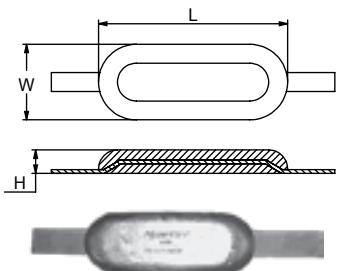
	PID	LB	KG		L	W	H	UPC			
AL	JDS8GA	7.70	3.50	mm	300	150	25	6	28309 24034 9		
ZN	JDS8GZ	17.60	8.00	in	11.8	5.9	1	6	28309 17290 9		

Weld-on



	PID	LB	KG		L	W	W1	H	D	D1	UPC	
AL	JDH63GBA	7.00	3.20	mm	300	150	18	30	160	4	6	28309 17585 6
ZN	JDH63GBZ	17.60	8.00	in	11.8	5.9	0.7	1.18	6.3	0.16	6	28309 17214 5

Bolt-on

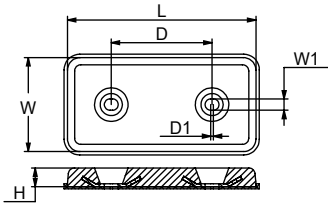


	PID	LB	KG		L	W	H	UPC			
AL	JDH51GA	7.70	3.50	mm	300	120	37	6	28309 17375 3		
ZN	JDH51GZ	17.60	8.00	in	11.8	4.7	1.46	6	28309 17205 3		

Weld-on

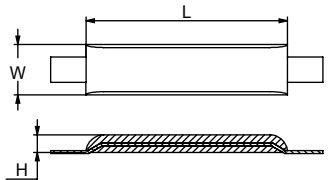
BOLT HOLES CAN BE ADDED ON STRAPS AS REQUIRED

HULL anodes



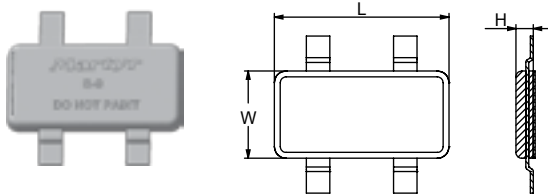
	PID	LB	KG		L	W	W1	H	D	D1	UPC
AL	JDB9GBA	7.00	3.20	mm	300	150	18	30	160	22	6 28309 24011 0
ZN	JDB9GBZ	18.30	8.30	in	11.8	5.9	0.7	1.18	6.3	0.87	6 28309 17157 5

Bolt-on



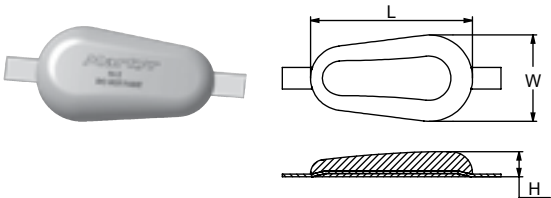
	PID	LB	KG		L	W	H	UPC
AL	JDH01A	8.80	4.00	mm	400	100	35	6 28309 24016 5
ZN	JDH01Z	19.50	9.00	in	15.75	4	1.38	6 28309 23972 5

Weld-on



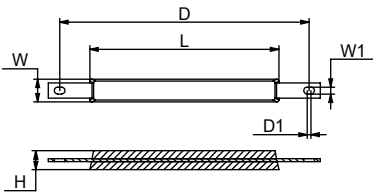
	PID	LB	KG		L	W	H	UPC
AL	JDS9GA	8.80	4.00	mm	300	150	30	6 28309 24036 3
ZN	JDS9GZ	19.80	9.00	in	11.8	5.9	1.18	6 28309 17291 6

Weld-on



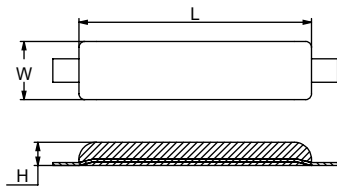
	PID	LB	KG		L	W	H	UPC
AL	JDDM96GA	9.24	4.20	mm	300	150	45	6 28309 24014 1
ZN	JDDM96GZ	22.00	10.00	in	11.8	5.9	1.77	6 28309 17174 2

Weld-on



	PID	LB	KG		L	W	W1	H	D	D1	UPC
AL	JDH47GBA	10.30	4.70	mm	500	60	18	50	660	12	6 28309 24022 6
ZN	JDH47GBZ	23.50	10.70	in	19.7	2.36	0.7	1.97	26	0.47	6 28309 23983 1

Combo



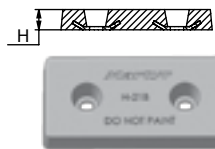
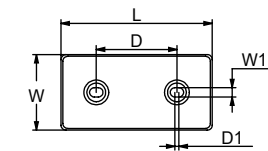
	PID	LB	KG		L	W	H	UPC
AL	JDH7GA	9.90	4.50	mm	400	100	40	6 28309 17391 3
ZN	JDH7GZ	23.50	10.70	in	15.7	3.94	1.57	6 28309 17218 3

Weld-on



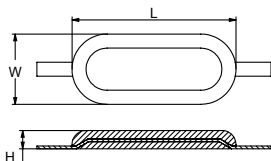
BOLT HOLES CAN BE ADDED ON STRAPS AS REQUIRED

HULL anodes



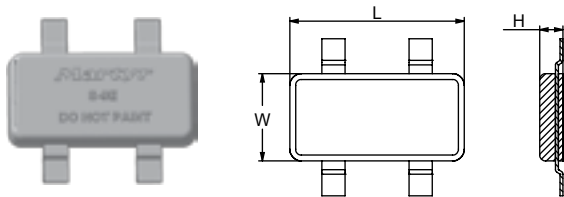
	PID	LB	KG		L	W	W1	H	D	D1	UPC
AL	JDH21GBA	9.2	4.2	mm	300	150	18	40	160	8	6 28309 17350 0
ZN	JDH21GBZ	24.2	11.0	in	11.8	5.9	0.72	1.57	6.3	0.32	6 28309 17188 9

Bolt-on



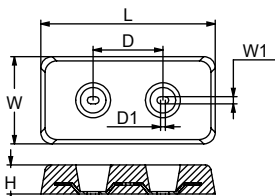
	PID	LB	KG		L	W	H	UPC
AL	JDH52GA	10.80	4.90	mm	350	150	39	6 28309 24024 0
ZN	JDH52GZ	26.40	12.00	in	13.8	5.9	1.5	6 28309 17206 0

Weld-on



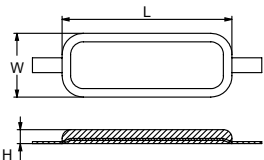
	PID	LB	KG		L	W	H	UPC
AL	JDS9EGA	11.00	5.00	mm	300	150	40	6 28309 24035 6
ZN	JDS9EGZ	26.40	12.00	in	11.8	5.9	1.57	6 28309 17292 3

Weld-on



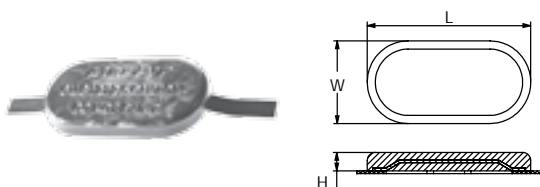
	PID	LB	KG		L	W	W1	H	D	D1	UPC
AL	JDH13GBA	10.8	4.9	mm	300	150	12	50	120	8	6 28309 24017 2
ZN	JDH13GBZ	26.4	12.0	in	11.8	5.9	0.47	2	4.72	0.32	6 28309 17760 7

Bolt-on



	PID	LB	KG		L	W	H	UPC
AL	JDH26GA	11.00	5.00	mm	400	150	33	6 28309 17360 9
ZN	JDH26GZ	27.10	12.30	in	15.7	5.9	1.3	6 28309 23976 3

Weld-on

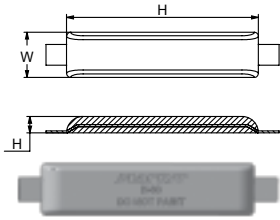


	PID	LB	KG		L	W	H	UPC
AL	JDH36GA	11.20	5.10	mm	305	152	34	6 28309 17364 7
				in	12	6	1.34	

Weld-on

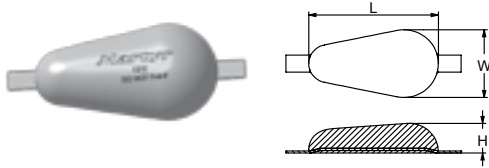
BOLT HOLES CAN BE ADDED ON STRAPS AS REQUIRED

HULL anodes



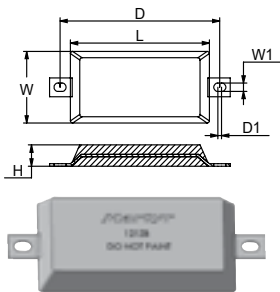
	PID	LB	KG		L	W	H	UPC
AL	JDH60GA	11.90	5.40	mm	465	110	40	6 28309 24026 4
ZN	JDH60GZ	27.50	12.50	in	18.3	4.33	1.57	6 28309 17210 7

Weld-on



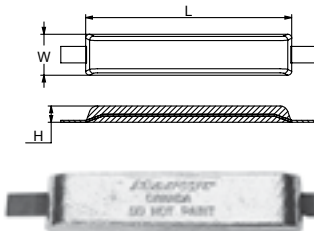
	PID	LB	KG		L	W	H	UPC
AL	JDDM121GA	13.40	6.10	mm	300	160	70	6 28309 17332 6
ZN	JDDM121GZ	27.90	13.00	in	11.8	6.3	2.75	6 28309 17163 6

Weld-on



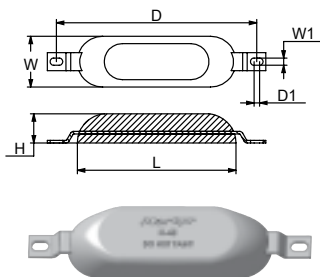
	PID	LB	KG		L	W	W1	H	D	D1	UPC
AL	JDDM121GBA	13.42	6.10	mm	300	152	18	45	345	8	6 28309 17333 3
ZN	JDDM121GBZ	28.60	13.00	in	11.8	6	0.71	1.77	13.58	0.31	6 28309 17164 3

Combo



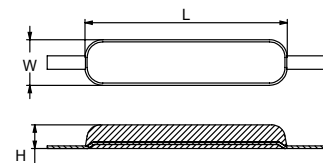
	PID	LB	KG		L	W	H	UPC
AL	JDH6GA	12.10	5.50	mm	500	100	40	6 28309 17389 0
ZN	JDH6GZ	28.60	13.00	in	19.7	3.94	1.6	6 28309 17216 9

Weld-on



	PID	LB	KG		L	W	W1	H	D	D1	UPC
AL	JDH45GBA	13.42	6.10	mm	352	113	16	65	445	16	6 28309 17370 8
ZN	JDH45GBZ	28.60	13.00	in	13.8	4.45	0.63	2.56	17.5	0.63	6 28309 23982 4

Combo



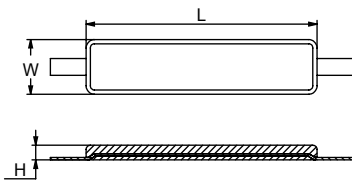
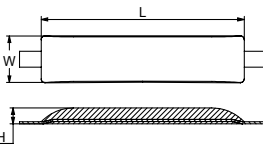
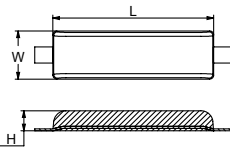
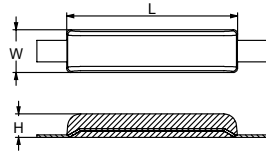
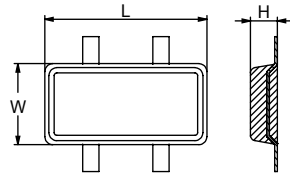
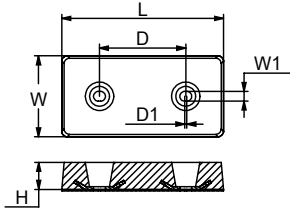
	PID	LB	KG		L	W	H	UPC
AL	JDZD140GA	12.50	5.70	mm	456	102	53	6 28309 24039 4
ZN	JDZD140GZ	30.80	14.00	in	18	4	2.08	6 28309 17306 7

Weld-on



BOLT HOLES CAN BE ADDED ON STRAPS AS REQUIRED

HULL anodes



	PID	LB	KG		L	W	W1	H	D	D1	UPC
AL	JDH23BA	12.1	5.5	mm	300	150	18	50	160	8	6 28309 17354 8
ZN	JDH23BZ	31.2	14.2	in	11.8	5.9	0.72	1.96	6.3	0.32	6 28309 17192 6

Bolt-on

	PID	LB	KG		L	W	H	UPC
ZN	JDH11GZ	31.90	14.50	mm	300	150	50	6 28309 17183 4
				in	11.8	5.9	2	

Weld-on

	PID	LB	KG		L	W	H	UPC
AL	JDGBZH01Z	33.00	15.00	mm	400	100	55	6 28309 17338 8
ZN	JDGBZH01A	13.44	6.40	in	15.75	3.94	2.17	6 28309 17178 0

Weld-on

	PID	LB	KG		L	W	H	UPC
AL	JDH5GA	14.10	6.40	mm	400	120	50	6 28309 17384 5
ZN	JDH5GZ	35.00	15.90	in	15.7	4.7	1.97	6 28309 17209 1

Weld-on

	PID	LB	KG		L	W	H	UPC
AL	JDDM155A	14.50	6.60	mm	520	120	40	6 28309 17334 0
ZN	JDDM155Z	36.60	16.60	in	15.75	4.7	1.6	6 28309 17166 7

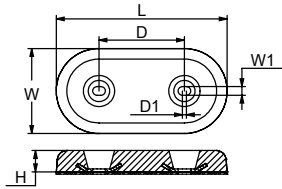
Weld-on

	PID	LB	KG		L	W	H	UPC
AL	JDZD170GA	15.62	7.10	mm	550	130	35	6 28309 24040 0
ZN	JDZD170GZ	37.40	17.00	in	21.7	5.12	1.38	6 28309 17307 4

Weld-on

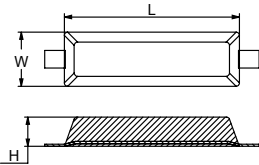
BOLT HOLES CAN BE ADDED ON STRAPS AS REQUIRED

HULL anodes



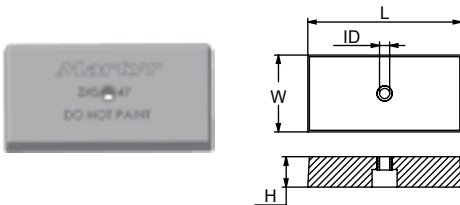
	PID	LB	KG		L	W	W1	H	D	D1	UPC
AL	JDH58GBA	15.20	6.90	mm	360	180	18	45	180	8	6 28309 17380 7
ZN	JDH58GBZ	37.80	17.20	in	14.1	7.1	0.72	1.77	7	0.32	6 28309 17381 4

Bolt-on



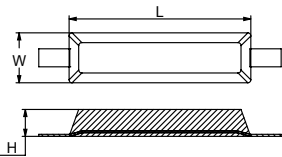
	PID	LB	KG		L	W	H	UPC
AL	JDH15GA	15.40	7.00	mm	400	124	67	6 28309 17346 3
ZN	JDH15GZ	37.80	17.20	in	15.7	4.9	2.64	6 28309 23973 2

Weld-on



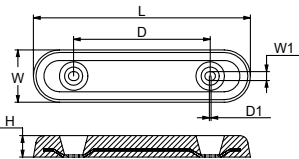
	PID	LB	KG		L	W	H	ID	UPC
AL	JDH37SA	15.40	7.00	mm	305	152	60	20	6 28309 17367 8
ZN	JDH37SZ	40.50	18.40	in	12	6	2.36	0.79	6 28309 23980 0

Bolt-on



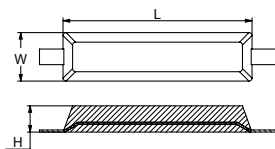
	PID	LB	KG		L	W	H	UPC
AL	JDH25SA	19.80	9.00	mm	450	124	67	6 28309 17359 3
ZN	JDH25SZ	42.90	19.50	in	17.7	4.88	2.64	6 28309 17197 1

Weld-on



	PID	LB	KG		L	W	W1	H	D	D1	UPC
AL	JDH54GBA	17.90	8.10	mm	540	130	22	53	340	4	6 28309 17376 0
ZN	JDH54GBZ	44.00	20.00	in	21.26	5.12	0.87	2.08	13.4	0.16	6 28309 17208 4

Bolt-on



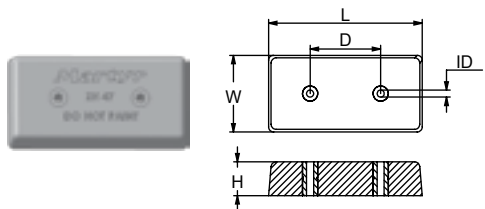
	PID	LB	KG		L	W	H	UPC
AL	JDH35GA	18.70	8.50	mm	480	124	67	6 28309 17363 0
ZN	JDH35GZ	45.50	20.70	in	18.9	4.88	2.64	6 28309 23979 4

Weld-on



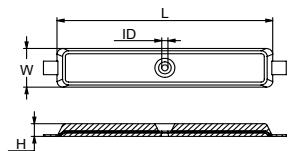
BOLT HOLES CAN BE ADDED ON STRAPS AS REQUIRED

HULL anodes



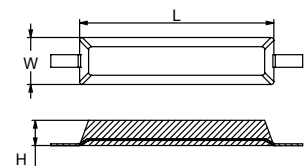
	PID	LB	KG		L	W	H	D	ID	UPC
AL	JDH40SBA	18.2	8.3	mm	305	152	67	140	14	6 28309 17369 2
ZN	JDH40SBZ	47.4	21.6	in	12	6	2.64	5.51	0.55	6 28309 23981 7

Bolt-on



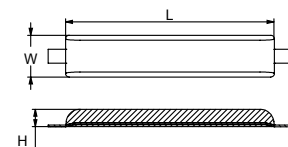
	PID	LB	KG		L	W	H	ID	UPC
AL	JDDM217A	20.90	9.50	mm	680	128	40	20	6 28309 17335 7
ZN	JDDM217Z	50.60	23.00	in	26.8	5	1.57	0.79	6 28309 17168 1

Combo



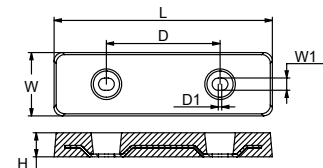
	PID	LB	KG		L	W	H	UPC
AL	JDH17GA	20.70	9.40	mm	510	123	66	6 28309 17347 0
ZN	JDH17GZ	51.50	23.40	in	20	4.84	2.6	6 28309 23974 9

Weld-on



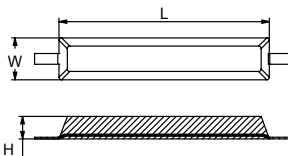
	PID	LB	KG		L	W	H	UPC
AL	JDH4GA	22.00	10.00	mm	600	120	50	6 28309 17203 9
ZN	JDH4GZ	52.40	23.80	in	23.6	4.7	1.97	6 28309 17374 6

Weld-on



	PID	LB	KG		L	W	W1	H	D	D1	UPC
AL	JDH59GBA	21.1	9.6	mm	500	145	28	55	260	8	6 28309 17382 1
ZN	JDH59GBZ	60.7	27.6	in	19.7	5.7	1.1	2.17	10.24	0.31	6 28309 23985 5

Bolt-on

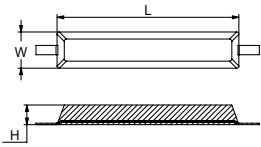


	PID	LB	KG		L	W	H	UPC
AL	JDMA3305SA	25.10	11.40	mm	620	124	67	6 28309 17394 4
ZN	JDMA3305SZ	63.10	28.70	in	24.4	4.88	2.64	6 28309 23988 6

Weld-on

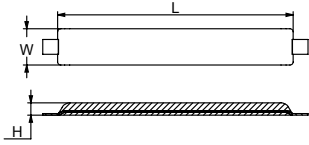
BOLT HOLES CAN BE ADDED ON STRAPS AS REQUIRED

HULL anodes



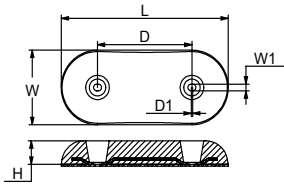
	PID	LB	KG		L	W	H	UPC
AL	JDH34GA	26.40	12.00	mm	650	124	67	6 28309 17362 3
ZN	JDH34GZ	64.00	29.10	in	25.6	4.88	2.64	6 28309 23978 7

Weld-on



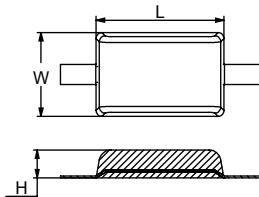
	PID	LB	KG		L	W	H	UPC
AL	JDDM105GA	26.40	12.00	mm	800	123	42	6 28309 17331 9
ZN	JDDM105GZ	65.10	29.60	in	31.5	4.84	1.65	6 28309 23970 1

Weld-on



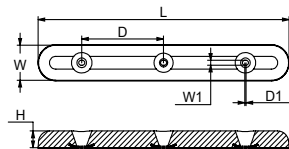
	PID	LB	KG		L	W	W1	H	D	D1	UPC
AL	JDH24GBA	25.30	11.50	mm	460	200	18	64	260	4	6 28309 17357 9
ZN	JDH24GBZ	64.90	29.50	in	18.1	7.87	0.71	2.52	10.25	0.16	6 28309 17194 0

Bolt-on



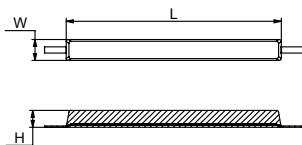
	PID	LB	KG		L	W	H	UPC
AL	JDH22GA	26.80	12.20	mm	320	210	70	6 28309 24018 9
ZN	JDH22GZ	67.10	30.50	in	12.6	8.27	2.76	6 28309 17191 9

Bolt-on



	PID	LB	KG		L	W	W1	H	D	D1	UPC
AL	JDH22GBA	26.80	12.20	mm	920	130	18	60	300	4	6 28309 17352 4
ZN	JDH22GBZ	83.60	38.00	in	36.2	5.1	0.71	2.36	11.81	0.16	6 28309 23975 6

Bolt-on

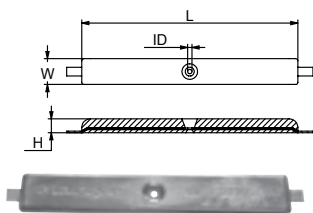


	PID	LB	KG		L	W	H	UPC
AL	JDE2GA	45.50	20.70	mm	1000	100	80	6 28309 24015 8
ZN	JDE2GZ	111.00	50.40	in	39.4	3.94	3.15	6 28309 17175 9

Weld-on

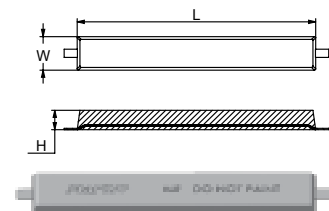
BOLT HOLES CAN BE ADDED ON STRAPS AS REQUIRED

HULL anodes



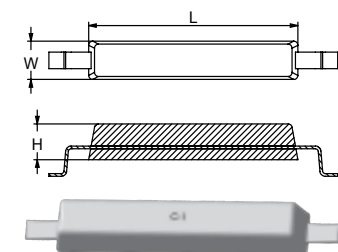
	PID	LB	KG		L	W	H	ID	UPC
AL	JD485GA	43.6	19.8	mm	1000	120	64	20	6 28309 17320 3
ZN	JD485GZ	110.0	50.0	in	39.4	4.7	2.5	0.79	6 28309 17145 2

Combo



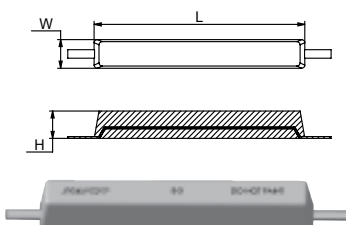
	PID	LB	KG		L	W	H	UPC
AL	JDH27GA	49.50	22.50	mm	920	130	75	6 28309 17361 6
ZN	JDH27GZ	124.80	56.70	in	36.2	5.12	2.95	6 28309 23977 0

Weld-on



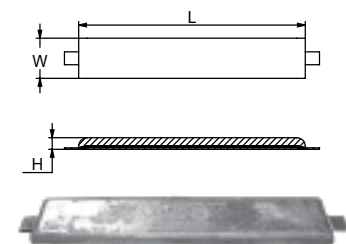
	PID	LB	KG		L	W	H	UPC
AL	JDC1GA	77.00	35.00	mm	760	139	130	6 28309 17328 9
ZN	JDC1GZ	189.00	86.00	in	30	5.5	5.12	6 28309 17158 2

Weld-on



	PID	LB	KG		L	W	H	UPC
AL	JDE3GA	93.70	42.60	mm	1000	135	130	6 28309 17337 1
ZN	JDE3GZ	242.00	110.00	in	39.4	5.31	5.12	6 28309 17176 6

Weld-on

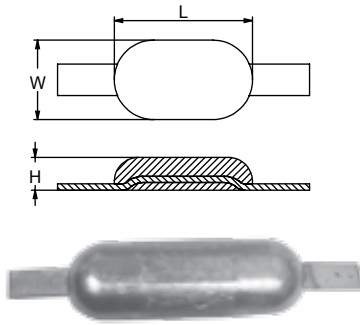


	PID	LB	KG		L	W	H	UPC
AL	JDH3GA	27.60	12.50	mm	800	140	40	6 28309 17368 5
ZN	JDH3GZ	67.00	30.40	in	31.50	5.5	1.57	6 28309 17200 8

Weld-on

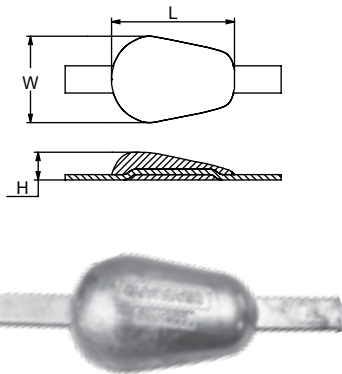
BOLT HOLES CAN BE ADDED ON STRAPS AS REQUIRED

HULL anodes



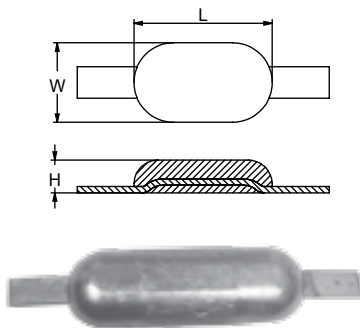
	PID	LB	KG		L	W	H	UPC
AL	SGSH506A	0.79	0.36	mm	115	60	17	6 28309 18246 5
MG	SGSH506M	0.66	0.30					6 28309 18247 2
ZN	SGSH506Z	1.32	0.60	in	4.5	2.37	0.66	6 28309 18245 8
AL	SGSH507A	1.15	0.52	mm	110	63	26	6 28309 18249 6
MG	SGSH507M	0.88	0.40					6 28309 18250 2
ZN	SGSH507Z	2.20	1.00	in	4.33	2.48	1	6 28309 18248 9
AL	SGSH508A	2.00	0.91	mm	200	70	26	6 28309 18252 6
MG	SGSH508M	1.50	0.68					6 28309 18253 3
ZN	SGSH508Z	3.97	1.80	in	7.87	2.76	1.02	6 28309 18251 9
AL	SGSH509A	2.43	1.10	mm	215	70	29	6 28309 18255 7
MG	SGSH509M	1.72	0.78					6 28309 18256 4
ZN	SGSH509Z	4.85	2.20	in	8.46	2.75	1.14	6 28309 18254 0
AL	SGSH510A	3.09	1.40	mm	200	90	35	6 28309 18258 8
MG	SGSH510M	2.20	1.00					6 28309 18259 5
ZN	SGSH510Z	7.54	3.00	in	7.87	3.54	1.38	6 28309 18257 1

Weld-on



	PID	LB	KG		L	W	H	UPC
AL	SGSH100A	1.15	0.52	mm	118	80	26	6 28309 18220 5
MG	SGSH100M	0.88	0.40					6 28309 18232 8
ZN	SGSH100Z	2.20	1.00	in	4.65	3.15	1	6 28309 18208 3
AL	SGSH101A	Please contact us for more info		mm	165	100	40	Please contact us for more info
MG	SGSH101M			in	6.49	3.94	1.67	
ZN	SGSH101Z	6.61	3.00					
AL	SGSH159A	1.92	0.87	mm	140	90	40	6 28309 18221 2
MG	SGSH159M	1.43	0.65					6 28309 18233 5
ZN	SGSH159Z	3.97	1.80	in	5.50	3.54	1.57	6 28309 18209 0

Weld-on

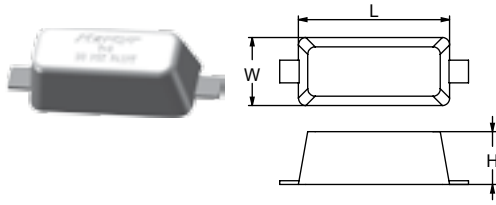


	PID	LB	KG		L	W	H	UPC
AL	SGSH16A	4.94	2.24	mm	300	80	40	6 28309 22624 4
MG	SGSH16M	3.53	1.60					6 28309 22844 6
ZN	SGSH16Z	11.22	5.09	in	11.8	3.15	1.57	6 28309 22293 2
AL	SGSH25A	8.07	3.66	mm	320	147	40	6 28309 22625 1
MG	SGSH25M	5.51	2.50					6 28309 22845 3
ZN	SGSH25Z	19.38	8.79	in	12.6	5.79	1.57	6 28309 22294 9

Weld-on

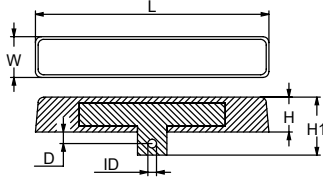
BOLT HOLES CAN BE ADDED ON STRAPS AS REQUIRED

BALLAST TANK anodes



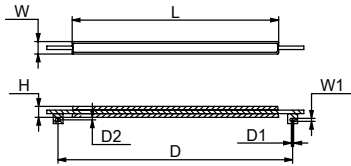
	PID	LB	KG		L	W	H	UPC
AL	JDZT8GA	6.60	3.00	mm	200	90	70	6 28309 24041 7
ZN	JDZT8GZ	16.50	7.50	in	7.88	3.5	2.8	6 28309 24007 3

Weld-on



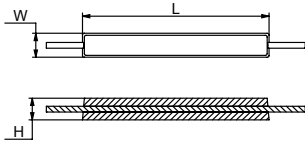
	PID	LB	KG		L	W	H	H1	D	ID	UPC
AL	JDT9GA	9.0	4.1	mm	400	70	60	100	20	15	6 28309 24038 7
ZN	JDT9GZ	22.0	10.0	in	15.7	2.75	2.36	3.94	0.79	0.59	6 28309 17302 9

Combo



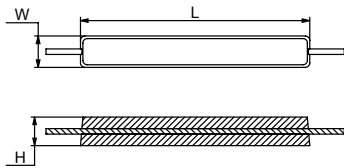
	PID	LB	KG		L	W	H	H1	D	D1	UPC
AL	JDI13GA	11.00	5.0	mm	820	50	12	43	93	9	6 28309 17392 0
ZN	JDI13GZ	25.33	11.5	in	32	2	0.5	1.7	36.7	0.35	6 28309 23986 2

Combo



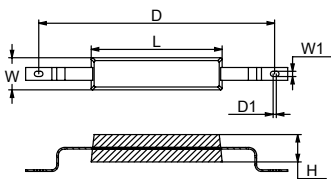
	PID	LB	KG		L	W	H	UPC
AL	JDT13GA	12.30	5.60	mm	500	60	60	6 28309 17414 9
ZN	JDT13GZ	28.60	13.00	in	19.7	2.36	2.36	6 28309 24000 4

Weld-on



	PID	LB	KG		L	W	H	UPC
AL	JDGBZT01A	14.50	6.60	mm	516	69	63	6 28309 17340 1
ZN	JDGBZT01Z	34.40	15.60	in	20.3	2.72	2.48	6 28309 17181 0

Weld-on



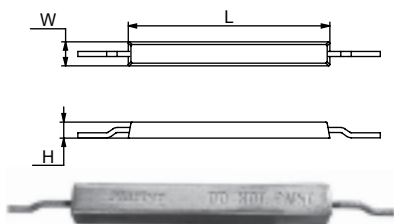
	PID	LB	KG		L	W	W1	H	D	D1	UPC
AL	JDT12GA	19.8	9.0	mm	400	100	16	85	720	10	6 28309 17413 2
ZN	JDT12GZ	48.4	22.0	in	15.7	3.94	0.63	3.35	28.3	0.4	6 28309 23999 2

Combo



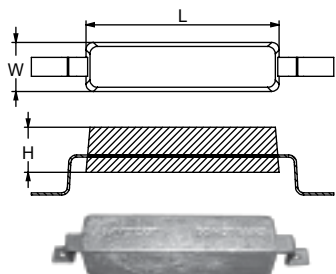
BOLT HOLES CAN BE ADDED ON STRAPS AS REQUIRED

BALLAST TANK anodes



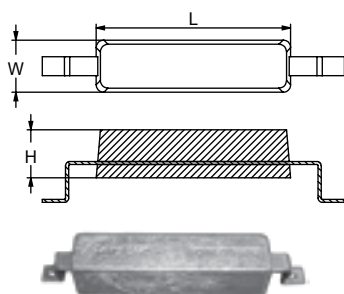
	PID	LB	KG		L	W	H	UPC
AL	JDT237A	22	10	mm	800	74	64	6 28309 24008 0
ZN	JDT237Z	55	25	in	32	3	2.5	6 28309 23966 4

Weld-on



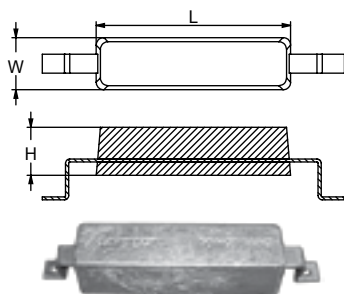
	PID	LB	KG		L	W	H	UPC
AL	JDT3GA	44	20	mm	500	130	120	6 28309 17425 5
ZN	JDT3GZ	108.5	49.3	in	19.7	5.2	4.7	6 28309 24004 2

Combo



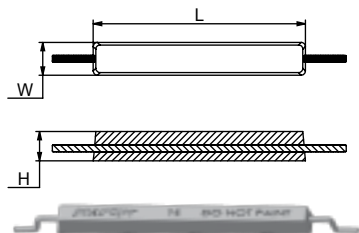
	PID	LB	KG		L	W	H	UPC
AL	JDT1GA	50.6	23	mm	500	135	130	6 28309 17422 4
ZN	JDT1GZ	131	59.5	in	19.7	5.3	5.1	6 28309 24002 8

Combo



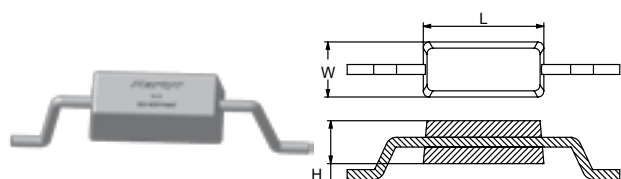
	PID	LB	KG		L	W	H	UPC
AL	JDI17GA	176	80	mm	700	83	83	6 28309 17393 7
ZN	JDI17GZ	449	204	in	27.6	3.27	3.27	6 28309 23987 9

Combo



	PID	LB	KG		L	W	H	UPC
AL	JDT14GA	16.3	7.4	mm	500	70	70	6 28309 17416 3
ZN	JDT14GZ	38.8	17.6	in	19.7	2.76	2.76	6 28309 17294 7

Weld-on

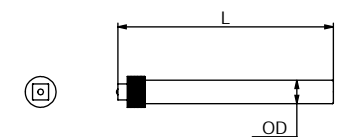
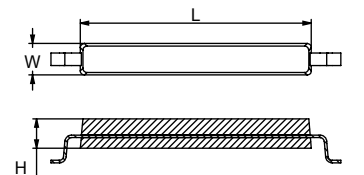
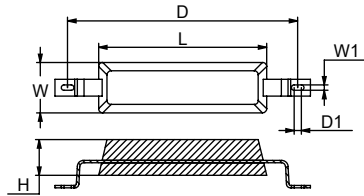
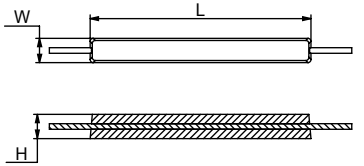
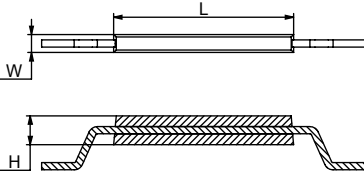
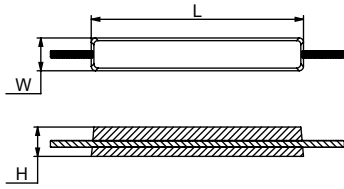


	PID	LB	KG		L	W	H	UPC
AL	JDT11GA	8.1	3.7	mm	200	90	70	6 28309 17412 5
ZN	JDT11GZ	18.7	8.5	in	7.9	3.54	2.76	6 28309 17293 0

Weld-on

BOLT HOLES CAN BE ADDED ON STRAPS AS REQUIRED

BALLAST TANK anodes



	PID	LB	KG		L	W	H	UPC
AL	JDT14GAF	16.3	7.4	mm	500	70	70	6 28309 17417 0
ZN	JDT14GZF	39.2	17.8	in	19.7	2.76	2.76	6 28309 17295 4

Bolt-on

	PID	LB	KG		L	W	H	UPC
AL	JDT15GA	36.3	16.5	mm	1000	80	80	6 28309 24037 0
ZN	JDT15GZ	90.2	41	in	39.4	3.15	3.15	6 28309 17296 1

Weld-on

	PID	LB	KG		L	W	H	UPC
AL	JDT16GA	11.7	5.3	mm	730	80	80	6 28309 17418 7
ZN	JDT16GZ	26.4	12	in	28.7	3.15	3.15	6 28309 24001 1

Weld-on

	PID	LB	KG		L	W	W1	H	D	D1	UPC
AL	JDT19GA	22.4	10.2	mm	400	120	13	85	548	17	6 28309 17420 0
ZN	JDT19GZ	59	26.8	in	15.7	4.72	0.5	3.35	21.6	0.67	6 28309 17421 7

Combo

	PID	LB	KG		L	W	H	UPC
AL	JDT22GA	16.9	7.7	mm	550	75	70	6 28309 17424 8
ZN	JDT22GZ	40.9	18.6	in	21.7	2.95	2.76	6 28309 24003 5

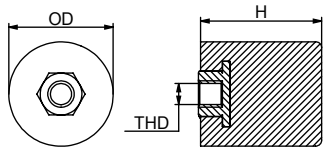
Weld-on

HEAT EXCHANGER anodes

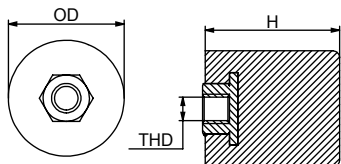
	PID	LB	KG		L	OD	UPC
ZN	JDROD25DZ	1.78	0.81	mm	228	25	6 28309 17245 9
				in	9	1	

BOLT HOLES CAN BE ADDED ON STRAPS AS REQUIRED

HEAT EXCHANGER *anodes*

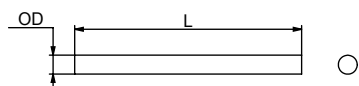


	PID	LB	KG		L	OD	THD	UPC
ZN	JDROD69DZ	4.50	2.04	mm	80	69	M16	6 28309 17277 0
				in	3.15	2.7		



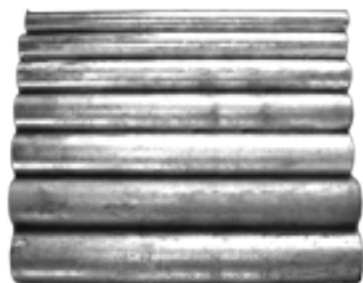
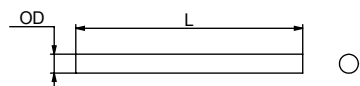
	PID	LB	KG		L	OD	THD	UPC
ZN	JDROD100DZ	9.57	4.35	mm	80	100	M16	6 28309 17227 5
				in	3.15	4		

ROD STOCK *anodes*



	PID	LB	KG		L	OD	UPC
AL	JDROD25A	1.00	0.45	mm	300	25	6 28309 17434 7
ZN	JDROD25Z	2.42	1.10	in	11.81	1	6 28309 17247 3
AL	JDROD30A	1.34	0.61	mm	300	30	6 28309 17397 5
ZN	JDROD30Z	3.30	1.50	in	11.81	11.81	6 28309 17254 1
AL	JDROD40A	2.40	1.09	mm	300	40	6 28309 17399 9
ZN	JDROD40Z	5.95	2.70	in	11.81	1.5	6 28309 17262 6
AL	JDROD45A	3.04	1.38	mm	300	45	6 28309 17400 2
ZN	JDROD45Z	7.49	3.40	in	11.81	1.75	6 28309 17264 0
AL	JDROD50A	3.74	1.70	mm	300	50	6 28309 17401 9
ZN	JDROD50Z	9.24	4.20	in	11.81	2	6 28309 17269 5
AL	JDROD55A	4.54	2.06	mm	300	55	6 28309 17402 6
ZN	JDROD55Z	11.23	5.10	in	11.81	2.25	6 28309 17272 5
AL	JDROD60A	5.44	2.47	mm	300	60	6 28309 17403 3
ZN	JDROD60Z	13.44	6.10	in	11.81	2.37	6 28309 17275 6
AL	JDROD65A	6.32	2.87	mm	300	65	6 28309 17404 0
ZN	JDROD65Z	15.64	7.10	in	11.81	2.5	6 28309 17276 3
AL	JDROD70A	7.40	3.36	mm	300	70	6 28309 17405 7
ZN	JDROD70Z	18.28	8.30	in	11.81	2.75	6 28309 17279 4
AL	JDROD75A	8.48	3.85	mm	300	75	6 28309 17406 4
ZN	JDROD75Z	20.90	9.50	in	11.81	3	6 28309 17280 0
AL	JDROD80Z	9.71	4.41	mm	300	80	6 28309 17407 1
ZN	JDROD80Z	24.00	10.90	in	11.81	3.12	6 28309 17281 7
AL	JDROD85A	10.97	4.98	mm	300	85	6 28309 17408 8
ZN	JDROD85Z	27.10	12.30	in	11.81	3.37	6 28309 17284 8
AL	JDROD90A	12.22	5.55	mm	300	90	6 28309 17409 5
ZN	JDROD90A	30.18	13.70	in	11.81	3.5	6 28309 17287 9

ROD STOCK anodes



	PID	LB	KG		L	OD	UPC
AL	JDROD95A	13.63	6.19	mm	300	95	6 28309 17410 1
ZN	JDROD95Z	33.70	15.30	in	11.81	3.75	6 28309 17288 6
AL	JDROD100A	15.15	6.88	mm	300	100	6 28309 17631 0
ZN	JDROD100Z	37.44	17.00	in	11.81	4	6 28309 17228 2
AL	JDROD105A	16.67	7.57	mm	300	105	6 28309 17395 1
ZN	JDROD105Z	41.20	18.70	in	11.81	4.12	6 28309 17229 9
AL	JDROD110A	18.28	8.30	mm	300	110	6 28309 17586 3
ZN	JDROD110Z	45.15	20.5	in	11.81	4.37	6 28309 17230 5
AL	JDROD115A	20.00	9.07	mm	300	115	6 28309 17396 8
ZN	JDROD115Z	49.34	22.40	in	11.81	4.5	6 28309 17231 2